

# intuVision VA

**Using intuVision® Video Analytics with exacqVision**



Copyright intuVision Inc. 2006-2020  
All rights reserved.

## Table of Contents

---

Introduction	3
Adding the exacqVision Server to intuVision VA	4
Adding Cameras from VMS	5
Output Triggers and Event Linking	6
exacqVision Soft Trigger Actions	7
PTZ with exacqVision Cameras	9

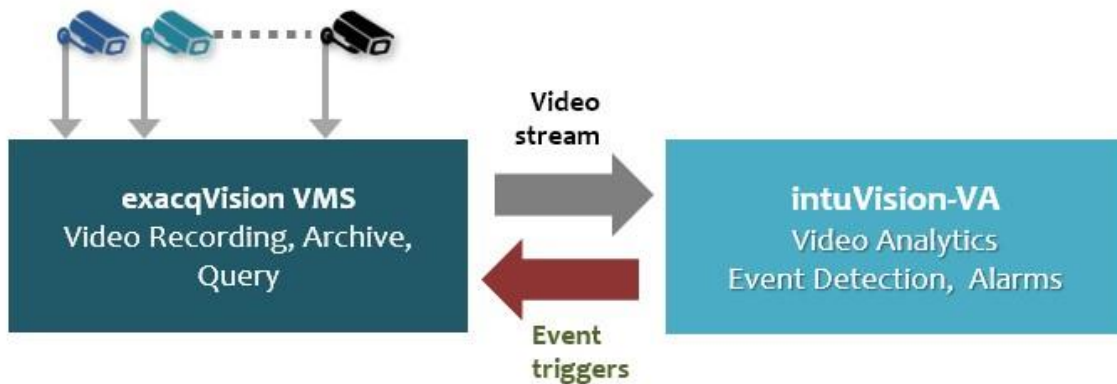


## Introduction

intuVision VA has a comprehensive integration with exacqVision Video Management Systems and is certified to run on the same hardware, either on-board exacqVision A-series and Z-series units or 3<sup>rd</sup> party built servers. Capable of supporting distributed architectures, intuVision VA will easily fit into any existing video surveillance system or new site designs.

The integration supports:

- access all cameras on exacqVision system with the click of a button,
- live video feed ingestion, reducing camera and network load,
- archived video linking –
  - enabling review of Exacq archived video in intuVision
  - post-processing of Exacq archived video – simply by selecting the camera and time periods
  - and face enrollment (for intuVision VA Face) from Exacq archived video
- video PTZ –
  - selecting new preset locations,
  - pausing video during PTZ actions,
  - PTZ to preset location upon event detection,
- exacqVision triggers upon intuVision VA event detection, including:
  - PTZ to preset location,
  - event triggered video recording, to reduce storage requirements,
  - and generic soft triggers, for flexibility with all exacqVision event trigger options.



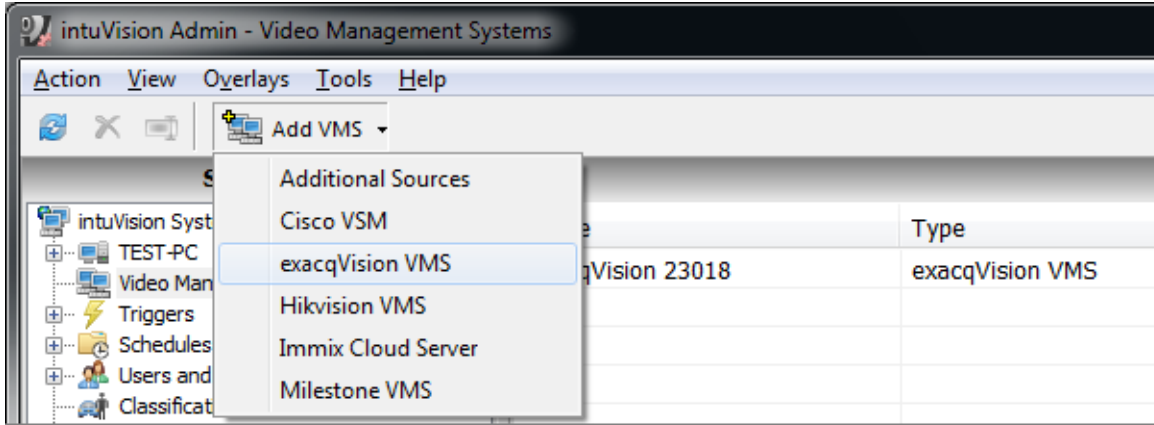
**This document is a system setup guide for the intuVision VA and exacqVision integrated operation. The full intuVision VA user guide, including video analytics configuration instructions, can be found in the intuVision Admin or Review Applications help documentation, by opening Help>View Help.**

## Adding the exacqVision Server to intuVision VA

For using intuVision VA with the exacqVision VMS they need to be on the same network. To add the exacqVision server to intuVision VA:

1. In the intuVision VA Admin application system tree right click on **Video Management System** select **New VMS**, and choose **exacqVision VMS**.

Alternatively, click **Add VMS** in the tool bar of intuVision VA Admin application main window or the Video Management System window, and select **exacqVision VMS**.



2. Enter a name for the exacqVision VMS in the window that appears. Then, complete the **Properties** fields for that exacqVision server.

- a. Domain Name
- b. Port
- c. User Name
- d. Password

Property	Value
Domain Name	10.0.0.217
Port	22609
User Name	admin
Password	*****

3. Click **Validate** to ensure the completed properties are valid, and click **Apply** to save the information entered.

After the exacqVision system is added to intuVision VA, all cameras on the exacqVision VMS will appear in the Video Source window of intuVision VA under “exacqVision Cameras”. The cameras will have the same camera names used in the exacqVision system.

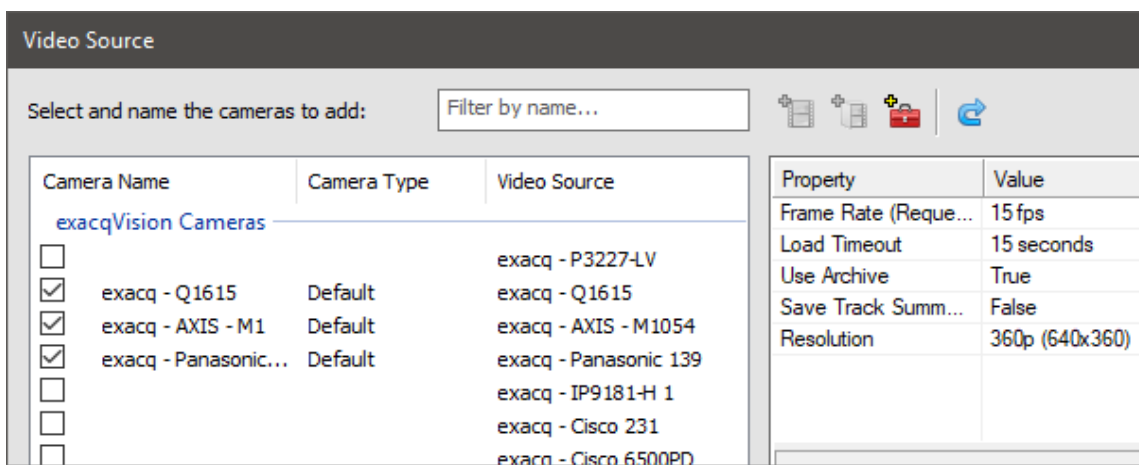
At this point the cameras that need the analytics processing can be selected one-by-one to add to intuVision VA or in bulk from the VMS using the **Add Cameras** button in the tool bar of intuVision VA.

## Adding Cameras from VM

Cameras (for analytics processing) can be added to intuVision VA either by selecting from the **exacqVision Cameras** list or in bulk from the VMS. This can be done either through the Video Management System window with an applied VMS or through the “Add Cameras” menu.

To add VMS cameras:

1. Right click on the computer name, and select **Add exacqVision Cameras...** The Video Source window appears.
  - Note:** Alternatively, select **Add Cameras** in the Video Management System window.
2. In the Video Source Window, select the cameras to add analytics. The camera name from the exacqVision system is used by default, but can be changed if desired.
  - Note:** Hovering the mouse over a camera will give a pop-up of the camera view, to verify the selected camera.
3. Choose the properties for the selected cameras. Properties selected will be added to all checked-off cameras, but can be modified as needed after the cameras are added.
  - **Processor Machine** – needed for distributed systems only - when adding the cameras through the Video Management System window, this option will enables selecting the analytics processing computer for the cameras. **Automatic** evenly distributes the cameras between the processor machines.
  - To link the **Archive**, select **True** for **Use Archive**.
  - To **Enable PTZ**, change the drop-down to **True**; select the **Home Position**; and add the **Auto Return** duration.
  - Enabling **Save Track Summaries** on the camera settings allows searching object tracks, and generating heatmaps.
  - Resolution (and all settings) can be changed one-by-one on each camera’s page. Default of 360p is recommended for most scenes.



## Output Triggers and Event Linking

intuVision VA has the ability to send output notifications to select 3<sup>rd</sup> Party devices and systems upon analytics event detections. Actions triggered by intuVision VA alarms include exacqVision event recording, raising a soft trigger, and camera PTZ.

For event recording, no additional action on the exacqVision side is required as long as the camera of interest is connected. For raising a soft trigger, a soft trigger must be added in exacqVision system before an intuVision VA event can be linked to it.

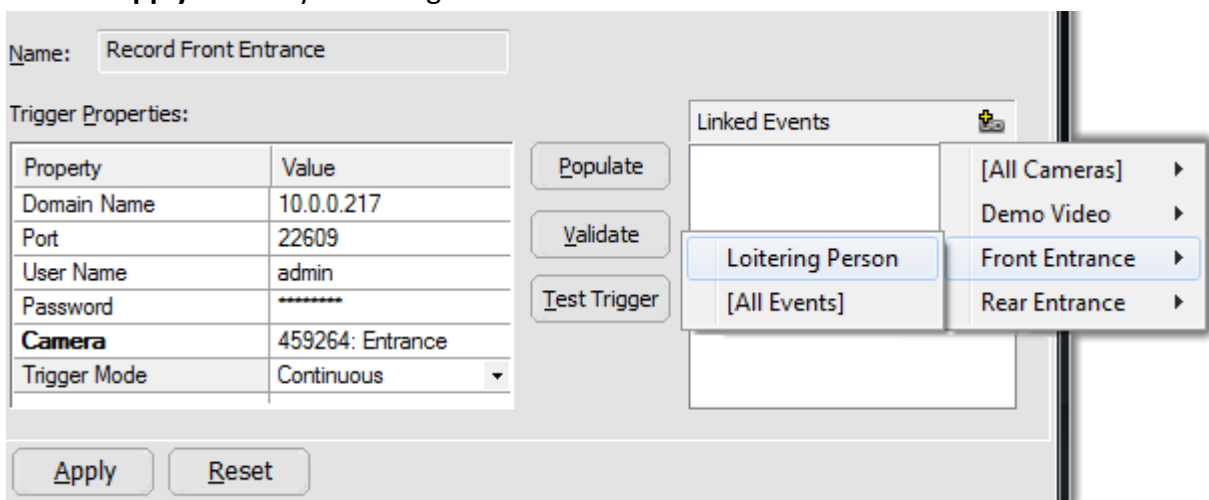
To set up a new trigger in intuVision VA:

1. Expand **Triggers** in the system tree and right click on **Output Triggers**. Select **New Trigger** and navigate through the menu to the relevant trigger, options include:
  - a. **Record Video Clip**
  - b. **Raise Soft Trigger** (this requires that a trigger is already added in the exacqVision system)
2. Enter a trigger name in the window that appears.
3. Click on the newly created trigger in the trigger window to edit the device that the trigger will be sent to.
4. Enter the **Domain Name**, **User Name**, and **Password** and click **Populate**. This will populate the drop-down menus with relevant information.
5. Complete the drop-down menus.
6. Click **Validate** to ensure that the device has been correctly set up.

**Note:** **Test** can be used to test your new trigger.

To link an intuVision VA event to an output trigger:

1. Ensure that the trigger is selected in the trigger window.
2. Under **Linked Events**, click on the new events icon, and navigate through the event list to the desired event.
3. Click **Apply** to save your changes.



### exacqVision Soft Trigger Actions

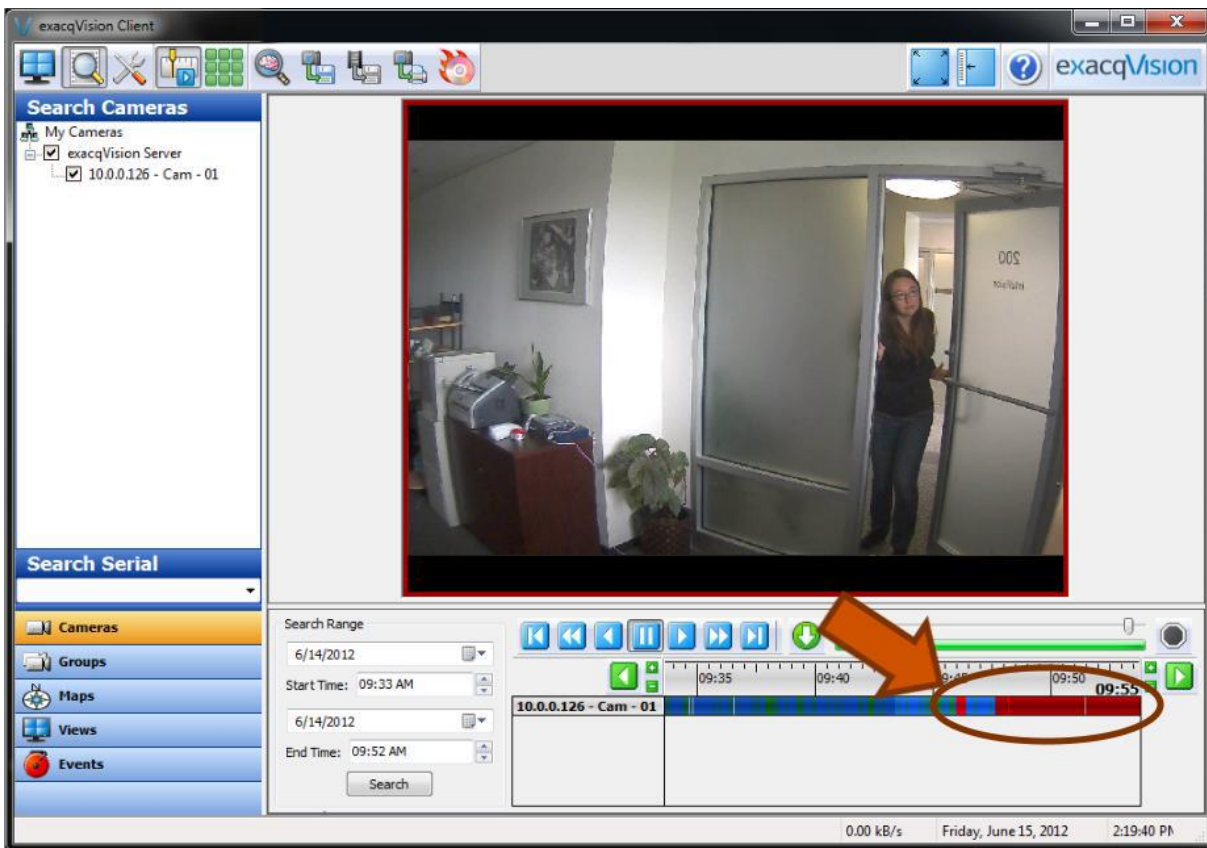
intuVision VA supports a range of compatible soft trigger actions within exacqVision – sending “Soft Triggers” to exacqVision upon event detection- to meet a wide range of requirements.

#### Event Database

A soft trigger can be sent to the exacqVision Client Event Database, requiring confirmation, to ensure acknowledgement of the event alarm to be reviewed within the exacqVision system.

**Record Video or Audio** intuVision “Record Video” trigger can be used as a shortcut, but in some cases custom “Record Video” actions are desired. One example is if event detection on one camera should trigger video recording for another camera– for instance if analytics processing is being done on a thermal camera, but security staff wishes to review video in standard color from another camera viewing the same area.

Image below shows how video recorded from intuVision triggered “Record Video” actions would appear in the Exacq video search page.



**Output Trigger** intuVision triggers can be sent to any other system with which exacqVision is integrated, including Access Control and other 3<sup>rd</sup> Party devices.

### **Notify (Email)**

Trigger is used to send e-mail notifications according to the profile created in exacqVision. While intuVision VA contains direct email notifications as well, this trigger makes it possible to send the email notifications upon intuVision VA detections through exacqVision system.

### **PTZ Preset**

Trigger enables a PTZ action to be configured through soft triggers and the exacqVision PTZ Preset Action. Alternatively, intuVision VA has a custom trigger for camera PTZ upon event detections.

### **Auto Export**

Trigger can be used to activate one of the configurable auto export options upon intuVision event detections, such as automatically exporting video to a CD upon event occurrence for documenting evidence.

### **Video Wall View Change**

Trigger is used to automatically change the exacqVision Client Video Wall to a chosen view upon an intuVision event detection; for example, to the camera on which the event was detected, or another camera (in the case of intuVision VA processing on thermal video, or a high resolution overview camera, etc), or an overview showing all cameras.





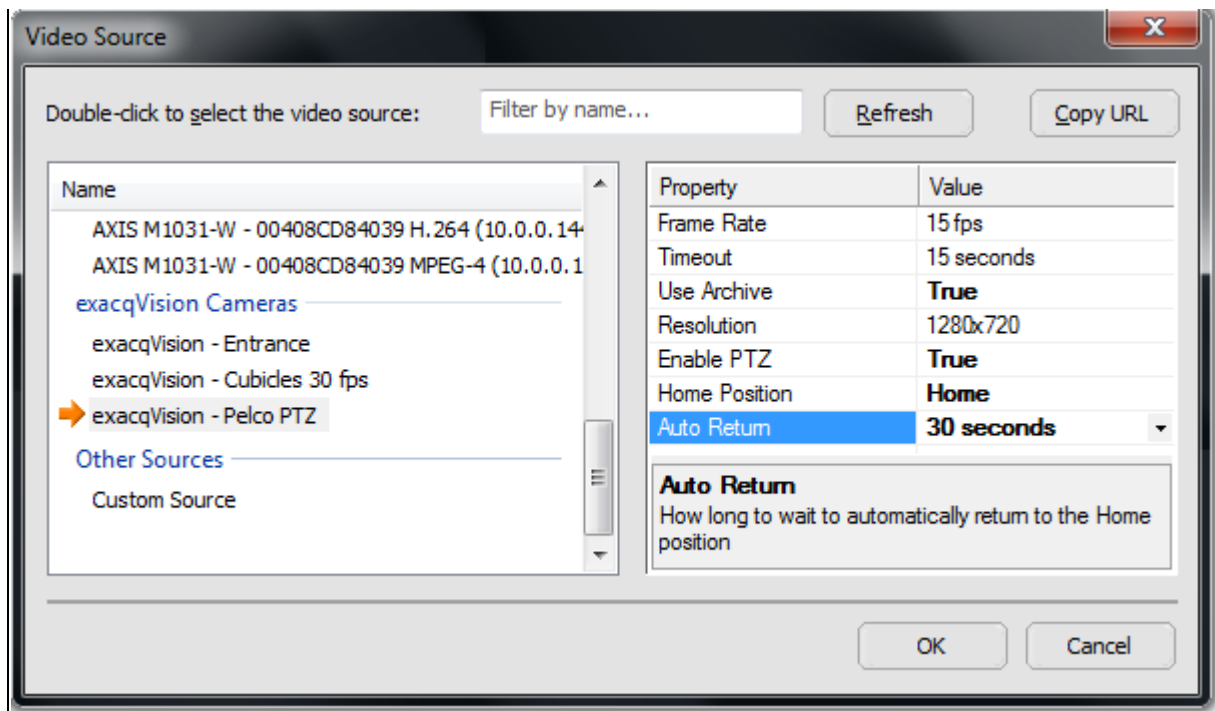
## PTZ with exacqVision Cameras

PTZ (Pan, Tilt, Zoom) enabled cameras added to intuVision VA through an exacqVision system can be controlled directly from intuVision VA, or via Output PTZ Triggers as described in the Soft Trigger Actions.

To add a PTZ compatible camera:

1. Ensure that the VMS has been added to intuVision VA.
2. Right click on the computer name in the system tree and select **Add Cameras/Video Stream**.
3. Double click on the desired camera, the properties window populates with the relevant properties.
4. To link archiving, select true for **Use Archive**.
5. To enable PTZ, select true for **Enable PTZ**. If needed, choose the **Home Position**. This auto populates with home positions specified in the VMS. Select the time interval for **Auto Return**.
6. Click **OK** to save your changes.

**Note:** A preset position can also be added through intuVision VA. After adding the camera as described above, click on the new camera in the system tree and use the controls depicted on the next page to navigate to the desired camera location. Click on the **Video Source** tab, use the **Home Position** drop down menu, and click **[Add preset]**. You will be prompted to name the new preset location.



To use PTZ controls in intuVision VA:

1. In the intuVision Admin application, click on the camera name in the system tree  
**Note:** ensure **Select Zone** and **Select Object** are both deselected in the toolbar.
2. Then in the intuVision Review application, simply hover over a live video feed until the PTZ controls appear as shown in the scene snapshot below.



3. Use the blue arrows to pan and tilt the camera, use the + / - to zoom in or out, and use the home icon to return home. The icons will appear when you hover over each region, as depicted below

**Note:** When the camera PTZ home position is set using the intuVision system intuVision VA will pause analytics processing when the camera is moving, and will resume processing when the camera returns to home position.

## Contact info and Support

**intuVision Support** (Technical Support, Customer Service, Sales, and more)

<https://intuvisiontech.com/support/>

10 Tower Office Park Suite 419, Woburn, MA 01801 | Tel: (781) 497-1015 | Fax: (781) 497-1014 Support: (781) 497-2929 |

© Copyright 2006-2020 intuVision, Inc. All Rights Reserved

**Exacq Support** (Technical Support, Training tools, and more)

<https://exacq.com/support/>