

Contents

1 Introduction 2

2 Requirements..... 2

3 Additional exacqVision Virtual Servers 3

4 Installation 3

5 exacqVision Web Service 5

6 Upgrading Hardware..... 6

7 Configuration 8

8 Troubleshooting and Monitoring..... 10

9 Configuring Virtual Disk Storage 12

10 Configuring Additional Networking 32

11 Performance Monitoring 35

12 Upgrading exacqVision to a New Release..... 39

13 Pre-Migration Data Sheet 45



1 Introduction

The exacqVision Virtual Appliance server contains a Linux-based installation of exacqVision server in a single, compressed, transportable file that can easily be deployed on a VMware host server in minutes. The server runs unlicensed with one camera, and additional cameras can be added with an Enterprise license.

This document is written for a VMware administrator installing the exacqVision virtual appliance in an existing VMware cluster. It is assumed that the VMware host has been properly installed and configured with host hardware certified by VMware. Hardware can be validated at the [VMware Compatibility Guide](http://www.vmware.com/resources/compatibility) website.

2 Requirements

Before deployment, system administrators should calculate video storage space and networking requirements using the configuration calculator found at: <https://exacq.com/config/>.

Minimum Provisions

- VMware vSphere 4i or 5i ESX Hypervisor. ExacqVisionVirtual14 require VSphere 5.1 Update 2 or higher.
- 2 virtual cores with a reservation of 1000MHz
- 2GB virtual RAM
- disk space - 235GB (200GB allocated to video Storage)
- Disk I/O capacity of 125% the storage data rate calculated at <https://exacq.com/config/>.
- Sufficient network bandwidth to support incoming video streams
- One EVES-01 exacqVision Enterprise Server license
- VCenter Server is required if deploying on vSphere 6.x

Recommended Provisions

- 4 virtual cores with a reservation of 6000MHz
- 6GB of virtual RAM
- Additional video storage space to meet video storage requirements
- Disk I/O capacity of 150% the storage data rate calculated here: <https://exacq.com/config/>
- Two independent subnets for cameras and exacqVision Client connections (four maximum)

The exacqVision Server can access virtual disks up to 16TB in Size. (*Note vSphere version* prior to 5.5 can only access 2TB virtual disk)

The server supports Logical Volume Management (LVMs) using virtual disks, which allows presentation of volumes greater than 2TB to the system. See section 9, "Configuring Virtual Disk Storage," for more information about managing virtual storage on the appliance.

3 Additional exacqVision Virtual Servers

You can install multiple exacqVision Virtual appliances on the same host of the same vSphere cluster using unique guest names.

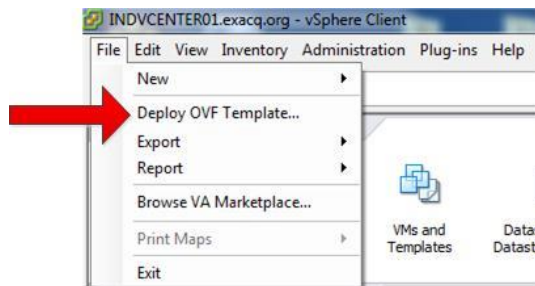
Each exacqVision Virtual Appliance must have a separate exacqVision Server license. Camera licenses are generated based on the MAC address of each guest and cannot be combined or duplicated, even if both exacqVision Virtual servers reside on the same host.

Each exacqVision Virtual Appliance comes with the exacqVision Client and the exacqVision Web Service installed. Because of limited video display capabilities of virtualized appliances, exacqVision client is recommended only for diagnostic activities when used with exacqVision Virtual appliances (that is, it is not recommended for live video display).

4 Installation

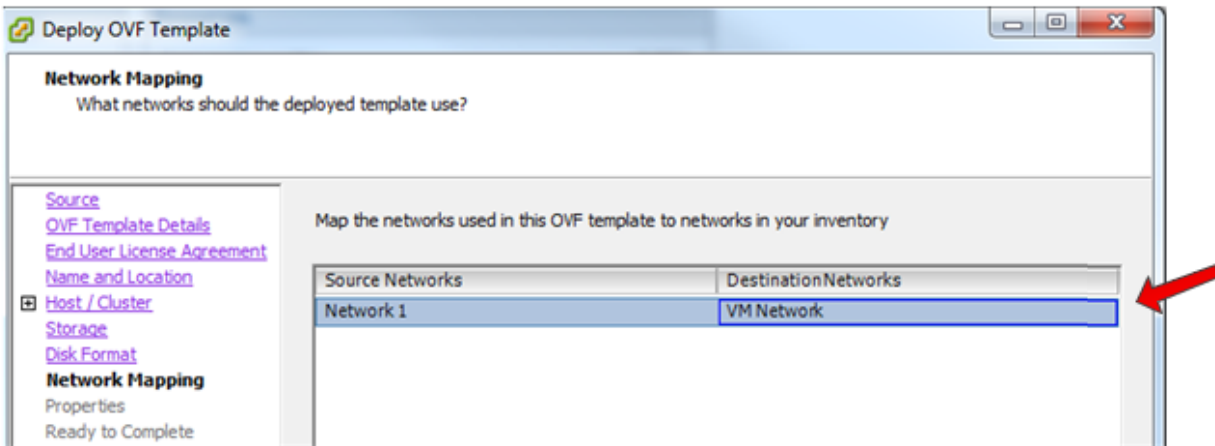
The exacqVision Virtual server can be downloaded from the [Exacq Technologies Website](#) or through the VA Marketplace accessible from the File menu in the vSphere Client. The downloaded file can be saved to any computer that has the vSphere client installed and which has an account with permission to deploy new virtual machines on the targeted host. To install the exacqVision Virtual server, complete the following steps:

1. Open the vSphere Client and connect to your vCenter management server. If you do not have a vCenter server, connect directly to your host.
2. From the File menu, choose Deploy OVF Template... . This opens the Deploy OVF Template wizard.



3. Click the Browse button and navigate to the downloaded exacqVision Virtual server. Click Next.
4. Click Next on OVF Template Details. Note the disk-size requirements.
5. Read and accept the license agreement. Click Next.
6. Rename the server if desired. Click Next.
7. Select the datastore you want to deploy to. Click Next.
8. Choose the type of provisioning. If you will modify the storage disk, choose thin provisioning to reduce the installation time.

- On the Network Mapping screen under Destination Networks, choose the network containing the exacqVision client.



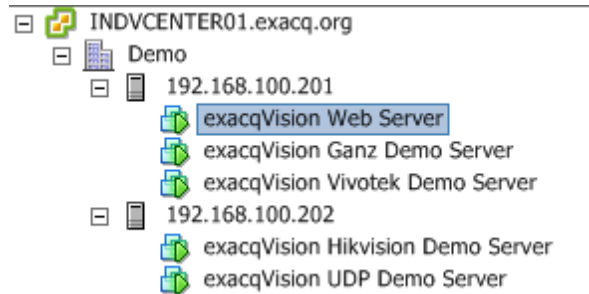
- Under Networking Properties, enter the Gateway, DNS, IP Address, and Netmask. If you prefer to use DHCP to populate these values, click Next. This information can easily be changed from the web interface after deployment.

- Under Ready to Complete, review the Deployment settings to make sure the information is correct. Select Power On After Deployment if you want to start your server immediately (if you do not need to modify the default CPU, RAM, NIC, or disk settings).
- Click Finish.

You can watch the progress of the deployment in the Recent Tasks screen.

5 exacqVision Web Service

ExacqVision Web Service is enabled on exacqVision Virtual Appliance by default. The Web Service requires increasing the number of CPU cores in the appliance to six and increasing the memory to 6GB. It is recommended that you install a second exacqVision Virtual Appliance specifically for Web Service to allow better VMware DRS load balancing.



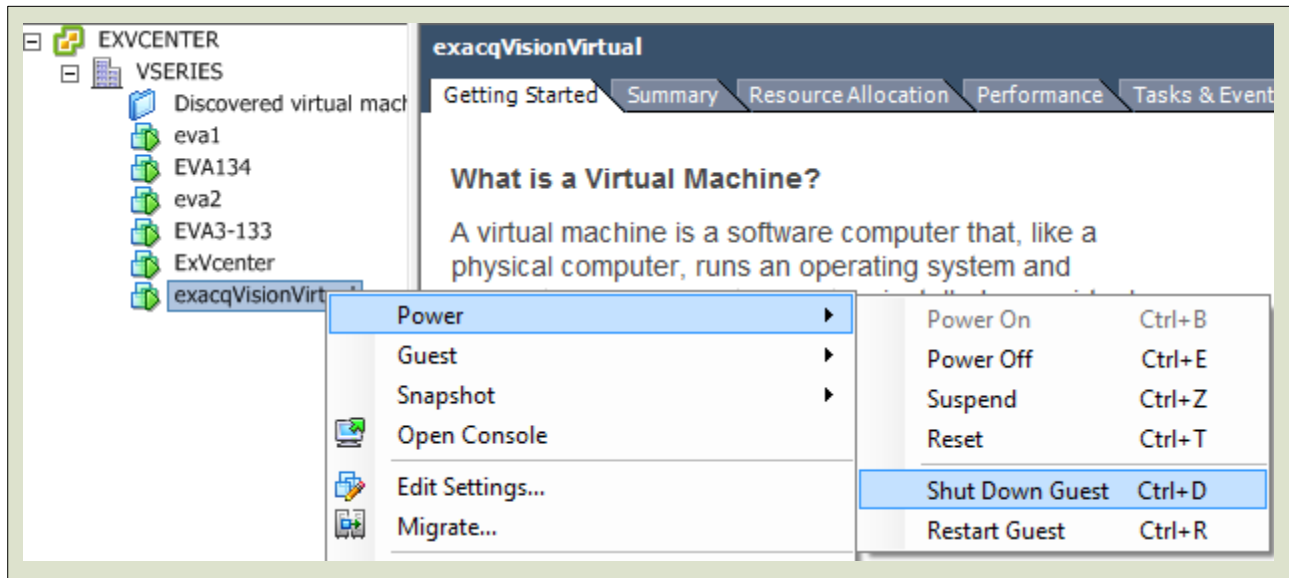
Access the web interface by opening a browser with the server's IP address and port 8080. If the server will be used exclusively for the Web Service, from the Gnome GUI open the Exacq Script desktop icon and unload the exacqVision server.

6 Upgrading Hardware

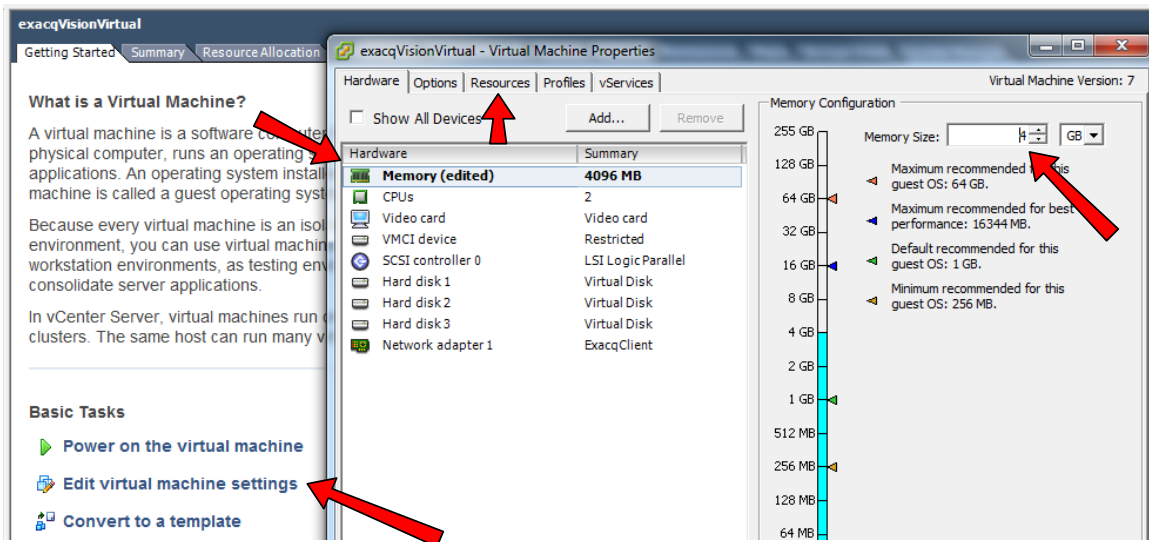
The exacqVision Virtual Appliance is deployed with minimal hardware requirements. As your system grows, the virtual machine must be monitored, and resources might need to be added.

NOTE: Adding network adapters (see section 10) and adding virtual disks (see section 9) do not require a restart of the server. Adding CPUs and memory requires a shutdown of the system.

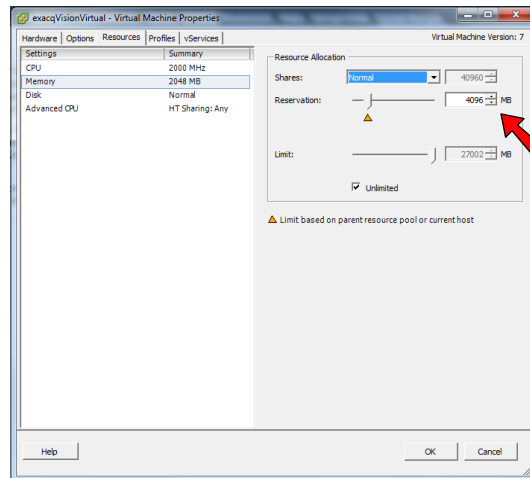
1. From the vSphere Client open the VMs and Template View, right-click on the exacqVision Virtual appliance.
2. From the pop-up menu, choose Power and then shut down Guest. This shuts down the server appropriately.



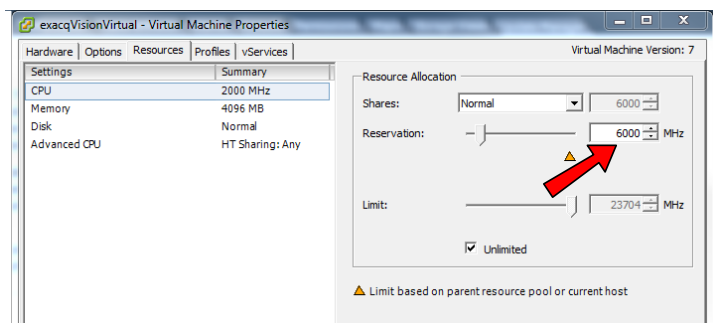
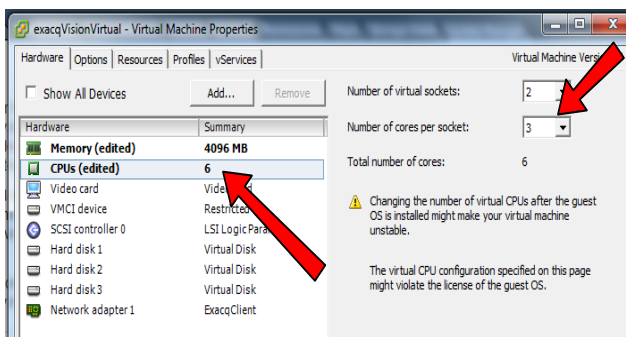
3. After the server is shut down, right-click the server and choose Edit Settings. Alternatively, you can simply click on Edit Virtual Machine Settings under Basic Tasks on the virtual machine's Getting Started tab.



- To add memory, change the Memory value. To do this, select the Resources tab and change the reservation value to the new memory value. Note that without reserving the memory, other virtual machines can utilize memory allocated to this virtual machine if the host of the resource pool the virtual machine resides in becomes constrained.



- To add CPU cores, select the Hardware tab, click CPUs, and change the number of cores per socket. The total number of cores should display the number of virtual sockets times the number of virtual cores.

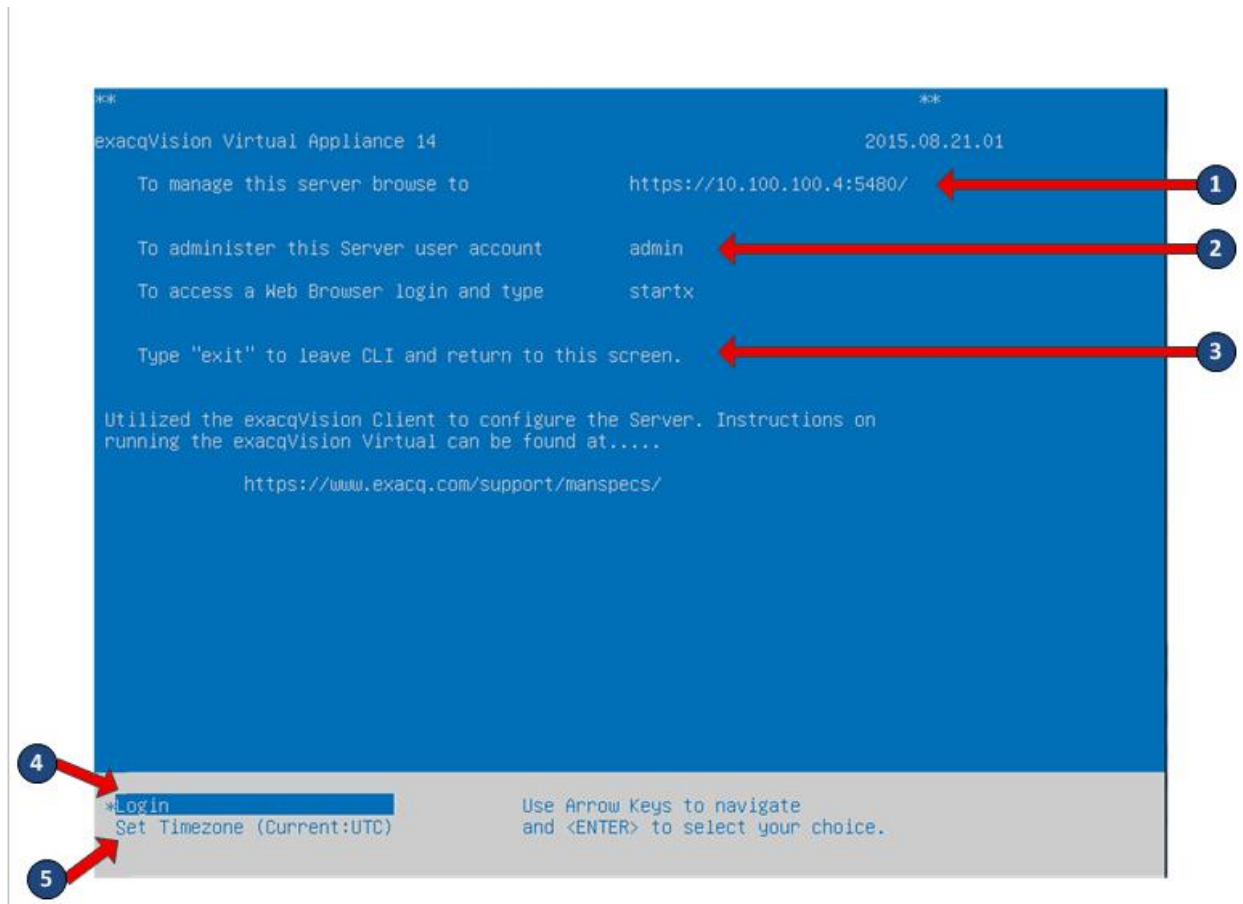


NOTE: You can reduce the reservation of either memory or CPU resources without shutting down the server. If you have resources to spare, it is better to allocate more memory or CPU resources and then set reservations levels to meet the demand of the server during periods of the heaviest recording and viewing.

- Click OK to commit the changes, and then review the reconfiguration in the Recent Tasks pane at the bottom of the client.
- Click on Power on the virtual machine under Basic Tasks.

7 Configuration

The basic configuration of the exacqVision Virtual Appliance can be managed from the web interface and the console screen. To access the console screen, open the VMs and Template view and select the newly deployed exacqVision Virtual Server. Right-click on VM and choose Open Console. A blue screen appears with the access information similar to the following:



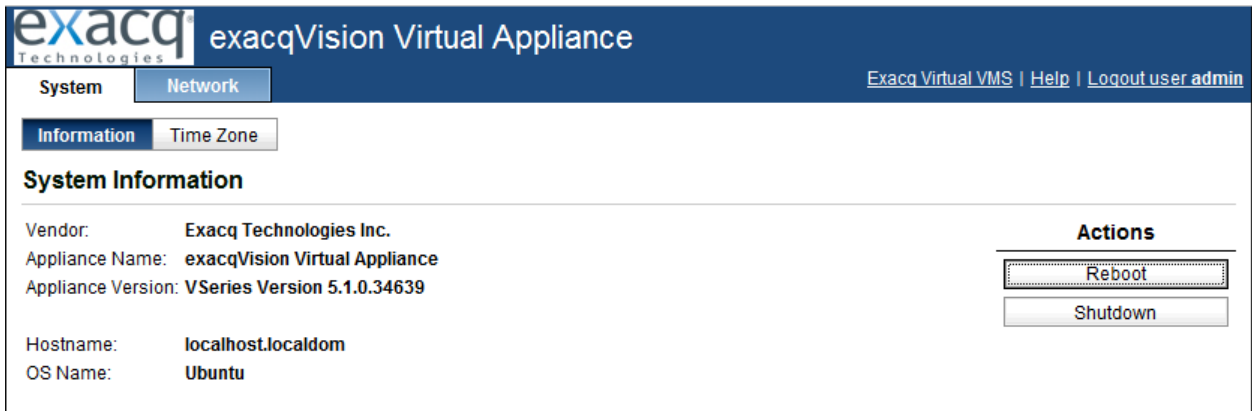
To configure the exacqVision Virtual Appliance, complete the following steps using the previous illustration as a guide:

1. Enter the address shown on your console screen into a web browser to access the web interface.
2. This portion of the console screen shows the administrator login account and password.
3. This portion of the console screen shows instructions for returning to this screen from the CLI.
4. This portion of the console screen allows you to log in to the CLI.
5. This portion of the console screen is the CLI interface for setting the time zone. (It is preferred that you use the Web interface for these settings.)

Open a Web browser and enter the address found using step #1 above. Be sure to include the portion of the address with a colon and port 5480. If your browser gives you a security warning regarding the website security certificate, click Continue to this Website.

Log in with the username "admin" and the password "admin256."

The Web interface has two management tabs, as shown in the following illustration:



- The **System** tab allows you to restart or shut down your server in a safe manner. Click the Time Zone button to set the current time zone (the default time zone is UTC).

NOTE: The client and server can be in different time zones, but the server must be in the correct local zone.

- The **Network** tab displays the current network configurations. You can click on the address button to change the address from DHCP to static. From this screen you can also set the hostname and specify and Alternate DNS Server.

NOTE: If you change the address, you will lose connectivity to the web interface when you save the settings. You can then type the new address in the browser to reconnect to the web interface. Do not change the IP address and hostname at the same time, as the hostname change will not apply. After you change the IP address, you can then log back into the web interface with the new address and then change the hostname.

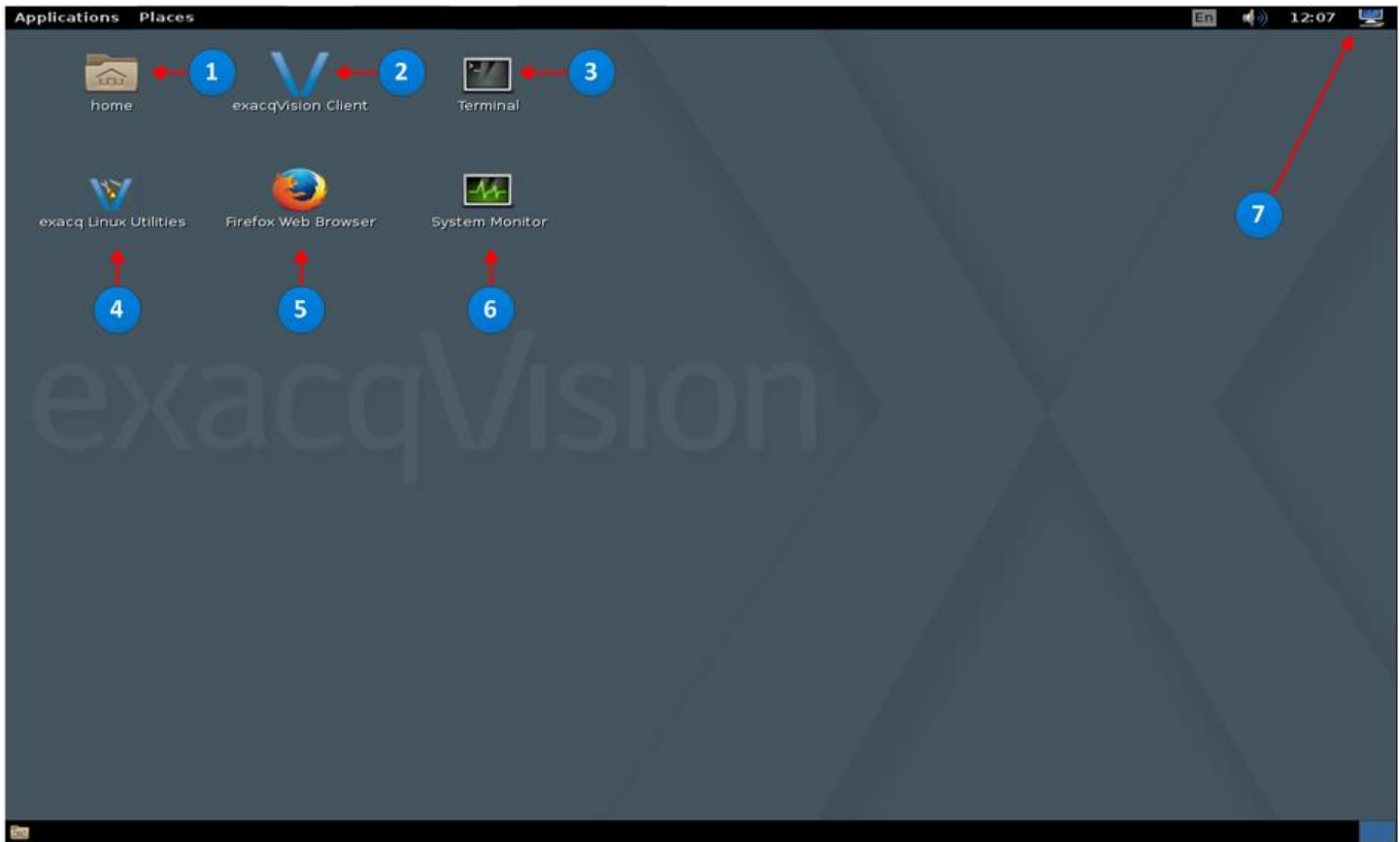


8 Troubleshooting and Monitoring

Administrative Desktop

The exacqVision Virtual Server provides a management GUI interface in the console screen for assisting troubleshooting tasks. The desktop shortcut also has a useful utility script called Exacq Linux Utilities that simplifies accessing and managing common administrative task. The utility script can also be accessed in a terminal format via SSH or from the console by running `sudo exacq`.

To access the GUI Gnome Desktop, open the console screen and choose Login. At the prompt, log in as “admin” with the password of “admin256”. At the command prompt, type `startx` to open the Desktop interface, as shown in the following illustration:



The Desktop interface contains the following options:

1. Home folder opens nautilus file browsers with shortcuts to export and exacqscripts directories.
2. Opens the exacqvision Client. Warning – do not use this console for active viewing of streaming video beyond troubleshooting.
3. Open Command line Interface
4. Linux utility that help manage common Linux configuration on exacq systems.
5. This opens the Firefox web browser. This is useful for accessing a camera’s web management interface directly.
6. System Monitor provides statistics on CPU, memory, and network.
7. Access the Gnome Settings and Log Out screen. Note. The restart and log out functions will not work from this menu. You must logout and shut down from a terminal window or through the VSphere management interface.

Monitoring your Virtual Machine

Because the exacqVision Virtual server is a virtual machine and shares server host hardware, performance issues can be identified using the VMware client. To do this, start your client and open up the Host and Clusters view. From the Inventory pane, click on the server host the exacqVision Virtual Server is running on and click the Virtual machines tab. This screen can quickly provide the following information about the state of your servers:

Name	State	Provisioned Space	Used Space	Host CPU - MHz	Host Mem - MB	Guest Mem - %	Notes
exacqVision Virtual Server 1	Powered On	820.05 GB	49.03 GB	570	2013	17	Warehouse 1 Cameras
exacqVision Virtual Server 3	Powered On	820.05 GB	32.61 GB	1799	2008	14	Build three interior cameras
exacqVision Virtual Server 2	Powered On	820.05 GB	29.13 GB	833	2000	7	Building 3 Parking Lot

1 2 3 4 5 6 7 8

1. **Name.** For better organization, match your server name with the name of server in your exacqVision Client.
2. **State.** Verify that server is powered on. If it is not, right-click the VM and select Power On.
3. **Provisioned Space.** View the amount of space is allocated to the VM. If recording history is too short, additional virtual disk might need to be added (see Section 10).
4. **Used Space.** View how much of the allocated space is in use.
5. **Host CPU – MHz** View how much of the CPU resources your virtual machine is consuming from the host. The default CPU reservation is 2000 MHz; if this value is close to 2000, increase your virtual machine’s CPU count or reservation ([see Upgrading Hardware](#)).
6. **Host Mem – MB.** This is the actual value of memory being allocated to the server. This number indicates the memory reservation and host memory overhead.
7. **Guest Mem – %.** The bar graph shows the percentage of memory in use. If this is consistently 80% or higher, consider allocating additional memory to the virtual machine ([see Upgrading Hardware](#)).
8. **Notes.** Add descriptive information about each virtual machine by editing Annotations, found under the Summary tab of the virtual machine.

Additional virtual machine performance monitoring information can be found in section 11.

9 Configuring Virtual Disk Storage

The default deployment of the exacqVision Virtual Appliance (EVA) includes only a 200GB hard drive. In the video storage world, this is not very much storage; as you increase the number of camera, storage must also be increased.

You can use the [Exacq Configuration Calculator](#) to determine the amount of disk size that you will need. For example, a typical Axis 1.3 MP camera recording 15 frames per second 30% of the time would require about 20 days of video storage on 200GB of storage space.

Do not remove the 100GB default drive from the EVA until after you start the server for the first time. After the server is online, you can proceed with removing or adding new drives using the vCenter client and the appliance command line interface. Removing the default storage drive before starting the server may cause the server will lock up.

If you plan not using the default 200GB video storage drive, select thin provision disk format when deploying the EVA. . It is not necessary to remove this drive before adding new drives targets because exacqVision Client allows you to determine which attached drives you want to save data to.

The exacqVision data disks are mounted by disk label, which is the same as the mount point for each drive. If a new drive is manually added, modify the **fstab** file found in the **/etc** directory utilizing the same format as the default disk drive:

```
LABEL=/mnt/export /mnt/export ext4 defaults 0 0
```

Because the data drive will consume most of the space of any drive, there is no need to partition the data drives. Linux allows the laying of a file system directly onto the disk.

Only the system drive **/dev/sda** is partitioned. Virtual hard disk 2 is dedicated to exacqVision export of video files and is 21GB by default. Exported files are not automatically deleted; thus, available space on the drive must be monitored.

Adding additional storage requires using the command line interface in combination to several GUI tools found in the administrative desktop.

Hard disk space can be expanded virtually and does not required the server to be shut down or restarted. Adding additional storage drive does not require the appliance to shut down or restart, but the exacqvision server service will need to be restarted. This will result in cameras being briefly offline.

Expanding Virtual Disk Storage

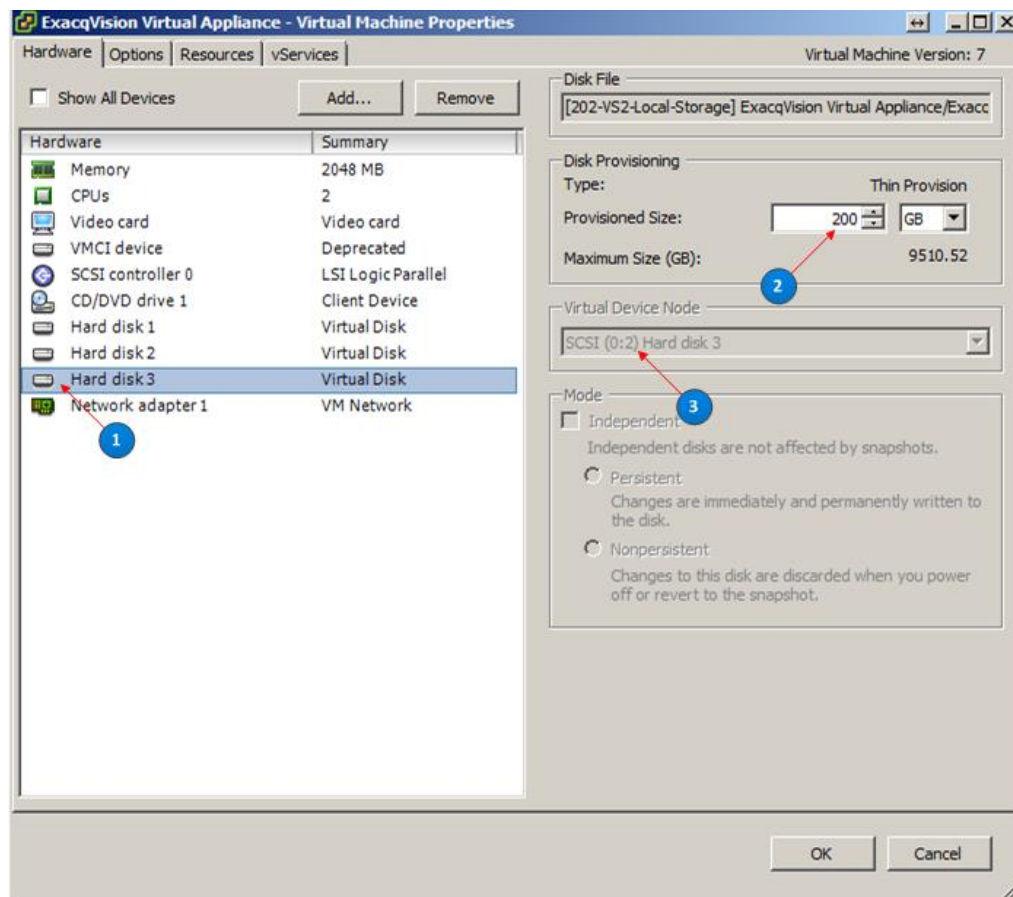
Virtual hard disk 3 is configured for video storage and is formatted with the ext4 file system. This virtual disk can grow to a VMware maximum of 2TB if you are running ESXi 5.1 or to 16 TB for ESXi 5.5 or 6.0. Although virtual disk can be as large as 62 TB in 5.5 and above, the appliance is a 32 bit O.S. and can only support up to 16 TB partitions.

Edit the settings using the VMware client to increase the size of a virtual disk. This will not require a reboot of the EVA. The exacqVision Server scans for drive space every 60 minutes and automatically registers the new space after the scan.

After the disk size is increased on the hypervisor server, the operating system must be adjusted to see the new storage. These instructions are intended for expanding the default 200 GB store, but they can be used to expand any virtual disk that is added to the EVA.

To expand the virtual disk, complete the following steps:

1. Right-click the exacqVision Virtual Appliance and choose Edit Settings



Click on Hard Disk 3 and change the provisioned size to desired size in the right pane. In our example we will expand the 200 GB volume to 1 TB. Note the SCSI host device node number; you will need this when you rescan the SCSI host.

In this example, this important number is 0:2.

- From the client, open a console screen.

```
exacqVision Virtual Appliance 14                               8.6.2.501
  To manage this server browse to                               https://10.16.15.15:5480/
  To administer this Server user account                       admin
  To access a Web Browser login and type                       startx
  Type "exit" to leave CLI and return to this screen.
  Utilized the exacqVision Client to configure the Server. Instructions on
  running the exacqVision Virtual can be found at.....
  https://www.exacq.com/support/manspecs/
*Login                                                         Use Arrow Keys to navigate
  Set Timezone (Current:EDT)                                   and <ENTER> to select your choice.
```

- Click in the console screen and press Enter to go to the command line interface.
- The devices on the SCSI bus are listed in the `/sys/bus/scsi/devices/` directory. In the default deployment of the EVA, three devices correspond to the three disk and are listed by a four-digit number in a `busid:channel:target:LUN` format. For our 200GB data disk, the device number would be 2:0:2:0. The middle two numbers match the virtual device node from step 1. Rescan the this hard drive by using this command:

```
echo 1 | sudo tee /sys/bus/scsi/devices/2:0:2:0/rescan
```

- Format the expanded space using `resize2fs`. Existing data will not be erased; only the new space will be formatted. This process requires an extended amount of time, depending on how much you expand the volume:

```
sudo resize2fs /dev/sdc
```

The output should look similar to this.....

```
resize2fs 1.42.9 (4-Feb-2014)
Filesystem at /dev/sdc is mounted on /mnt/edvr/1; on-line resizing required
old_desc_blocks = 13, new_desc_blocks = 63
The filesystem on /dev/sdc is now 262144000 blocks long.
```




- After the drive is finished resizing, run the command `df /dev/sdc`. The drive should now show up with the added space listed under 1K-blocks. In our example, the drive increased by 800 GB, and we now see 1031992064 1K-blocks which is equivalent to 1 TB.

```
admin@exacqVisionVirtual14:~$ df /dev/sdc
Filesystem      1K-blocks  Used Available Use% Mounted on
/dev/sdc        1031992064 73068 987842280   1% /mnt/edvr/1
admin@exacqVisionVirtual14:~$ _
```

- Type **logout** to exit the terminal window and return to the console screen.

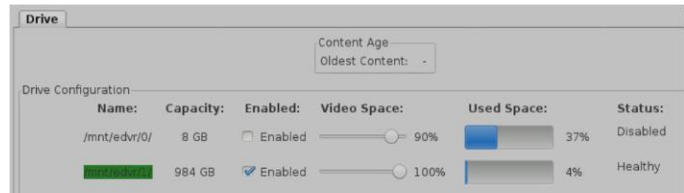
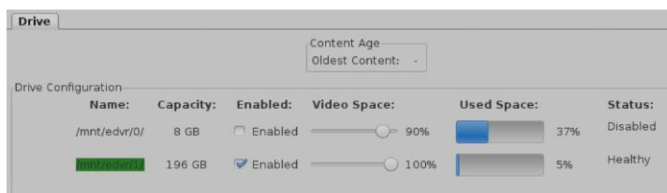
The Exacqvision Server scans all available space every 60 minutes from the time is started and will update the capacity of the drives.

Open exacqVision Client and click on the configuration icon. .

Under configure system, check the system information box **service running since** time to determine the next scan interval. Wait several minutes after the minute mark and then check the capacity of your drive.

Before Scan

After Scan

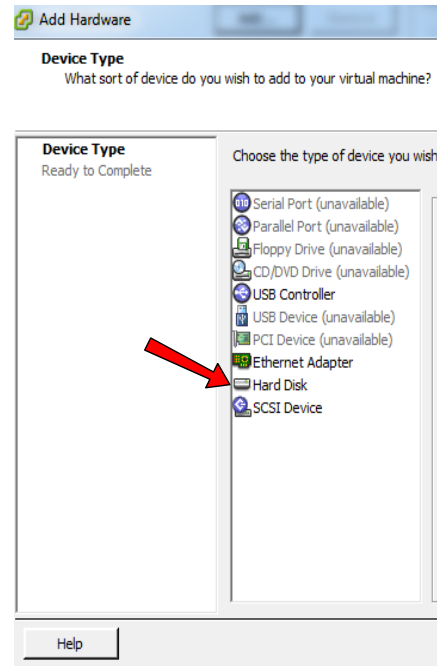
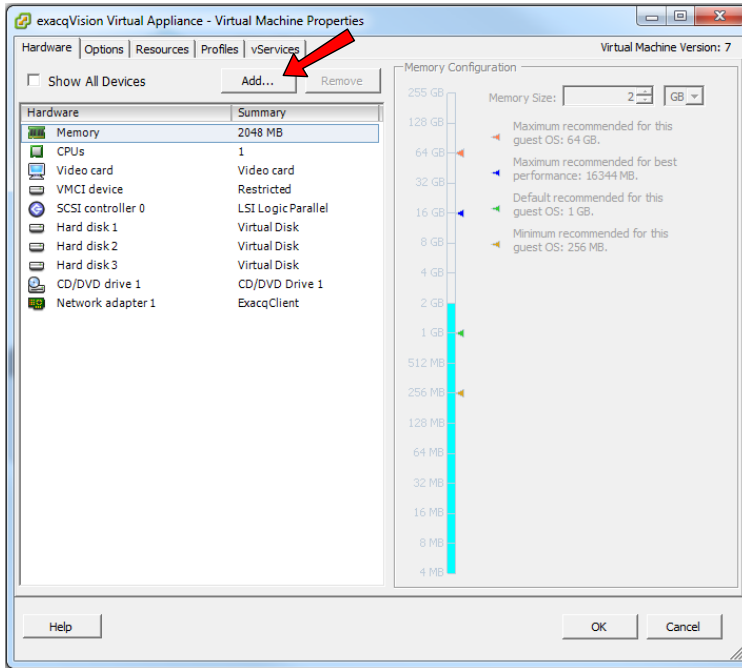


If you want to see the new space immediately, use the exacq Linux Utilities to stop and started the exacqVision Server service. The exacq Linux utilities can be found on the administrative desktop or a non GUI version can be invokes by running the command `sudo exacq` from the command line.

Adding Virtual Disk to exacqVision Virtual Appliance.

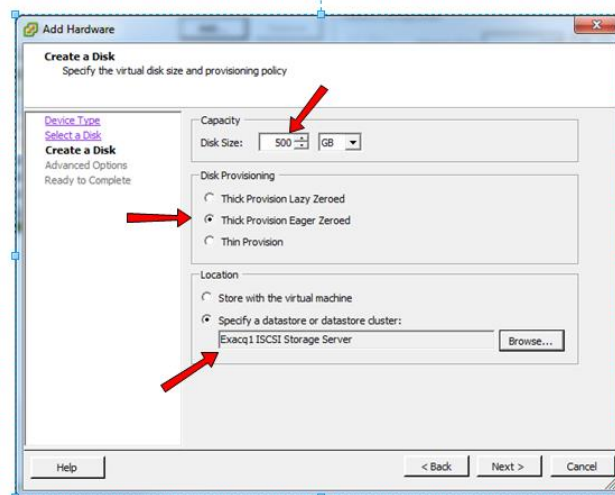
To dynamically add a virtual disk to the EVA, complete the following steps:

1. Right-click the EVA and click Add. Choose Hard Disk and then click Next.

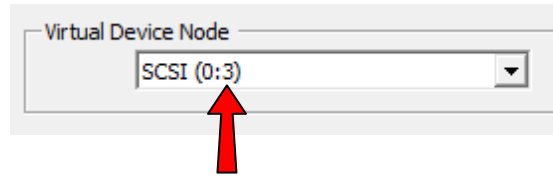


2. On the Select a Disk screen, click next to create a new virtual disk.
3. On the Create a Disk screen, specify the new disk size. Exacq recommends provisioning the drive as Thick Provision Eager Zeroed.

NOTE: Depending on the size of the new disk, this process could require an extended period of time and might negatively affect the performance of a host. Thin provisioning is not an ideal choice, as the drive will quickly become full of recorded data, and performance might lag as the thin-provisioned drive expands. You can choose to keep the new drive with the virtual machine, or you can choose any available datastore presented to the host. Note that video traffic creates a significant load on disk writes, so you will need to monitor your data store to ensure acceptable performance.



4. On the Advance Options screen, note the Virtual Device Node ID and click next.



5. On the Ready to complete screen, review the options and click Finish.
6. Click OK to close the Edit Setting screen and create the disk. You can watch the progress of the disk creation in the Recent Tasks Pane. Do not proceed until the Reconfigure Virtual Machine task is complete.
7. Click on the console screen press enter to display the CLI (command line interface)

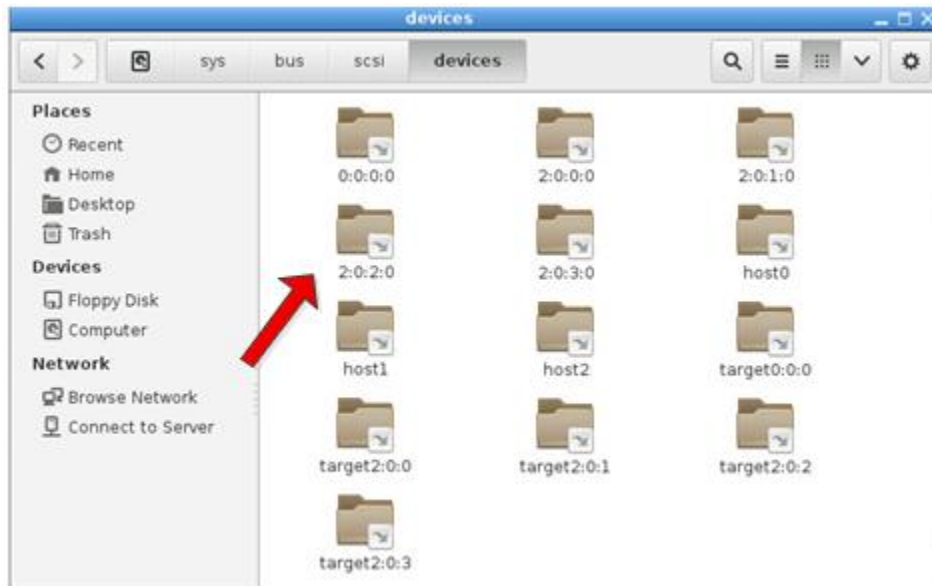
```
exacqVision Virtual Appliance 14 8.6.2.501
To manage this server browse to https://10.16.15.15:5480/
To administer this Server user account admin
To access a Web Browser login and type startx
Type "exit" to leave CLI and return to this screen.
Utilized the exacqVision Client to configure the Server. Instructions on
running the exacqVision Virtual can be found at.....
https://www.exacq.com/support/manspecs/
*login
Set Timezone (Current:EDT) Use Arrow Keys to navigate
and <ENTER> to select your choice.
```

8. Log in as admin with the admin password
9. Rescan the SCSI host on host2 to discover the new drive using the following command:

```
echo "- - -" | sudo tee /sys/class/scsi_host/host2/scan
```



Run startx from the terminal to open the appliance desktop, click on the home desktop icon. In the left pane click on computer and then navigate to sys-**bus-scsi-devices**. A new directory will be displayed with the new drive host bus address such as 2:X:X:0, where X: X matches the virtual device node of the drive you just created.



Click the terminal shortcut on the desktop to open a command line interface. Run command `ls -l /dev/sd*` to produce an output with the last line showing the new drive called `/dev/sdd`:

```
admin@exacqVisionVirtual14:~$ ls -l /dev/sd*
brw-rw---- 1 root disk 8, 0 Oct 2 15:26 /dev/sda
brw-rw---- 1 root disk 8, 1 Oct 2 14:45 /dev/sda1
brw-rw---- 1 root disk 8, 2 Oct 2 15:26 /dev/sda2
brw-rw---- 1 root disk 8, 5 Oct 2 14:45 /dev/sda5
brw-rw---- 1 root disk 8, 6 Oct 2 14:45 /dev/sda6
brw-rw---- 1 root disk 8, 7 Oct 2 14:45 /dev/sda7
brw-rw---- 1 root disk 8, 16 Oct 2 15:26 /dev/sdb
brw-rw---- 1 root disk 8, 32 Oct 2 15:26 /dev/sdc
brw-rw---- 1 root disk 8, 48 Oct 2 16:13 /dev/sdd
admin@exacqVisionVirtual14:~$
```

- The exacqVision video storage should be mounted in the directory `/mnt/edvr/#` where each # is associated with a label attached to a storage device. Use the `ls /mnt/edvr` command to view the number of mount points. You must create a new mount point, incrementing # to the next number. The full path of this new directory will be used as the label for the new storage disk.

```
ls /mnt/edvr
sudo mkdir /mnt/edvr/2
ls /mnt/edvr
```

```
admin@exacqVisionVirtual14:~$ ls /mnt/edvr
0 1
admin@exacqVisionVirtual14:~$ sudo mkdir /mnt/edvr/2
admin@exacqVisionVirtual14:~$ ls /mnt/edvr
0 1 2
admin@exacqVisionVirtual14:~$
```



Format the new drive using the **mkfs** command in ext4 format:

```
sudo mkfs.ext4 -F -L /mnt/edvr/2 /dev/sdd
```

NOTE: The **-L** portion creates a label for the new drive and should be designated as the path to the new mount point created earlier.

The drive then formats the inode tables. Depending on the size of the drive, this could require a few minutes.

```
admin@exacqVisionVirtual14:~$ sudo mkfs.ext4 -F -L /mnt/edvr/2 /dev/sdd
mke2fs 1.42.9 (4-Feb-2014)
Filesystem label=/mnt/edvr/2
OS type: Linux
Block size=4096 (log=2)
Fragment size=4096 (log=2)
Stride=0 blocks, Stripe width=0 blocks
32768000 inodes, 131072000 blocks
6553600 blocks (5.00%) reserved for the super user
First data block=0
Maximum filesystem blocks=0
4000 block groups
32768 blocks per group, 32768 fragments per group
8192 inodes per group
Superblock backups stored on blocks:
    32768, 98304, 163840, 229376, 294912, 819200, 884736, 1605632, 2654208,
    4096000, 7962624, 11239424, 20480000, 23887872, 71663616, 78675968,
    102400000
Allocating group tables: done
Writing inode tables: done
Creating journal (32768 blocks): done
Writing superblocks and filesystem accounting information: done
```

11. The **fstab** file will need to be modified to auto mount the drive when the system boot. If you are in an SSH session follow the terminal instructions below.

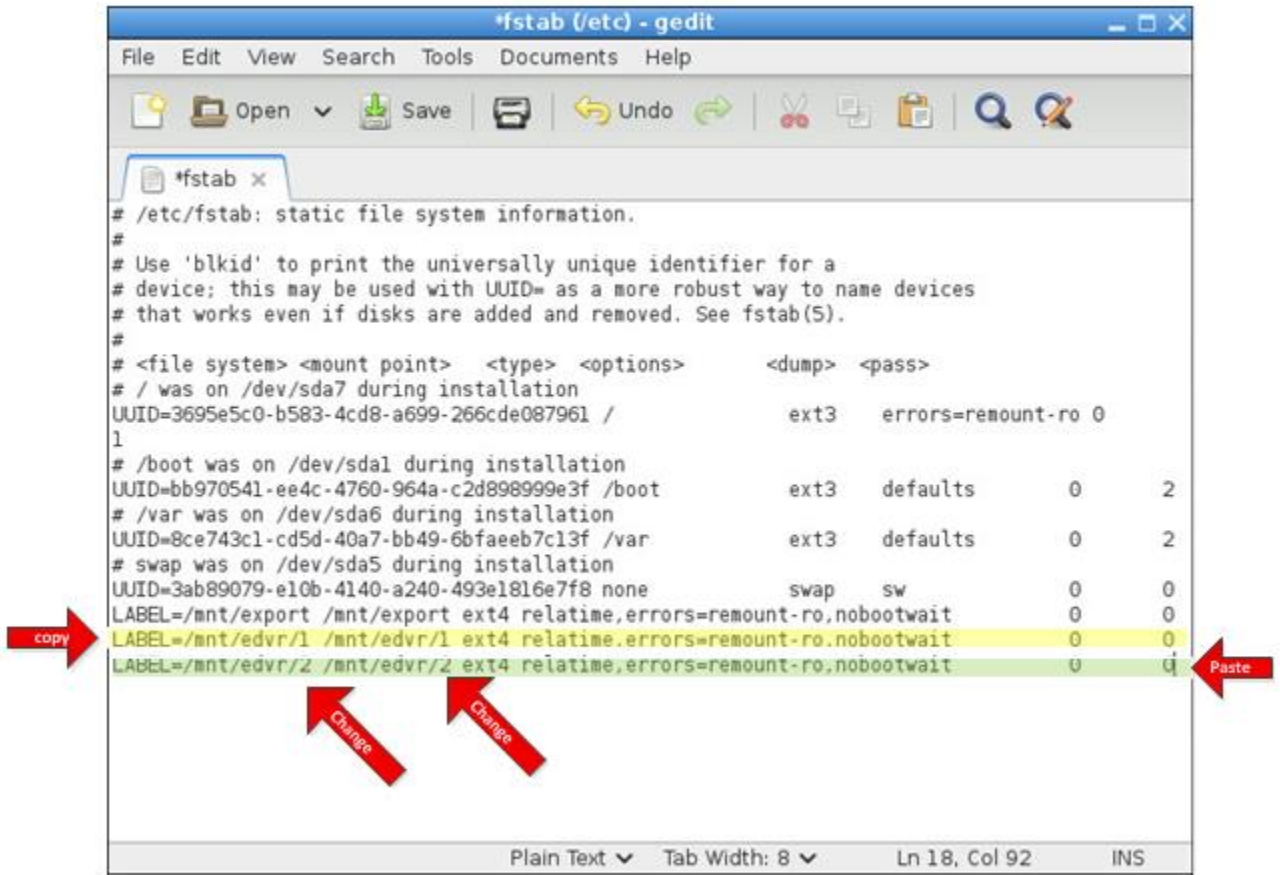
TERMINAL INSTRUCTIONS- Run command **sudo nano /etc/fstab**

Under the last line, insert a label defining the new label used in the mkfs command. The mount point should be the full path to mount point created previously. Be sure to follow the same syntax, as Linux is case-sensitive. Press CTRL+O and then press Enter to save the file. Press CTRL+X to exit the editor.

```
GNU nano 2.2.6 File: /etc/fstab Modified
# /etc/fstab: static file system information.
#
# Use 'blkid' to print the universally unique identifier for a
# device; this may be used with UUID= as a more robust way to name devices
# that works even if disks are added and removed. See fstab(5).
#
# <file system> <mount point> <type> <options> <dump> <pass>
# / was on /dev/sda7 during installation
UUID=486995f4-5b5b-4afb-a99e-dcf403c11e39 / ext3 errors=remount-ro 0 1
# /boot was on /dev/sda1 during installation
UUID=bc5056c4-ca97-446c-a7ec-5e0839660dbb /boot ext3 defaults 0 2
# /var was on /dev/sda6 during installation
UUID=08bd611e-4733-4450-939c-82f9d4be1d2f /var ext3 defaults 0 2
# swap was on /dev/sda5 during installation
UUID=1a88c931-684f-4d15-a926-f67b92a9b6bc none Swap sw 0 0
LABEL=/mnt/export /mnt/export ext4 relatime,errors=remount-ro,nobootwait 0 0
LABEL=/mnt/edvr/1 /mnt/edvr/1 ext4 relatime,errors=remount-ro,nobootwait 0 0
LABEL=/mnt/edvr/2 /mnt/edvr/2 ext4 relatime,errors=remount-ro,nobootwait 0 0
```



GUI INSTRUCTIONS – From the desktop open exacq Linux Utilities and enter the admin password. Double click the System button then Disk button and then the Edit FSTAB button. Copy the last line and paste it below. Change the Label and mount number and save.



12. From the Terminal Re-read the fstab file by using the command:

```
sudo udevadm trigger
```


13. Mount the drive using the drives label, which is the same as the mount point:

```
sudo mount /mnt/edvr/2
```

14. Verify the new drive by using the command **df**. The last entry should be your new drive. In this example, we added a 500GB drive mounted at /mnt/edvr/2.

```
admin@exacqVisionVirtual14:~$ df -h
Filesystem      Size  Used Avail Use% Mounted on
udev            998M   12K  998M   1% /dev
tmpfs           202M   548K  202M   1% /run
/dev/sda7       8.9G   2.9G   5.7G  34% /
none            4.0K     0   4.0K   0% /sys/fs/cgroup
none            5.0M     0   5.0M   0% /run/lock
none           1008M   8.0K 1008M   1% /run/shm
none            100M   4.0K  100M   1% /run/user
/dev/sda1       114M   38M   70M  35% /boot
/dev/sda6       1.9G  365M   1.4G  21% /var
/dev/sdb        20G   44M   19G   1% /mnt/export
/dev/sdc        985G   72M  943G   1% /mnt/edvr/1
/dev/sdd        493G   70M  467G   1% /mnt/edvr/2
```

15. The exacqVision Service must be restarted to see the new drive. This can be done using the exacq Linux Utilities under the Server options or from the CLI using the command **sudo service edvrserver restart**

16. Open up the exacqVision Client, click on the configuration icon , and navigate to Storage. The new drive should be displayed and enabled for storage.




Removing a Virtual Disk

If you want to remove a disk, the drive must first be removed from the operating system and then removed from the virtual machine. Failure to remove the disk from the operating system first will result in the operating system freezing when started.

The 100GB storage drive is also provisioned to be on the same datastore as the server. This might not be desirable for your specific storage setup. If this is an initial setup, and data has not been written to the default disk, Exacq recommends thin provisioning the disk and simply disabling the disk as a recording source in exacqVision Client.

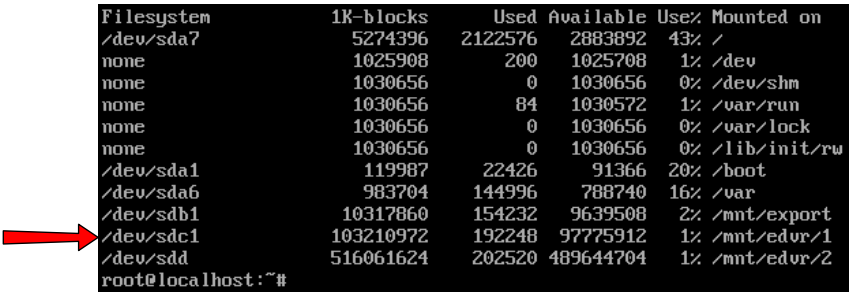
In the following example, a 500GB storage drive is added on an external iSCSI storage server and the 100GB default drive is removed from the same datastore location as the EVA.

NOTE: After storage is removed, any video previously stored on the drive is lost. Any data that you want to preserve or search must need to be migrated to another drive before deleting the drive.

1. Open exacqVision Client, click on the config (Setup) icon , and navigate to Storage. Deselect the 100GB drive to stop recording to it. Click **Apply**.
2. Click in the console screen and press Enter to display to the CLI. Log in as **admin**.
3. If data must be migrated or deleted, you must do that now.
4. Unmounts the drive by its label (which is the same as its mount point) using this command:

```
sudo umount /mnt/edvr/1
```

Do not remove the mount point directory. If you are not sure which drive is the correct drive, use the **df** command to view the mounted drives. In this case, the drive is **sdc** mounted on **/mnt/edvr/1**.



Filesystem	1K-blocks	Used	Available	Use%	Mounted on
/dev/sda7	5274396	2122576	2883892	43%	/
none	1025908	200	1025708	1%	/dev
none	1030656	0	1030656	0%	/dev/shm
none	1030656	84	1030572	1%	/var/run
none	1030656	0	1030656	0%	/var/lock
none	1030656	0	1030656	0%	/lib/init/rw
/dev/sda1	119987	22426	91366	20%	/boot
/dev/sda6	983704	144996	788740	16%	/var
/dev/sdb1	10317860	154232	9639508	2%	/mnt/export
/dev/sdc1	103210972	192248	97775912	1%	/mnt/edvr/1
/dev/sdd	516061624	202520	489644704	1%	/mnt/edvr/2

5. The **fstab** file must be modified to remove the entry for the disk. The fstab file can be modified using gedit through the GUI exacq Linux Utilities found on the desktop or from the CLI using command

```
sudo nano /etc/fstab
```

- Locate the drive listed by its label. Use the arrow keys to move to the front of the line and press Delete until the entire line is deleted and the bottom line is moved up.

```

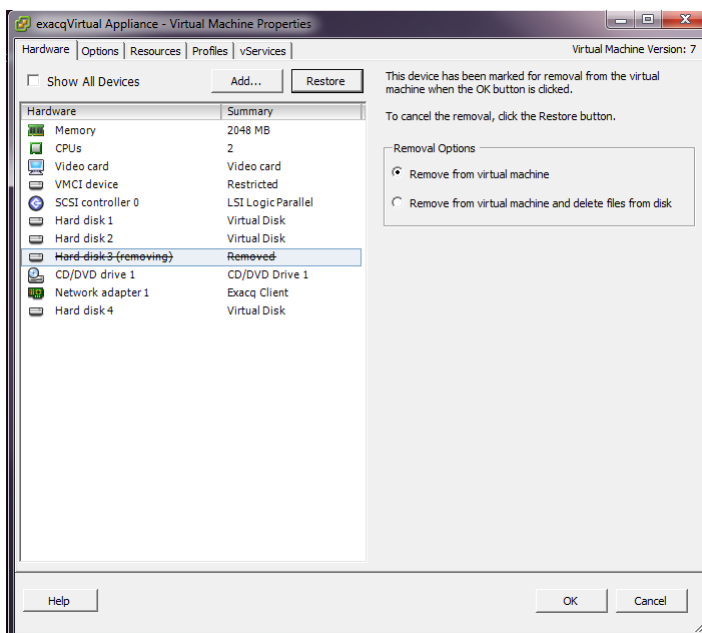
GNU nano 2.2.6      File: /etc/fstab      Modified
# /etc/fstab: static file system information.
#
# Use 'blkid' to print the universally unique identifier for a
# device; this may be used with UUID= as a more robust way to name devices
# that works even if disks are added and removed. See fstab(5).
#
# <file system> <mount point> <type> <options>      <dump> <pass>
# / was on /dev/sda7 during installation
UUID=486995f4-5b5b-4afb-a99e-dcf403c11e39 /          ext3    errors=remount-ro 0    1
# /boot was on /dev/sda1 during installation
UUID=bc5056c4-ca97-446c-a7ec-5e0839660dbb /boot      ext3    defaults          0    2
# /var was on /dev/sda6 during installation
UUID=08bd611e-4733-4450-939c-82f9d4be1d2f /var       ext3    defaults          0    2
# swap was on /dev/sda5 during installation
UUID=1a88c931-684f-4d15-a926-f67b92a9b6bc none       swap    sw                0    0
LABEL=/mnt/export /mnt/export ext4 relatime,errors=remount-ro,nobootwait 0 0
LABEL=/mnt/edup/1 /mnt/edup/1 ext4 relatime,errors=remount-ro,nobootwait 0 0
LABEL=/mnt/edvr/2 /mnt/edvr/2 ext4 relatime,errors=remount-ro,nobootwait 0 0

```

- Press **CTRL+O** and then Enter to save the file. Press **CTRL+X** to exit the editor.
- Delete the device from the operating system using the following command:

```
echo 1 | sudo tee /sys/block/sdc/device/delete
```

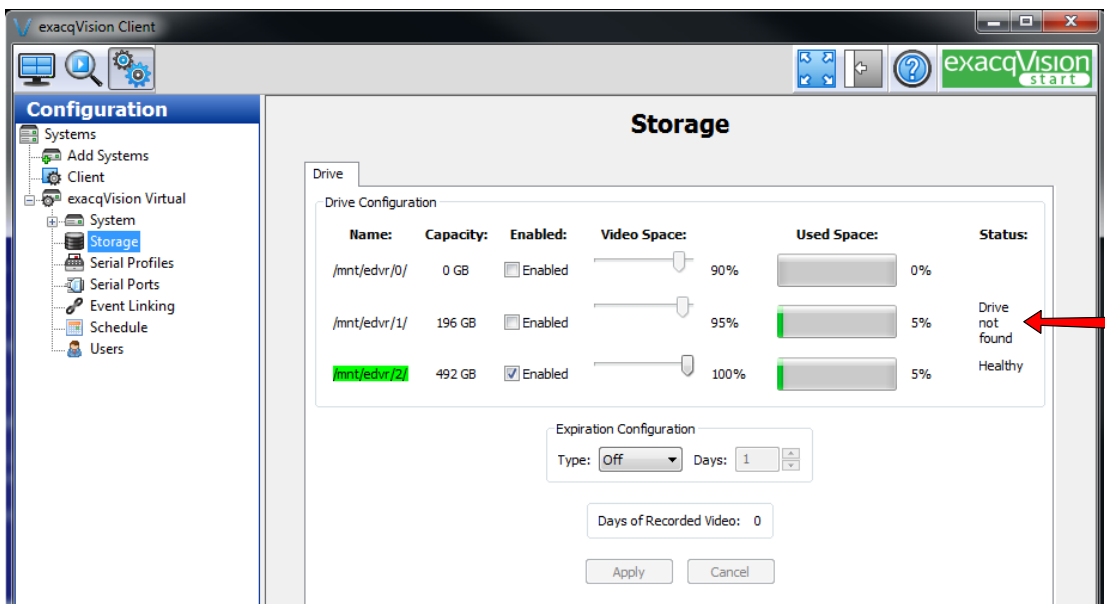
- The drive can now be removed from the virtual machine. Right-click on the EVA appliance and click Edit Settings. Click on the target hard drive to be removed and then click on the Remove button. Click **OK**.



You have now successfully removed the drive from your appliance. To reclaim the space, use vSphere Client to browse the datastore where your appliance was deployed to and delete the file ending in "**2.vmdk**" that has a provisioned size of 209,715,200.00 KB.

Name	Size	Provisioned Size
exacqVision Virtual Appliance_1.vmdk	211,968.00 KB	20,971,520.00 KB
exacqVision Virtual Appliance-44c54a1e.vswp	34,816.00 KB	
exacqVision Virtual Appliance.vmsd	0.00 KB	
exacqVision Virtual Appliance.vmx~	4.31 KB	
vmx-exacqVision Virtual Appliance-1153780254-1.vswp	167,936.00 KB	
exacqVision Virtual Appliance.vmdk	0.00 KB	
exacqVision Virtual Appliance.nvram	8.48 KB	
exacqVision Virtual Appliance.vmdk	9,233,408.00 KB	15,728,640.00 KB
exacqVision Virtual Appliance_2.vmdk	1,828,864.00 KB	209,715,200.00 KB
vmware.log	182.31 KB	
exacqVision Virtual Appliance.vmx	4.36 KB	

NOTE: exacqVision Client will display the removed drive with a status of Drive not Found.



This is to be expected and will remain that way until another disk is either added with the label /mnt/edvr/1 or the exacqVision server service is stopped and the drive entry is removed from the file **/usr/local/exacq/server/psfpi.xml**

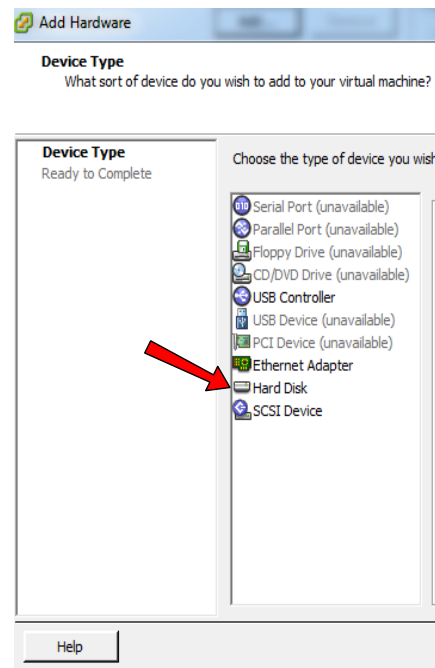
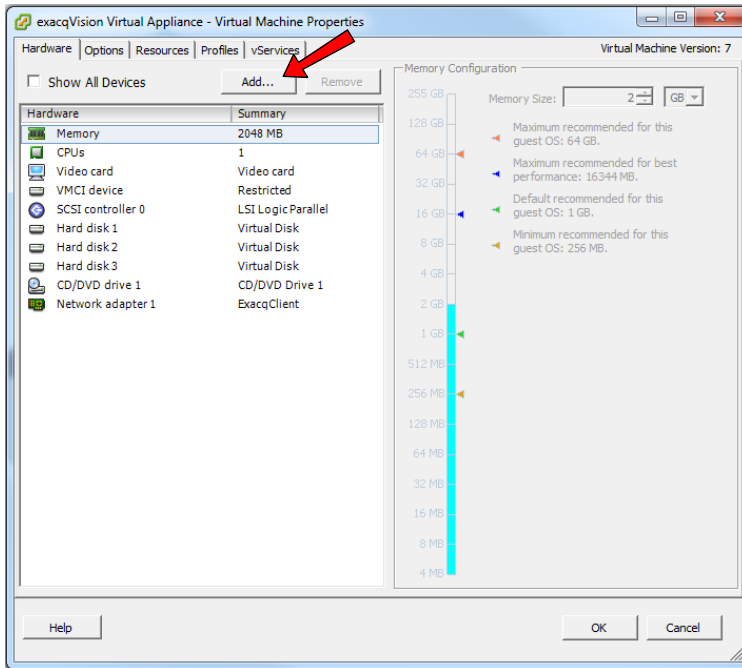
```
<?xml ?>
<eDVR Delta="0">
  <Storage ID="327680" Expiration="0" Thumbnail="2" TimeLapseSchedule="0" TimeLapse="-1000" ContentAge="-1" SupportsTargetSearch="1" PreserveExpirationAudioWithVideo="0">
    <Drive Name="/mnt/edvr/0/" Enabled="0" Percent="90" System="1" />
    <Drive Name="/mnt/edvr/1/" Enabled="1" Percent="100" System="0" />
    <Expiration Type="0" Days="0" />
  </Storage>
  <Cases ID="393216" SupportsCases="0" />
</eDVR>
```



Working with Logical Volumes

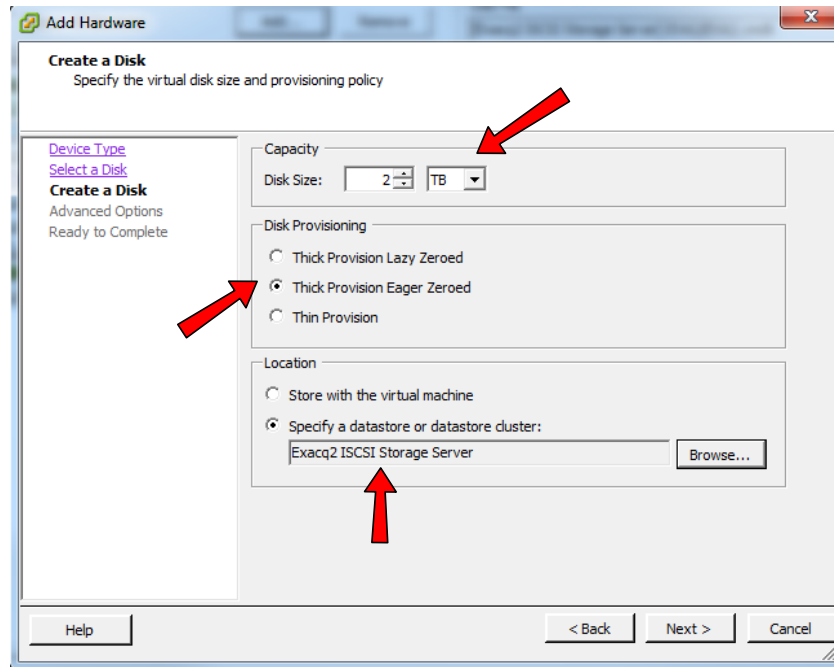
VMware 5.1 has a hard limit of 2TB minus 512 bytes. Disk space can be added to the server by mounting individual disk drives up to the 2TB limit. As you expand your system, or decide to deploy an EVA that requires a large amount of disk space, it might be easier to create a LVM combining multiple 2TB virtual disks. Your physical storage should be protected by a RAID level, so there is no need to create a RAID group with the defined LVM, as this would decrease performance. When you deploy a LVM, it is important that all of the LVM disks are from the same VMware-defined datastore.

1. Right-click the EVA and click **Add**. Choose Hard Disk and then click **Next**.

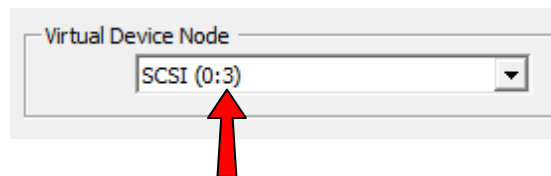


2. On the Select a Disk screen, click next to create a new virtual disk.
3. On the Create a Disk screen, specify the new disk size. Exacq recommends provisioning the drive as Thick Provision Eager Zeroed.

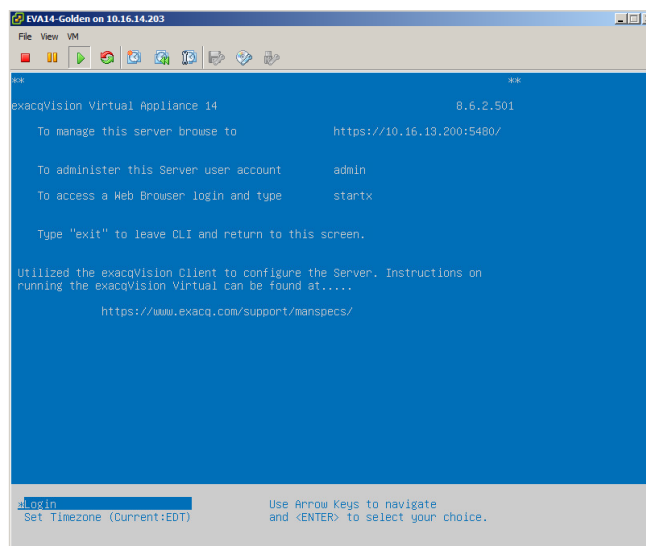
NOTE: Depending on the size of the new disk, this process could require an extended period of time and might negatively affect the performance of a host. Thin provisioning is not a good choice, as the drive will quickly become full of recorded data. You can choose to keep the new drive with the virtual machine, or you can choose any available datastore presented to the host. Note that video traffic creates a significant load on disk writes, so you will need to monitor your data store to ensure acceptable performance. Also, make sure your network is appropriate for managing the increase data streams.



4. On the Advance Options screen, note the Virtual Device Node ID and click next.



5. On the Ready to complete screen, review the Options and then click Finish.
6. Repeat these steps for each disk you want to add.
7. Click OK to close the Edit Setting screen and create the disk. You can watch the progress of the disk creation in the Recent Tasks Pane. Do not proceed until the Reconfigure Virtual Machine task is complete.
8. Click on the console screen and wait for the server to display the default console screen:




- Click in the console screen and press Enter to display the CLI. Log in as **admin**.
- Rescan the SCSI host on host2 to discover the new drives:

```
echo "--" | sudo tee /sys/class/scsi_host/host2/scan
```

The new drives should now show up in **your /sys/bus/scsi/devices** directory as 2:X:X:0, where X:X matches the Virtual Device Node of the drives you just created.

Typing the command **ls -l /dev/sd*** now produces an output with the last line showing the new drives as **sdd** and **sde**.

```
root@localhost:/home/admin# ls -l /dev/sd*
brw-rw---- 1 root disk 8, 0 2012-10-11 20:22 /dev/sda
brw-rw---- 1 root disk 8, 1 2012-10-11 20:22 /dev/sda1
brw-rw---- 1 root disk 8, 2 2012-10-11 20:22 /dev/sda2
brw-rw---- 1 root disk 8, 5 2012-10-11 20:22 /dev/sda5
brw-rw---- 1 root disk 8, 6 2012-10-11 20:22 /dev/sda6
brw-rw---- 1 root disk 8, 7 2012-10-11 20:22 /dev/sda7
brw-rw---- 1 root disk 8, 16 2012-10-11 20:22 /dev/sdb
brw-rw---- 1 root disk 8, 32 2012-10-11 20:22 /dev/sdc
brw-rw---- 1 root disk 8, 48 2012-10-11 20:53 /dev/sdd
brw-rw---- 1 root disk 8, 64 2012-10-11 20:53 /dev/sde
root@localhost:/home/admin#
```



- Using the **pvcreate** command, create a physical volume label out of the virtual disk. List each disk that will be used in the volume, separated by a space.

```
sudo pvcreate /dev/sdd /dev/sde
```

```
admin@ExacqVirtual:~$ sudo pvcreate /dev/sdd /dev/sde
Physical volume "/dev/sdd" successfully created
Physical volume "/dev/sde" successfully created
```

- Create a volume group and give it a name that references the datastore the physical drives are on, with an incremented number. List every physical volume that you just created, separated by a space. If volume groups on the server already exist, use the **vgcreate** command to determine the next increment number:

```
sudo vgcreate ExacqStorageServer01 /dev/sdd /dev/sde
```

```
admin@ExacqVirtual:~$ sudo vgcreate ExacqStorageServer01 /dev/sdd /dev/sde
Volume group "ExacqStorageServer01" successfully created
```



13. Create a logical volume using all of the space. The command is formatted as follows:

```
sudo lvcreate -L (size of Volume) (name of volume group) -n (Logical Volume Name)
```

In most cases, you will be allocating all the free space in the logical volume to video storage. You can accomplish that by substituting “-L (size of Volume) in the command above with “-l |100%FREE.” In this example, the command would look like this.

```
sudo lvcreate -l +100%FREE ExacqStorageServer01 -n Video_Storage_01
```

If you do not want to use all the space, you must specify the size. In this example, two 2TB volumes have been added at 3999.99G. To determine smaller volumes, use the figure 99.997 for every 100GB allocated in a disk. If you are close to using all of the space, the system will round up to use all the space.

The volume group name should be the name that you provided earlier. You could use a name like **Video_Storage_XX**, where XX is an incremental number for the syntax of the LV name:

```
sudo lvcreate -L 3999.99G ExacqStorageServer01 -n Video_Storage_01
```

```
admin@ExacqVirtual:/$ sudo lvcreate -L 3999.99G ExacqStorageServer01 -n Video_Storage_01
Rounding up size to full physical extent 3.91 TiB
Logical volume "Video_Storage_01" created
```

14. You can now view your new volume using the **lvs** command:

```
admin@ExacqVirtual:/$ sudo lvs
LU          VG          Attr      LSize  Origin Snap%   Move Log Copy
% Convert
Video_Storage_01 ExacqStorageServer01 -wi-a- 3.91t
```

15. Format the Logical volume using the ext4 format. There are a number of information-gathering steps that should be done first before proceeding with the format.

The new device created will exist in a new directory with the name of the volume group. Use the **lvscan** command to get the full path.

```
admin@ExacqVirtual:/$ sudo lvscan
ACTIVE          "/dev/ExacqStorageServer01/Video_Storage_01" [3.91 TiB] inhe
rit
```

16. The exacqVision video storage should be mounted in the directory `/mnt/edvr/#`, where each # is associated with a label attached to a storage device. Use the `ls/mnt/edvr` command to view the number of mount points. You must create a new mount point incrementing to the next number. The full path of this new directory will be used as the label for the device:

```
ls /mnt/edvr
sudo mkdir /mnt/edvr/2
ls /mnt/edvr
```

```
admin@ExacqVirtual:/$ ls /mnt/edvr
0 1
admin@ExacqVirtual:/$ sudo mkdir /mnt/edvr/2
admin@ExacqVirtual:/$ ls /mnt/edvr
0 1 2 ←
admin@ExacqVirtual:/$ _
```

In this example, the new label would be `/mnt/edvr/2`. Knowing where the device is located and the label name to use, format the new volume. Note that you are creating very large volumes, so this will take an extended time to write out the inode tables. There are 16000 inode tables for each 2 TB drive.

```
sudo mkfs.ext4 -L /mnt/edvr/2 /dev/ExacqStorageServer01/Video_Storage_01
```

The output should look similar to this:

```
mke2fs 1.41.11 (14-Mar-2010)
Filesystem label=/mnt/edvr/2
OS type: Linux
Block size=4096 (log=2)
Fragment size=4096 (log=2)
Stride=0 blocks, Stripe width=0 blocks
262144000 inodes, 1048573952 blocks
52428697 blocks (5.00%) reserved for the super user
First data block=0
Maximum filesystem blocks=0
32000 block groups
32768 blocks per group, 32768 fragments per group
8192 inodes per group
Superblock backups stored on blocks:
    32768, 98304, 163840, 229376, 294912, 819200, 884736, 1605632, 2654208,
    4096000, 7962624, 11239424, 20480000, 23887872, 71663616, 78675968,
    102400000, 214990848, 512000000, 550731776, 644972544

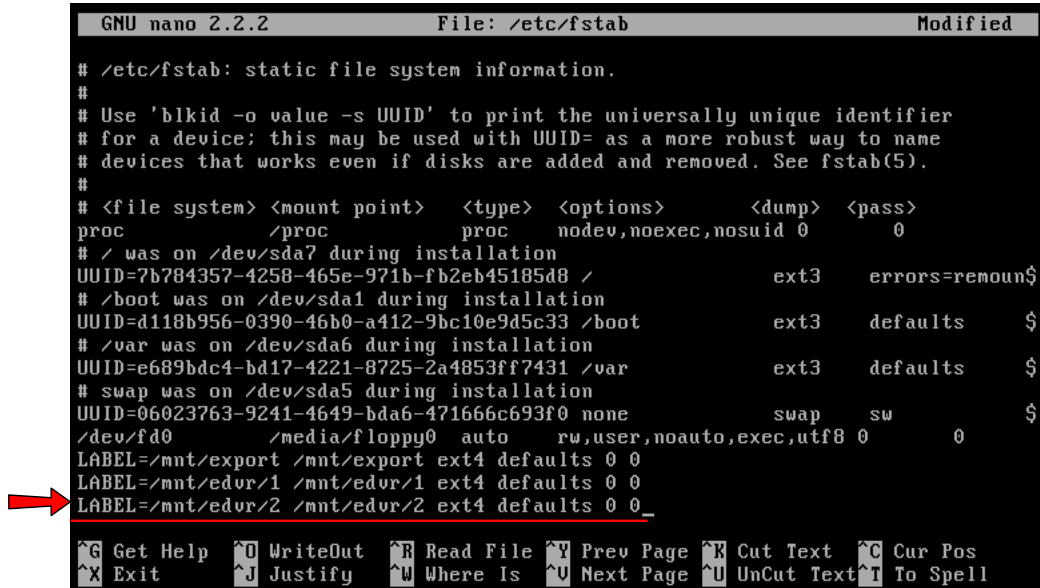
Writing inode tables: done
Creating journal (32768 blocks): done
Writing superblocks and filesystem accounting information: done

This filesystem will be automatically checked every 25 mounts or
180 days, whichever comes first. Use tune2fs -c or -i to override.
```

17. Edit the **fstab** to include the new label. Be sure to note case sensitivity. Open the **fstab** file using nano:

```
sudo nano /etc/fstab
```

Under the last line, insert a Label defining the new label used in the **mkfs** command. The mount point should be the full path to mount point created previously.



```
GNU nano 2.2.2 File: /etc/fstab Modified
# /etc/fstab: static file system information.
#
# Use 'blkid -o value -s UUID' to print the universally unique identifier
# for a device; this may be used with UUID= as a more robust way to name
# devices that works even if disks are added and removed. See fstab(5).
#
# <file system> <mount point> <type> <options> <dump> <pass>
proc /proc proc nodev,noexec,nosuid 0 0
# / was on /dev/sda7 during installation
UUID=7b784357-4258-465e-971b-fb2eb45185d8 / ext3 errors=remoun$
# /boot was on /dev/sda1 during installation
UUID=d118b956-0390-46b0-a412-9bc10e9d5c33 /boot ext3 defaults $
# /var was on /dev/sda6 during installation
UUID=e689bdc4-bd17-4221-8725-2a4853ff7431 /var ext3 defaults $
# swap was on /dev/sda5 during installation
UUID=06023763-9241-4649-bda6-471666c693f0 none swap sw $
/dev/fd0 /media/floppy0 auto rw,user,noauto,exec,utf8 0 0
LABEL=/mnt/export /mnt/export ext4 defaults 0 0
LABEL=/mnt/edur/1 /mnt/edur/1 ext4 defaults 0 0
LABEL=/mnt/edur/2 /mnt/edur/2 ext4 defaults 0 0
^G Get Help ^O WriteOut ^R Read File ^V Prev Page ^K Cut Text ^C Cur Pos
^X Exit ^J Justify ^W Where Is ^U Next Page ^U UnCut Text ^T To Spell
```

18. Press **CTRL+O** and then Enter to save the file. Press **CTRL+X** to exit the editor.

19. Re-read the **fstab** file by typing this command:

```
sudo udevadm trigger
```

20. Mount the new volume by specifying the full device path name and mount point:

```
sudo mount /mnt/edur/2
```


21. Use the **df** command to view the new disk. Notice that you now have a 4 TB volume

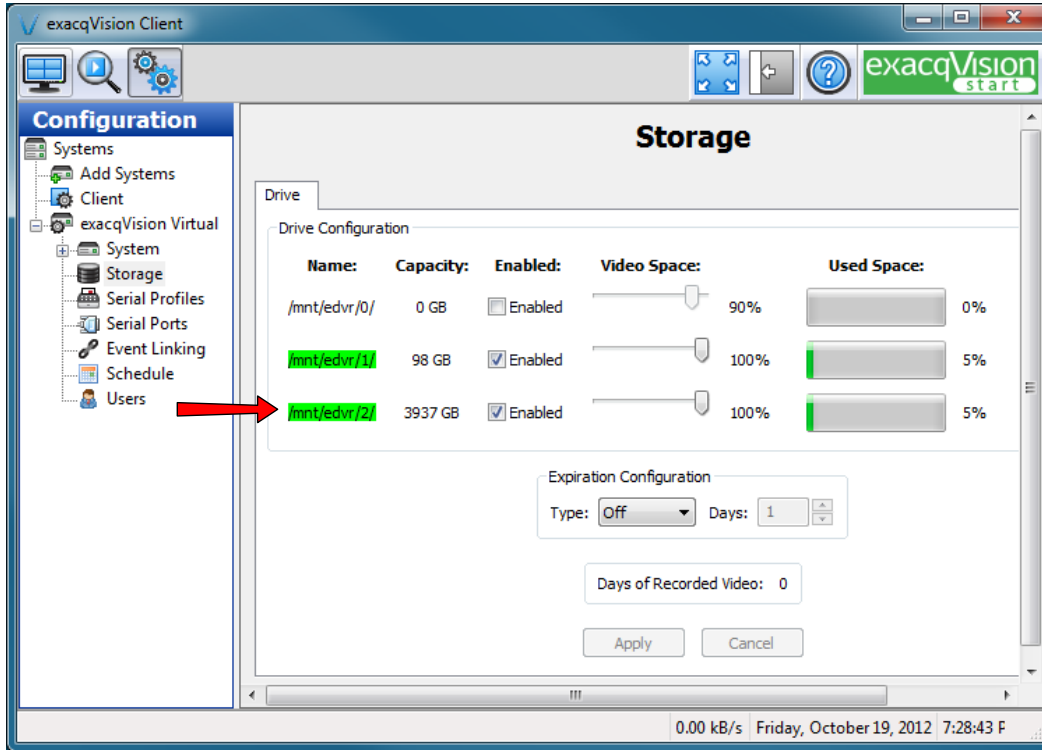


22. The exacqVision Server must be restarted to see the new drive:

```
sudo service edvrserver restart
```



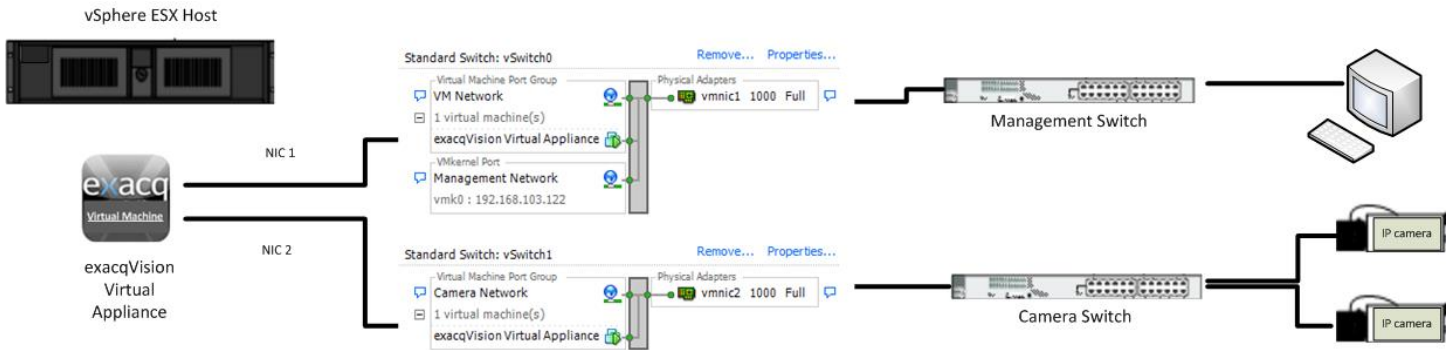
Open exacqVision client and click the Config (Setup) icon . Under your server in the site tree, open Storage and view the new 4TB volume. It should be listed as Enabled and ready to receive video storage.



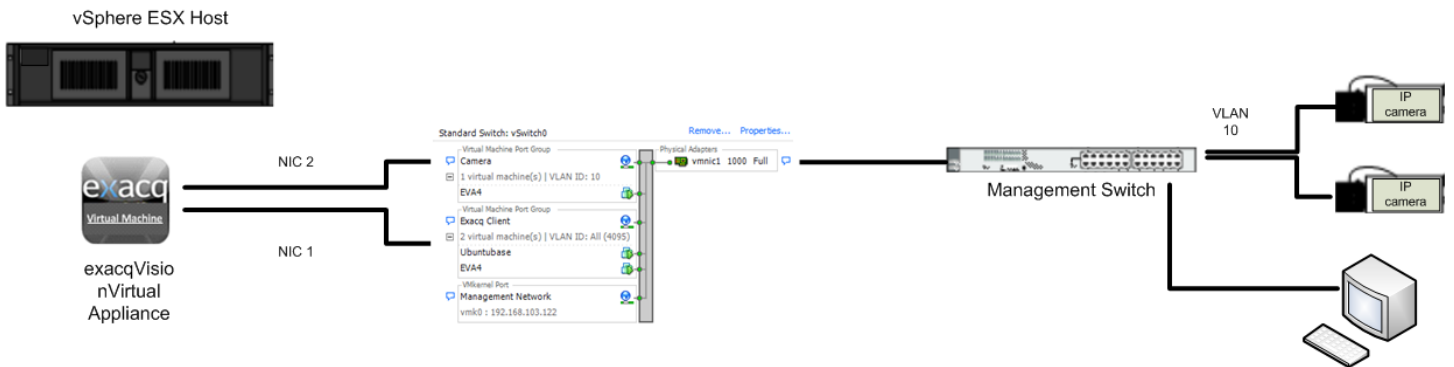
10 Configuring Additional Networking

A common configuration isolates video traffic from management traffic for either security reasons or to isolate video traffic on a physically separate network. The exacqVision Virtual appliance is deployed with only one interface (eth0). Before adding interfaces, start the appliance for the first time. The first network connection's MAC address is used for licensing the server in the client. This interface should always be configured for your management network.

If you want physically separated networks attached to your VMware host, configure a new standard switch and connect it to one or more dedicated virtual machine NICs. A VMkernel Port is not required for the switch.



If a physical separate network is not available and your network supports VLANs, create a Camera Virtual Machine port group using the same physical interfaces as the management network, and then assign to a security VLAN ID on your network.

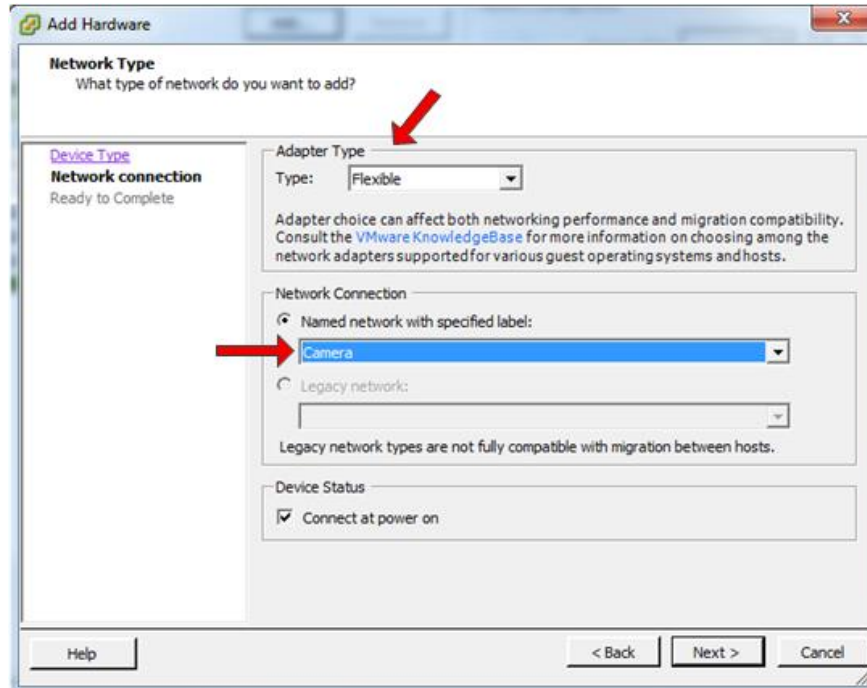


Configure a second port group for the management interface and use VLAN ID 4095, which accepts all VLAN traffic. Connect the deployment interface to this port group. After the virtual machine has been deployed, add a second Ethernet interface and attach it to the Camera Port group.

Either scenario can support multiple physical adapters in order to provide redundancy for the virtual switch.

After the appliance is running and the IP address of eth0 has been applied, a second Ethernet adapter can be configured using the following steps:

1. From the vSphere Client, right-click the exacqVision Virtual Appliance and choose Edit Settings.
2. Click the Add... button.
3. Choose Ethernet Adapter and click **Next**.
4. Change the adapter type to flexible. Click on the Network Connection drop-down list and choose the network that will be used for camera traffic. Make sure Connect at Power On remains selected, and then click **Next**.



5. Click Finish to close the wizard and click OK to complete the editing of the virtual computer.
6. Open a console screen and log in using the admin account.
7. Configure the new interface using the **VamiNet.sh** script which can be accessed by Home shortcut on the admin desktop and double clicking the exacqscripts link. Choose Run in Terminal to execute the script. This allows you to set a static IP address on the new interface that was just added. The VamiNet script includes other functionality such as restarting network service, ping test, or setting the appliance host name.

```
VM Network Reset Options
*
* --> [1] Enter Fixed IP Information
*
* --> [2] Restart Network Services
*
* --> [3] Ping an Address
*
* --> [4] Set Host Name
*
* --> [q] exit
*
*****
Enter your menu choice [1-4 or q]:
```



- Open a web browser and navigate to the appliance's web interface. Log in as admin and click on the Network tab. Under Status, note that the two adapters are correctly configured to two separate networks.

The screenshot shows the web interface of the exacqVision Virtual Appliance. The top navigation bar includes 'System' and 'Network' tabs, with 'Network' selected. The user is logged in as 'admin'. The 'Network Status' section displays the following information:

- Hostname: **exacqVision.local**
- IPv4 Default Gateway: **10.10.1.254**
- Preferred DNS Server: **192.168.1.218**
- Alternate DNS Server:

An 'Actions' section contains a 'Refresh' button. Below this is a table with the following data:

Interface Name	IPv4 Info	Managed by VAMI
eth0	Type: Static Address: 192.168.103.131 Netmask: 255.255.252.0	Yes
eth1	Type: Static Address: 10.10.1.30 Netmask: 255.255.255.0	Yes



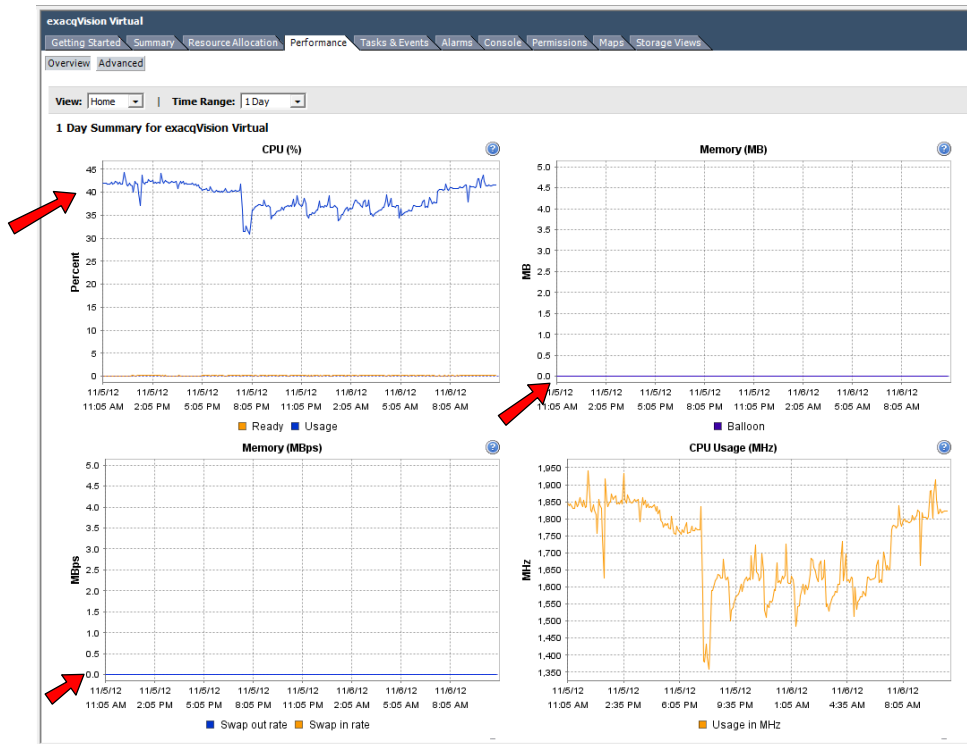
11 Performance Monitoring

Virtual Machines share host resources, so performance issues can be caused by either the virtual machine's not having enough resources or by reaching the physical resource limit on the virtual machine's host. The vSphere client provides some several tools to evaluating performance problems on both the virtual machine and host.

VM Performance Tab

There are several indicators that should be checked if the exacqVision Virtual appliance has performance issues. You must consider the CPU performance of both the virtual machine and the host. The Performance tab can provide a quick indicator of performance issues.

To monitor virtual machine performance, open the VMware client and navigate to Host and Clusters. Select the exacqVision Virtual machine in the Inventory pane, select the Performance tab, and choose the 1 Day time range. From the Overview screen, view the CPU (%) graph. If the average is above 80%, consider adding a virtual CPU to the machine by editing the machine settings.



Also note the memory balloon and swap-out rates. These indicators should be at or near zero. Values in these charts indicate memory limit placed on the virtual machine or memory overcommitment. A value of 6% or less of memory free on the host indicates overcommitment of memory resources.

Scroll down the page to view the memory percentage. The exacqVision Virtual server defaults to 2GB of RAM with a reservation of 2GB. If this value averages above 80%, consider adding memory resources to the virtual machine. If this is a small deployment and this number is consistently below 50%, you might be able to reclaim some host resources by lowering the memory reservation.

NOTE: Usage of the exacqVision Web Service will dramatically increase CPU and memory demands on the virtual machine.



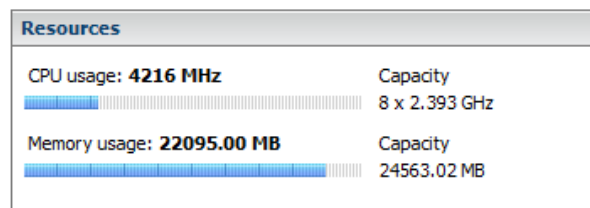
On a healthy system, Disk KBps and Network Mbps should roughly look the same. The exacqVision Virtual machine is normally one of the largest resource users of host network and datastore traffic. If network latency becomes an issue, consider adding or dedicating physical NICs for VMS network traffic.

Host Performance

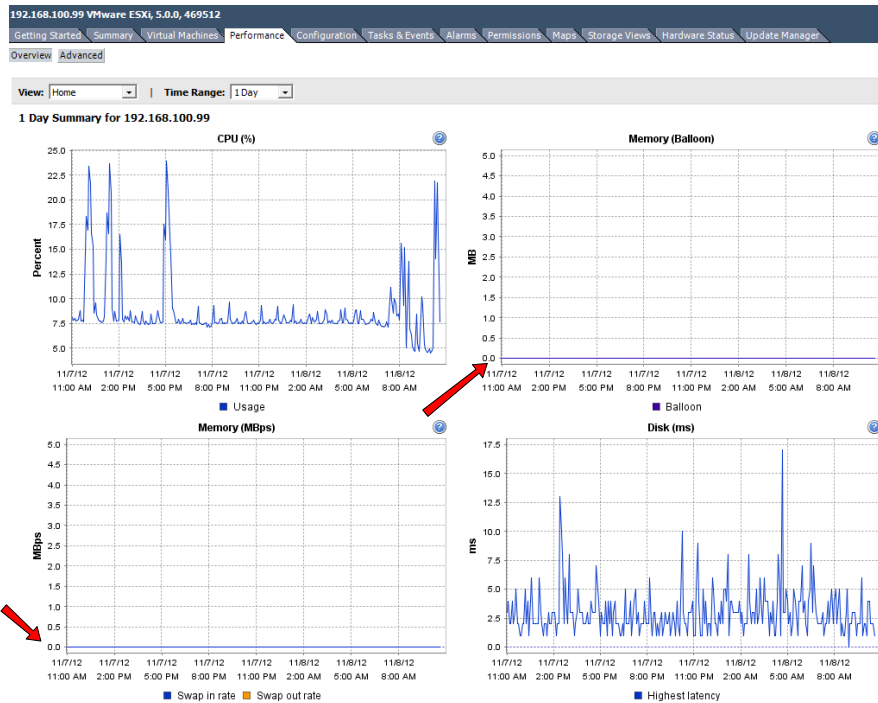
The virtual machine host must have enough memory and CPU resource for each virtual machine that is assigned to it. You can overprovision CPU and memory resources, but when the hosted virtual machine exceeds the physical resource capacity of the host, all of the virtual machines will experience performance issues as VMware pulls resources from running virtual machines.

The VMware host can quickly be assessed by opening the Hosts and Clusters view and clicking on the host in the Inventory pane. Click on the Summary tab and observe the statistics under Resources. Host resources are displayed with a bar meter and provide a quick view of current and CPU and Memory loads. Note that CPU usage should be less than 80%. Multiply the number of cores by the core GHz to get your total CPU capacity. Multiply by .8 and verify that the CPU usage number is lower:

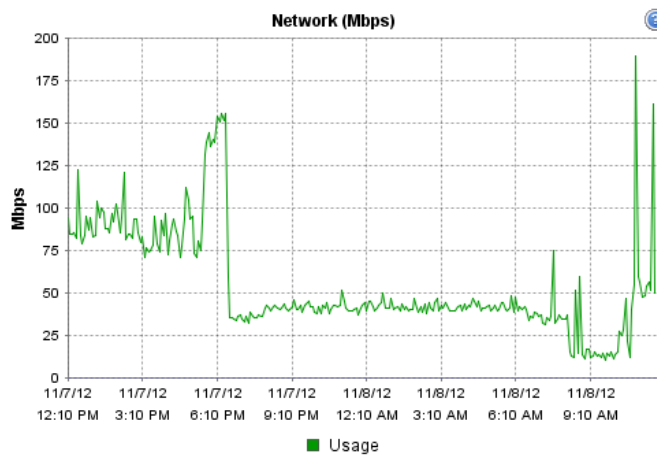
$$8 \times 2.393 \text{ GHz} = 19.144 \text{ (total GHz)} \times .8 = 15.3152 \text{ (80\% capacity)} > 4216 \text{ MHz (current Load)}$$



Observe the Memory Usage counter and verify that it is stable. If you are near your memory capacity during peak operation, consider moving virtual machines to a different host and adding memory to the host. More detailed information can be viewed by opening the Performance Tab. Some of the key indicators for memory include the Balloon and Swap charts. Both of these values should be 0, and values here indicate that the host is borrowing and using disk for memory, which negatively affects performance.



Hosts share physical network connections among virtual machines. Depending on the number of cameras recording to the VMS, significant amounts of bandwidth might be needed. Scroll to the bottom and observe the Network (MBPS) usage. This chart provides a quick overview of the average rate at which data is transmitted and received across all NIC instances connected to the host. High values here might indicate that packets are being dropped, which could indicate a bottleneck in the network.



The VMS system writes large amounts of data to datastores attached to the host. Bad disk performance often shows up as high CPU usage in your virtual machine, as the disks are not able to keep up. Disk latency is a good indicator of disk performance issues. Click on the **Advanced** button and then Chart to open the Customize Performance Chart window. Under Chart Options, choose Disk. Then choose the specific datastore object your exacqVision Virtual server is writing to. Under Counters, check Kernel Write Latency and Physical Device Command Latency. Click Apply to view the statistics.

Performance Chart Legend

Key	Object	Measurement	Rollup	Units	Latest	Maximum	Minimum	Average
■	mpx.vmhba32:C...	Physical device command latency	Average	Millisecond	0	1	0	0.05
■	mpx.vmhba32:C...	Kernel write latency	Average	Millisecond	0	1	0	0.006

The Physical Device Command Latency should be less than 20ms, and the Kernel Command Latency should be less than 3ms. Higher values indicate the datastore does not have the IOPS capacity to keep up with the load. Consider adding datastore capacity or migrating virtual machines to a different datastore to lessen the load.



12 Upgrading exacqVision to a New Release

The exacqVision Virtual appliance can be upgraded the same as any physical appliance. However, as improvements are made to the appliance, you might want to upgrade the appliance itself. You can download the latest version of exacqVision Virtual at https://www.exacq.com/products/exacqVision_virtual.php.

To preserve current video data, you must have rights to the VMware datastore where the exacqVision Virtual drives are mounted. If you have already downloaded the latest version of exacqVision Virtual to the location where your VMware is located, this entire process can be completed in less than 30 minutes.

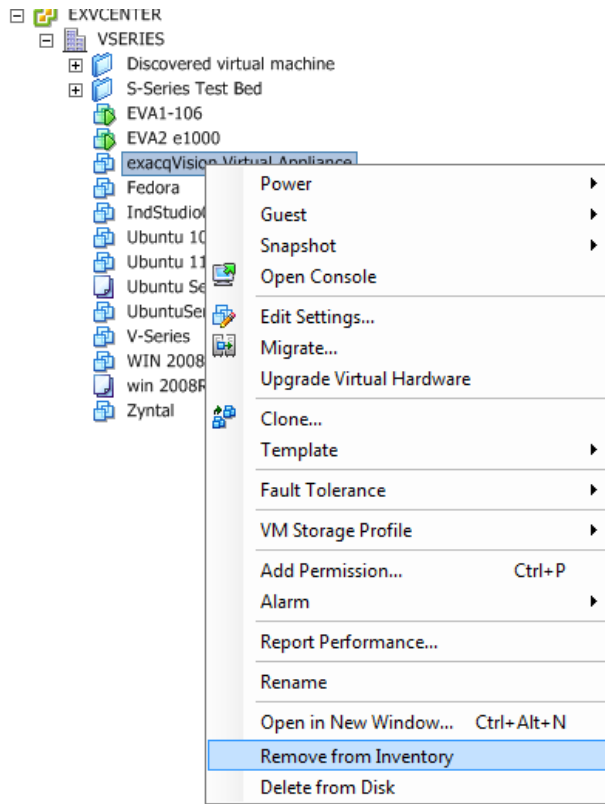
Backup Existing Configuration

1. From a remote client session, attach to the EVA and export the setting and license from the System Tab under Configure System.
2. From the vSphere client, open a remote console on the EVA. Login as admin and then run startx to open the Desktop.
3. Open the Home folder on the desktop and click the exacqscripts shortcut.
4. Run `exacqevaback.sh` in terminal mode. This utility only works with licensed exacqVision Servers.
5. Choose BACKUP from the Menu.

Removing Old Server

1. Open the vSphere Client and navigate to your exacqVision Virtual server.
2. Right-click the server and choose Open Console.
3. Log in into the console as an admin
4. Run `sudo exacq` to open the utility menu.
5. Choose option 3 to stop the exacqVision Server.
6. Close the console screen.
7. Right-click on your server and choose Power | Shut down Guest.
8. When the green arrow turns off on the VM, right-click and choose Remove from Inventory.





9. Press **Ctrl+Shift+D** to enter the Datastore view. In the navigation pane, choose the datastore recorded in line 10 of the Pre-Migration Data Sheet. Click Browse Datastore.

10. Navigate to your virtual machine and click on the Type header to sort by Provisioned Size. Delete all files and the first vm disk which will not be designated with a number. (All data drives and the export drive will be utilized in newly deploy appliance.) The directory will now become the disk drive location for the newly deployed EVA. In the example below we will save the three 100GB data drives and the 20GB export partition.

Name	Size	Provisioned Size	Type
exacqVision Virtual Appliance_...	877,568.00 KB	104,857,600.00 KB	Virtual Disk
exacqVision Virtual Appliance_...	1,842,176.00 KB	104,857,600.00 KB	Virtual Disk
exacqVision Virtual Appliance_...	1,842,176.00 KB	104,857,600.00 KB	Virtual Disk
exacqVision Virtual Appliance_...	211,968.00 KB	20,971,520.00 KB	Virtual Disk
exacqVision Virtual Appliance...	3,367,936.00 KB	10,485,760.00 KB	Virtual Disk
exacqVision Virtual Appliance...	0.00 KB		File
exacqVision Virtual Appliance...	0.03 KB		File
exacqVision Virtual Appliance...	0.28 KB		File
exacqVision Virtual Appliance...	4.25 KB		Virtual Machine
exacqVision Virtual Appliance...	8.48 KB		Non-volatile me...
vmware-1.log	206.29 KB		Virtual Machine ...
vmware.log	280.73 KB		Virtual Machine ...

11. Minimize the datastore browsers window.

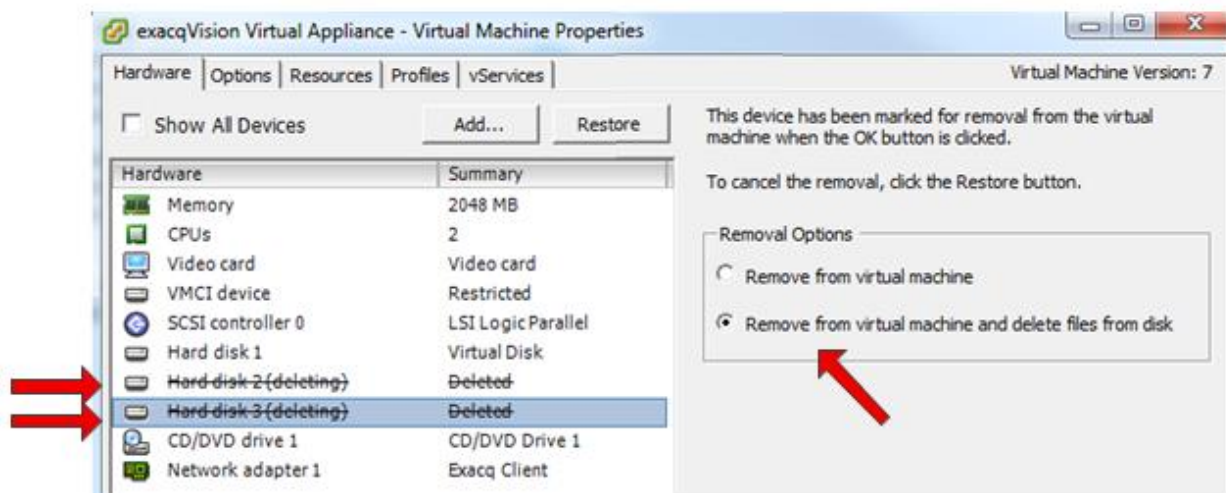


Deploy The New Server

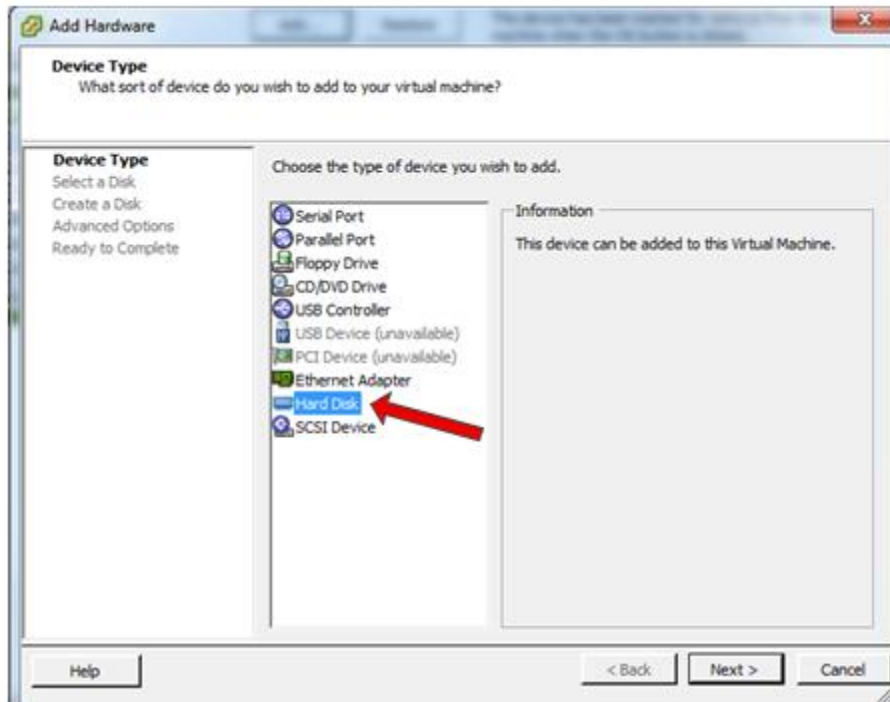
1. In the VCenter client, press **Ctrl+Shift+H** to enter the Hosts and Clusters view.
2. Select File and choose Deploy OVF Template.
3. Browse to your new downloaded exacqVision OVA file. Click Open and then **Next**.
4. On the OVF Template Details screen, click **Next**.
5. Click Accept on the End Users License Agreement, and then click **Next**.
6. Enter the exact name of your old server.
7. Browse to the same data center from line 7 of the Pre-Migration Data Sheet. Click **Next**.
8. Click on the cluster from line 7 of the Pre-Migration Data Sheet. Click **Next**.
9. Choose the Host from line 8 of the Pre-Migration Data Sheet. Click **Next**.
10. Choose the datastore from line 10 of the Pre-Migration Data Sheet. Click **Next**.
11. Choose Thin Provision and click **Next**.
12. Select the drop-down under Destination Networks and **select the Network Adapter 1 Connection Network label recorded on line 9 of the Pre-Migration Data Sheet. Click Next.**
13. Leave networking properties blank. This will deploy as DHCP. Networking properties will need to be set manually.
14. Do **not** check Power **"On After Deployment"** .Click **Finish**.

Reconfigure The New Appliance

1. Right-click the newly deployed server and choose Edit Setting.
2. Select Hard Disk 2 and 3 and click Remove.
3. When you see a list of Removal Options, select remove from Virtual Machine and Delete Files from Disk.

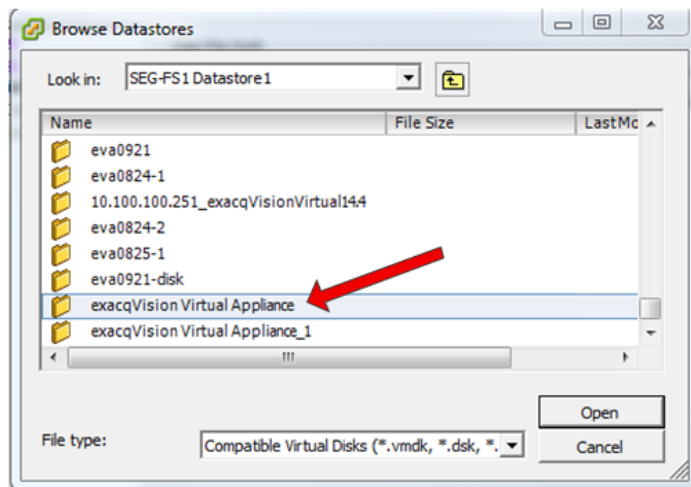


4. Click the Add button and choose Hard Disk and click **Next**.



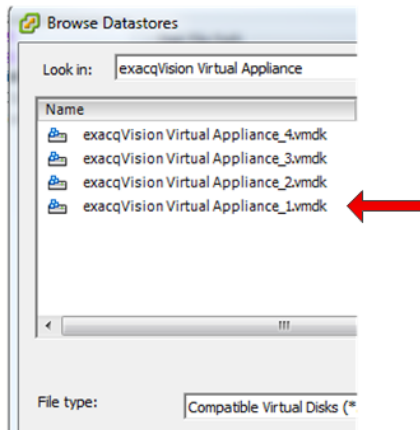
5. Choose Use and Existing virtual disk and click **Next**.

6. Click the Browse button and navigate to the Datastore recorded in item 10 of the worksheet. This will be the name of your original VM. The newly deployed EVA will have the same name with the addition of an underscore 1 at the end of the name.

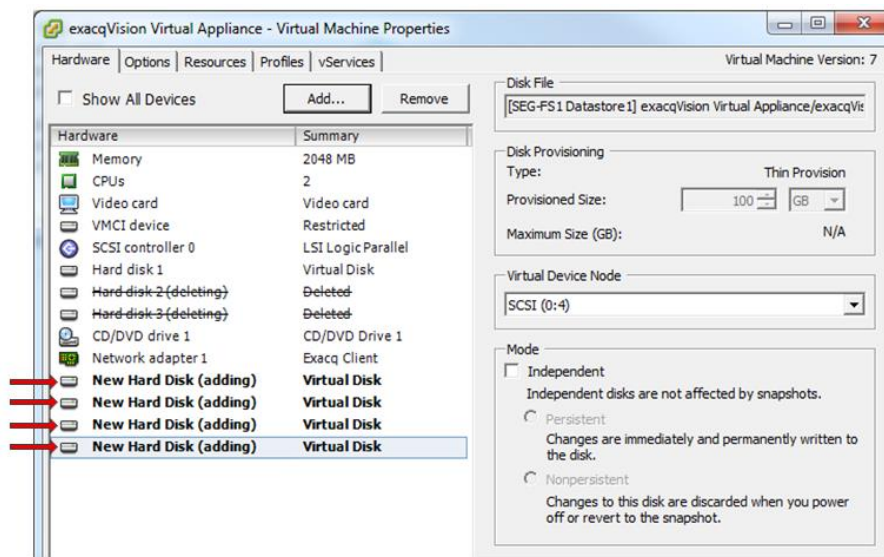


7. Choose the disk ending in 1.vmdk and click OK. This will be the export drive. Click **Next**. Note the Virtual Device Node should be SCSI (0:1). Click next to finish the wizard.





8. Repeat the Add wizard for each of the data disk adding each disk in sequence. In our example we will add disk 2 next followed by disk 3 and 4.



9. Click on Memory and change it to the value from line 9 of the Pre-Migration Data Sheet. Click Next.
10. Click on CPUs and change it to the value from line 9 of the Pre-Migration Data Sheet. Click Next.
11. Click on Network Adapter. On the right side, under MAC Address, click Manual. Enter the last three octets from the address recorded on line 3 of the Pre-Migration Data Sheet. Click **Next**.

NOTE: Be sure to put a colon (:) between each octet. Do not erase the first three octets.

12. Click the Resource tab and change values for CPU and Memory reservations to the values from line 11 of the Pre-Migration Data Sheet.
13. Click OK to close the Virtual Server Properties. After it is reconfigured, right-click on the virtual server, select Power, Power On. Your server will copy all saved information and remount all data drives.
14. Once the system is up, open a console from the VMware client and log in as admin with the password admin256
15. If your network doesn't have a DHCP reservation for the primary network address, run /exacqscripts/Vaminet.sh to set the fixed IP address for Port number 0
16. If you have a second network adapter, right click your Virtual Server and choose edit. Click Add. Choose Ethernet Adapter and click next. Change the Adapter Type to Flexible adapter. In the drop-down list under Network Connection, select the network listed for Eth1 from line 9 of the Pre-Migration Data Sheet. Click Next and Finish. Click OK to save the settings. Run the VamiNet.sh script to address the addition adapter.
17. Right-click on the Appliance and choose Open Console. Log in to the console using the admin account.

18. In exacqVision Client, select the Config (Setup) icon and browse to the server, which should have reconnected automatically. The version number in the right pane should be incremented to the latest EDVR major release version.
19. Select System. Verify that your license and system name are correct.
20. Select the Date/Time tab and verify that the Time Zone is correct.
21. Select the Network tab and verify that the network setting for each network interface is correct.
22. Select the Active Directory/LDAP tab and verify the settings are correct (if applicable).
23. Select the Storage icon and verify that all the disks are displayed and listed as Healthy.
24. Select Add IP Cameras and verify that all the cameras have reconnected.

The exacqevaback script can also be used to delete a current backup, restore from a current backup, or create a new backup at any time. It is a good practice to make a backup of your system configuration whenever your system undergoes changes.

The exacqevaback script does not capture any direct I/O settings or directly configured settings to external iSCSI or NFS storage configured within the virtual appliance.



13 Pre-Migration Data Sheet

Use this sheet to record important information regarding your server before migration. For the Virtual Appliance hardware setting, note any changes that from the default (shown in parentheses).

1. Open exacqVision client and connect to the server. System in the navigation Pane. Click the Export button and save your configuration.
2. Under License, click the Export button and save your license file. Record the last three octets of the license MAC address under the license number.

MAC Address - _____ - _____ - _____ - _____ - _____ - _____

3. Select the Network tab and record the network settings.

	ETH 0	ETH 1
IP Address		
Net mask		
Gateway		
Primary DNS		

4. Select the Date/Time tab and record: **Time Zone** _____ **Time Server** _____

5. Select the Active Directory/LDAP tab and record (if applicable):

LDAP Server Address _____ **LDAP Schema** _____

LDAP Base DN _____

LDAP Binding DN _____

6. Open the VMware client and navigate to the EVA you want to upgrade. Note the version number of your appliance which can be found in the summary tab at the top of the General box.

Current Version Number _____

7. Open your vSphere Client and navigate to Hosts and Clusters (**CTRL+SHIFT+H**). Locate your server and record:

VM Name  _____

Data Center  _____ **Cluster**  _____

8. Click on the Servers Summary tab and record the host:



Host IP Address _____-_____-_____

9. In the navigation pane, locate your server, right-click, and choose Edit Settings. Under Hardware record:

Memory (2048) _____

CPU:

Number Virtual Sockets (2) _____ Number of cores per Socket (1) _____

Network Adapter1 Network Connection Network Label: _____

Network Adapter2 Network Connection Network Label: _____

10. Click Hard Disk 1 and note the Data Store under Disk File [in brackets]

Data Store _____

11. Click the resource tab and record:

CPU

Shares: (Normal) _____ Reservation: (2000) _____ Limit: (Unlimited) _____

Memory

Shares: (Normal) _____ Reservation: (2048) _____ Limit: (Unlimited) _____

