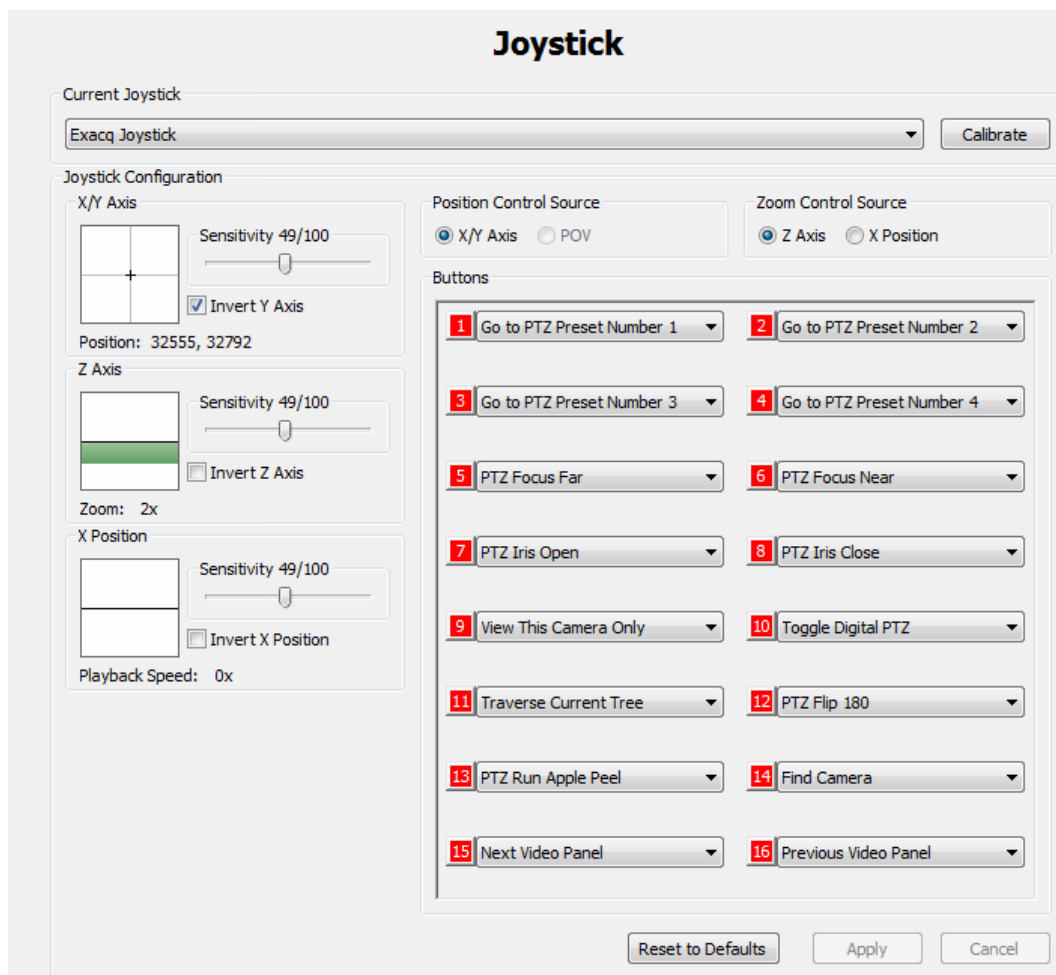


This document is supplemental to the quick start guide and the user manual shipped with your system. Both documents can be downloaded at <https://www.exacq.com/support/specsheets.html>.

Most systems can be configured with the following steps:

1. Install exacqVision Client.
2. Plug the exacqVision Surveillance Keyboard into an available USB port.
3. In exacqVision Client, browse to the Joystick Setup page under Client Setup in the site tree in exacqVision Client. The joystick is listed as "Exacq Joystick" in the drop-down list.
4. Configure the Position and Zoom controls and calibrate as desired.
5. The keyboard buttons map with the following defaults (see the following page for a visual button mapping):



6. Press each keyboard button to test the mapping. If configured correctly, each red button changes to green when the mapped button is pressed.
7. You can change button actions as desired by selecting them from the drop-down lists. Click Apply when finished.

## exacqVision Surveillance Keyboard Button Mapping



**NOTE:** For best results, cameras should be named starting with a number so that you can easily call a camera by pressing **star + number + pound**. For example, a camera named “8-Hallway” could be called by pressing **\*8#**, and a camera named “15-Parking” could be called by pressing **\*15#**.