

Entrapass exacqVision Client Integration

13. Launch the exacqVision Client. Select **Add Security Integration**



14. Click **New**

Enter loopback IP, **127.0.0.1**
 Username: **admin** (default)
 Password: **admin256** (default)



Add Security Integration Device

Type: Kantech

Hostname/IP Address: 127.0.0.1

Port: 8801

Username: admin

Password: *****

Apply Cancel

16. Select a camera to configure for **Associations**

15. A new entry has been added. Click on this entry.

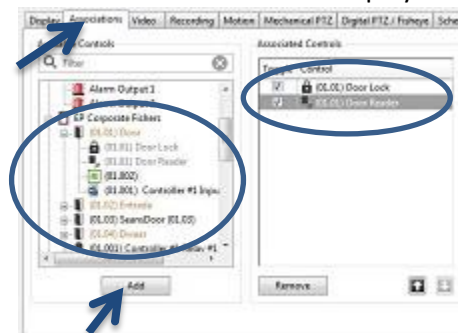


This example shows the controls and statuses of a KT400.

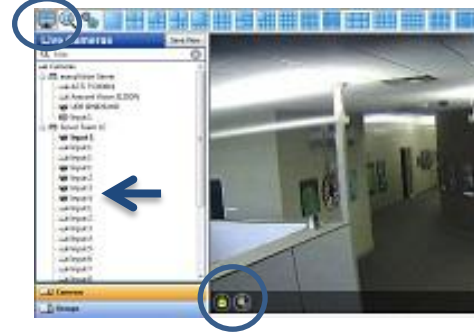
Name	Type	Actions	Status
0100 Door	Door	Arm	Normal/Door Stowed
0100 DoorLock	Lock	Lock	Armed
0100 DoorReader	Reader	Disable Reader	Reader Activated
0100 Reader	Reader	System IO	Normal
0100 Controller #1 Input #1	Input	System Input	Normal
0100 Gate	Door	Arm	Normal/Door Stowed
0100 GateLock	Lock	Lock	Armed
0100 GateReader	Reader	Disable Reader	Reader Activated
0100 Reader	Reader	System IO	Normal
0100 Controller #1 Input #6	Input	System Input	Normal
0100 Controller #1 Input #5	Input	System Input	Normal
0100 Sensor #1 (0100)	Door	Arm	Normal
0100 Sensor #2 (0100)	Lock	Unlock	Locked
0100 Sensor #3 (0100)	Reader	Disable Reader	Reader Activated
0100 Sensor #4 (0100)	Reader	System IO	Normal
0100 Controller #1 Input #9	Input	System Input	Normal
0100 Door	Door	Arm	Normal
0100 DoorLock	Lock	Lock	Armed



17. Click on the **Associations** tab. Navigate into the Kantech node to see available associations. Click **Add** to add them to the list to be displayed.



18. Click **Live View** from toolbar and select the camera you just configured in the previous step. Note the controls and statuses overlay.



Saves time & money

Kantech EntraPass Access Control pre-loaded on exacqVision recorders

Why Kantech?

Kantech has a 30 year history of providing innovative access control solutions in many markets including small business, commercial buildings, healthcare, education and financial institutions. See for yourself at: <http://www.kantech.com/Support/Videos.aspx>

Provide your customers with a cost effective, tightly integrated complete security solution. Combining EntraPass and exacqVision software produces a rich integrated access control and video experience. Save money with pre-licensed Corporate edition on a single security server.

How do I use Kantech Onboard?

If you're a Kantech corporate dealer, simply follow the instructions on the next page!

If you're not a Kantech dealer, please contact us. Once trained, you can activate the EntraPass software on this recorder.

How do I become a Kantech Dealer?

Contact Kantech sales and we'll walk you through the simple application process. You will need at least one trained technician to become a dealer.

North America: +1 888-526-8324
 Europe, ME, Africa: +44 208 750 5670
 Asia Pacific: + 65 6319 9843
 Email: kantechsales@tycoint.com.

By becoming a Kantech Corporate dealer, you will join an exclusive club of dealers with access to all the Kantech hardware and EntraPass Corporate Edition software along with Sales and Technical support resources.

How do I get EntraPass support from Kantech?

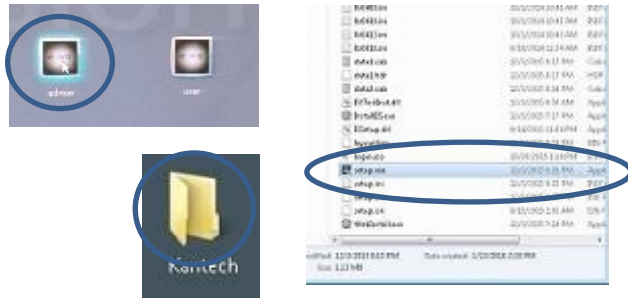
North America: +1 800-507-6268 option 4 then 4
kantechsupport@tycoint.com
 Europe, ME, Africa: +31 475 352 722
EMEA-AccessControl-Support@tycoint.com
 Asia Pacific: + 86 21-60230650
APAC-Support@tycoint.com



Install and Register Entrapass CE

1. Log in to the admin account on the recorder.

Password: **admin256** (default). Open the Kantech folder and the EPCE X.XX.XXX folder and launch the Setup.exe



3. Allow restart

During reboot, there will be a long pause showing a blue screen while Entrapass is configured. Remember to log out of the user account and log in to the admin account.



DO NOT use this icon To set up EntrapassWeb!



5. Select **Options | Registration**

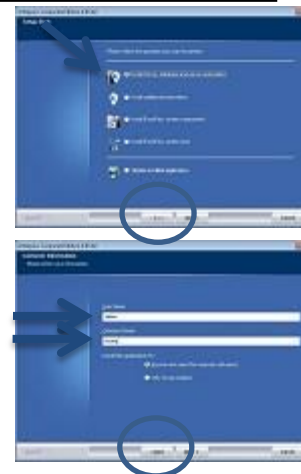


Click **Temporary Password in Use**, Click to Register



2. Click Next

1. Select Install Server, Database and Server Workstation
2. Accept EULA
3. Enter UserName : **admin** (or Windows user account) Enter any Company Name (this will show up on reports generated by Entrapass)
4. Accept Default Path
5. Click Install



4. Launch Workstation

UserName: **kantech** and temporary password shown



6. A **Kantech Certified Technician** must perform the registration process. Use the information supplied to do so and then enter the confirmation code as shown. Then click OK.



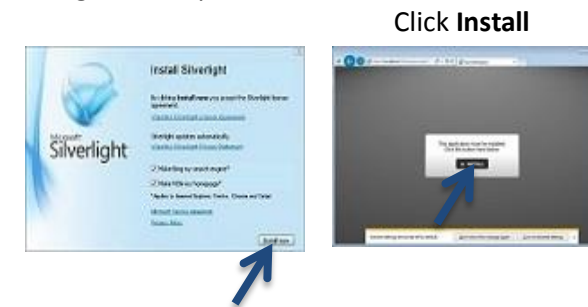
Set up EntrapassWeb and Configure backup

7. Open the Kantech folder and launch the EntrapassWeb Client Setup shortcut.



9. Click **Install Now**

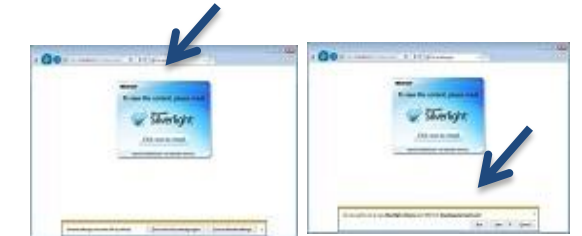
Defaults can be accepted for the rest of the Silverlight install procedure



11. You are now logged in to the EntrapassWeb. To set up EntrapassWeb from a remote machine you will need to browse to <http://<ipaddress>:81/entrapassweb>



8. Click to install Silverlight Click **Run** when prompted by browser



10. Click **Install**

Enter credentials Username: **admin** Password: **admin256**



Ensure it reads **"Powered by Kantech"** here

12. Backups of the Kantech system should be targeted off of the exacqVision recorder. Launch Workstation and navigate to **Options | Backup Scheduler**. Select **"Specific folder"** to browse to a remote location or removable storage device.

