

exacqVision Edge & Edge+ Full-Featured VMS Software Running on an IP Camera



• Perfect IP Video Surveillance Solution

- Full-featured VMS software installed directly on a compatible camera
- Easy and cost-effective way to deploy high-definition IP video
- View 10 exacqVision Edge cameras or over 1,000 exacqVision Edge+ simultaneously with included client

• Ideal exacqVision Edge/Edge+ Applications

- **Small Systems** – Save server/installation costs on small video surveillance systems
- **Fast Deployment** – Completely pre-configured video system prior to installation; no server installation required.
- **High Reliability** – No single server failure stops all video recording
- **Unreliable Networks** – Ideal in environments with unreliable wireless or WAN connectivity - camera records even when the network is down
- **Independent Recording** – Ideal to monitor remote server rooms independently of building surveillance recording
- **Low Density Locations** – Ideal for remote locations with low camera counts

• View Live and Recorded Video Anywhere

- Included client software runs on Windows, Linux or Mac computers
- Install free web service software on a PC for web browser and mobile app access
- Powerful thumbnail and timeline search tools
- Onscreen display of motion and alarm events
- Instant replay of video and audio events with exacqReplay
- Export video in open-standard video formats or as a self-contained player with tamper protection

• System Continues to Meet Your Growing Needs

- Get powerful video management features today, and add more tomorrow through our included, rapid software releases
- Add new exacqVision Edge/Edge+ cameras as needed
- Scalable as part of a full exacqVision recorder solution
- Easy to upgrade to exacqVision Edge+ for more than 10 simultaneous cameras, powerful enterprise features and network storage options

• exacqVision Edge+ Features:

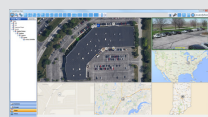
- Archiving and extended storage
- Multi-streaming
- Multiple camera export
- Bookmarking and case management
- Third-party integrations
- Enterprise Management
- Single and nested mapping
- Custom user groups
- Remote system monitoring with email notifications
- Point-of-sale and ATM search
- SmartSearch
- Event Linking and notifications
- Camera groups
- Audit trail
- Two-way audio
- Time lapse recording

SYSTEM	EDGE	EDGE+
Maximum simultaneous cameras per client	10	1,000
Free Windows, Linux and Mac clients	✓	✓
Browser-based viewing of live/stored video	with installation of free PC web service software	with installation of free PC web service software
Tablet/smartphone based viewing of live/stored video	with installation of free PC web service software on a separate computer	with installation of free PC web service software on a separate computer
Client-side dewarp of fisheye/panoramic cameras	camera dependent	camera dependent
Client bandwidth throttling	✓	✓
Pre-post alarm recording	✓	✓
Soft Triggers	✓	✓
Per-camera min/max retention		✓
Audit trail		✓
Custom user groups		✓
Third-party integrations (e.g. access control)		✓
Email notification for system health events		✓
exacqVision surveillance keyboard support		✓
Enterprise camera management		✓
LIVE VIEW	EDGE	EDGE+
View cameras on multiple monitors	✓	✓
PTZ control and presets	✓	✓
Digital PTZ control and presets	✓	✓
Motion and alarm indication	✓	✓
Event linking on video, serial and health events		✓
Camera groups		✓
Multi-streaming		✓
Event notifications		✓
Maps		✓
Two-way audio		✓
Hierarchical maps for fast camera navigation		✓
SEARCH, PLAYBACK, EXPORT & ARCHIVE	EDGE	EDGE+
exacqReplay instant replay	✓	✓
Thumbnail & timeline event search	✓	✓
Multi-camera playback	✓	✓
Export to DVD	✓	✓
Export to .AVI, .MOV or .EXE file	✓	✓
POS and ATM serial text search		✓
Multiple camera export		✓
Time-lapse recording		✓
Archiving		✓
Smart search		✓
Bookmarking		✓
Case management		✓

Related Products



exacqVision NVR



exacqVision VMS Software



Exacq Mobile App



exacqVision Keyboard

www.exacq.com