

1 Requirements

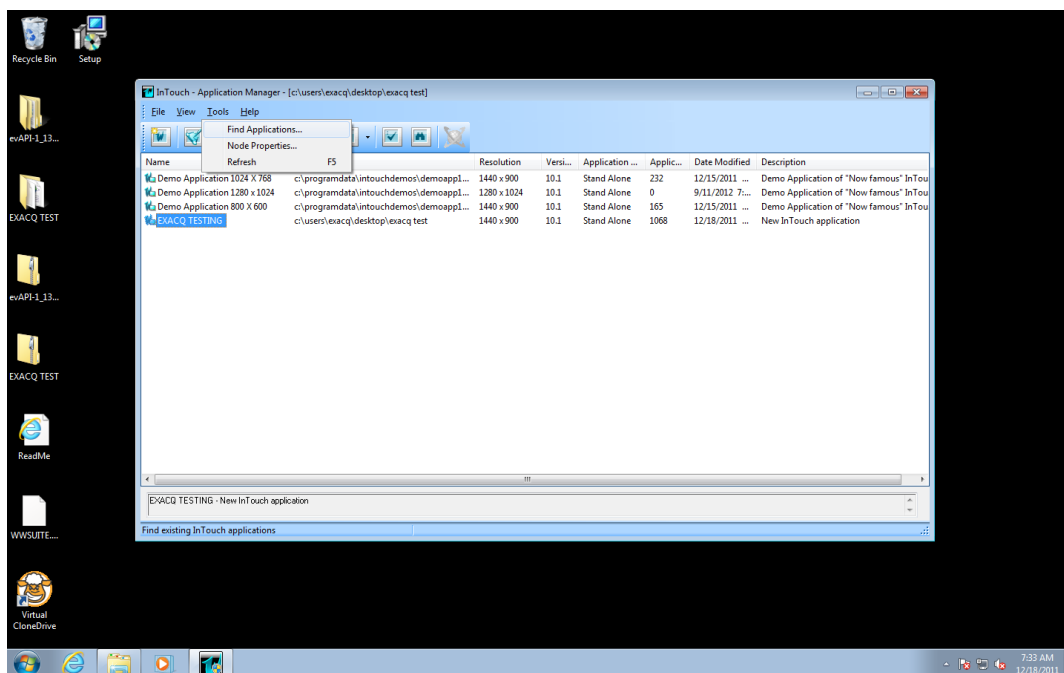
Wonderware InTouch integration works with any exacqVision system. This document assumes that the exacqVision server and Wonderware InTouch server are both installed and running.

Minimum software requirements:

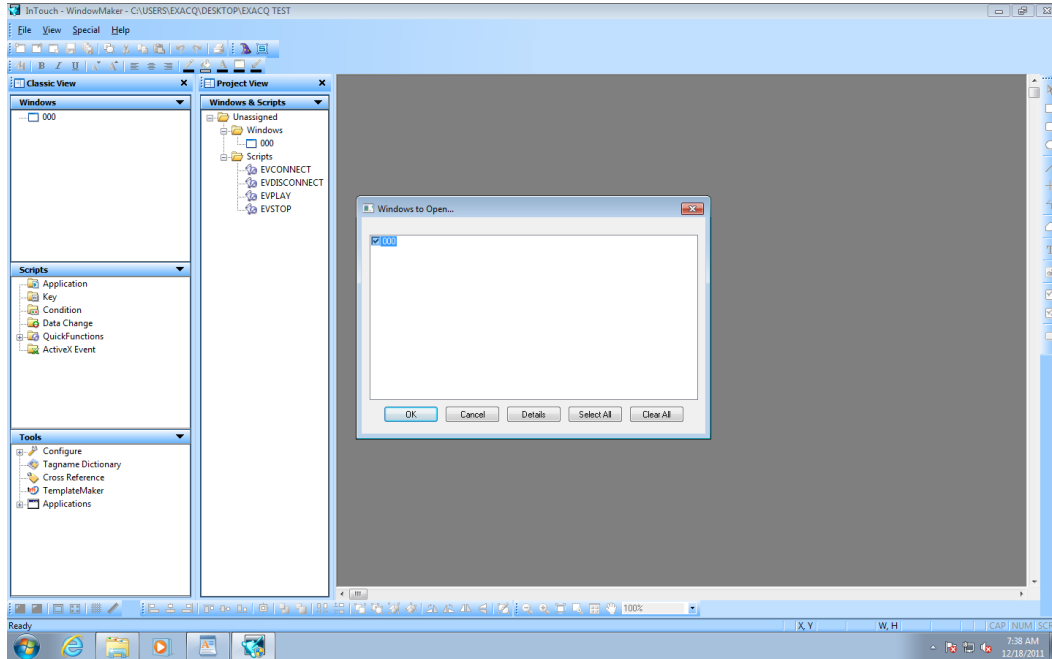
- exacqVision version 4.2 or later
- Wonderware InTouch version 10.1 or later

2 Configuration

1. Obtain the IP address of the exacqVision server.
2. On the exacqVision server, create a username and password with Power User privileges. Wonderware InTouch software will log in to the exacqVision server with this account to request video.
3. On the exacqVision server, open Live view, right-click on the video you want to import into Wonderware InTouch, and obtain the camera ID.
4. Send an email to evapi_support@exacq.com requesting the exacqVision–InTouch integration project.
5. Place the evAPI.dll and evAPIX.dll files into the Wonderware InTouch install directory.
6. Open Command Prompt with Administrator privileges and browse to the Wonderware InTouch directory.
7. Type **regsvr32 evAPIX.dll** and press Enter. You should receive a message indicating that it registered successfully.
8. In the InTouch application manager, select the **Tools** menu and then **Find Applications**.
9. Browse to the exacqVision–InTouch integration project and select it. The Exacq project should now appear in the InTouch Application Manager window.
10. Double-click the Exacq project.



11. When InTouch WindowMaker opens, **select 000** and click OK.

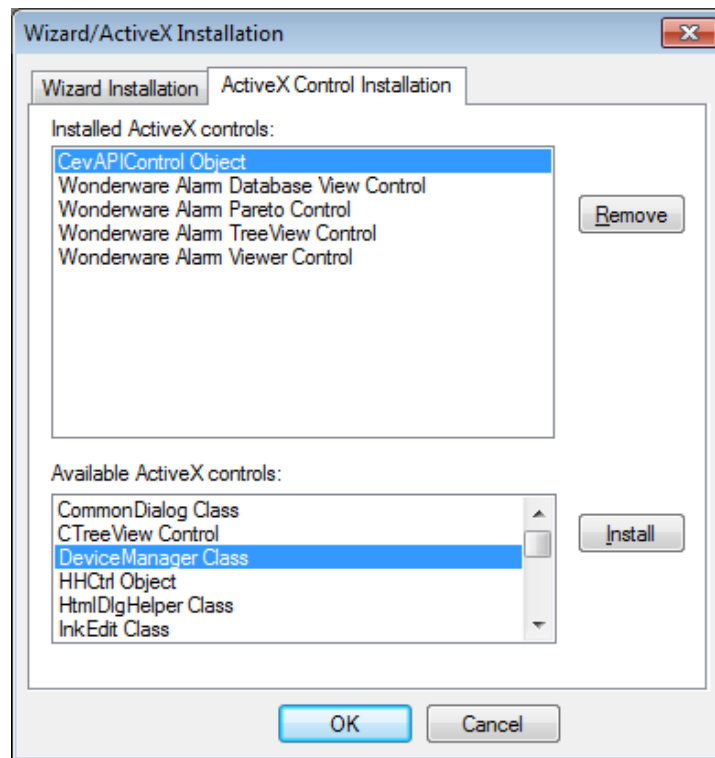


12. Select **Special**, then **Configure**, and then **Wizard/ActiveX Installation**.

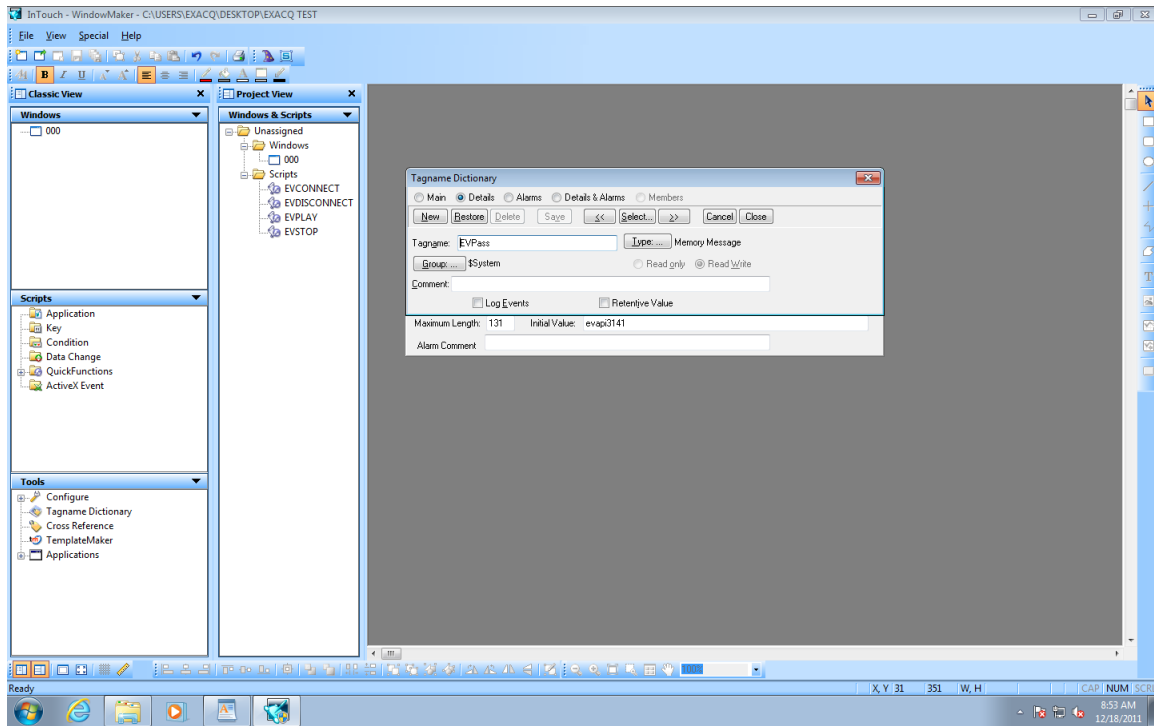
13. In the Wizard/ActiveX Installation dialog box, select the **ActiveX Control Installation** tab.

14. Select **CevAPIControl Object** and **Click Install**. This moves **CevAPIControl Object** into the Installed ActiveX controls area.

15. Click OK.



16. In the InTouch WindowMaker **Tools** Box, right-click on **Tagname Dictionary**.
17. Use the << or >> buttons to go to the following items:
 - a. **EVCamera** should be the camera ID you obtained in step 3. Click Save.
 - b. **EVHost** should be the IP address of the exacqVision server obtained in step 1. Click Save.
 - c. **EVPort** should be 22609. Click Save.
 - d. **EVUser** should be the username obtained in step 2. Click Save.
 - e. **EVPass** should be the password obtained in step 2. Click Save.
 - f. Click Close.



18. In the InTouch WindowMaker File menu, select **WindowViewer**.
19. Select **000** and click OK. The Wonderware InTouch WindowViewer then displays the "000" box.
20. Click **Connect** then **Play**.
21. The exacqVision camera ID you configured should now be displaying live video.

The following illustration shows the exacqVision camera displaying live video in Wonderware InTouch:

