

Overview

ExacqVision can receive serial data from the AlphaCom server in Stentofon intercom systems, allowing a wide range of options for event handling. This could be in the form of precisely chosen string replacements to format raw data into conversationally readable text in the exacqVision client. Alternatively, the AlphaPro software provided by Zenitel allows users to customize macros to control event output. This method is more organized and less time consuming to configure. This document will focus on that example.

Requirements

- Stentofon Hardware: various audio devices ([products page](#))
- AlphaCom audio server
- AlphaCom License
- AlphaPro software
- ExacqVision Server and Client software. (v19.12 or later)
- ExacqVision License: Professional or Enterprise level license. ([more info here](#))

Recent Test Environment

- AlphaPro software v11.6.3.8
- ExacqVision Server&Client v19.12
- AlphaCom XE1 – firmware v12.5.3.4
- Stentofon Telephone
- Stentofon Turbine intercoms

Stentofon & AlphaCom System Installation/Setup

The AlphaCom system and all related hardware requires a careful installation/configuration process that will NOT be fully detailed here.

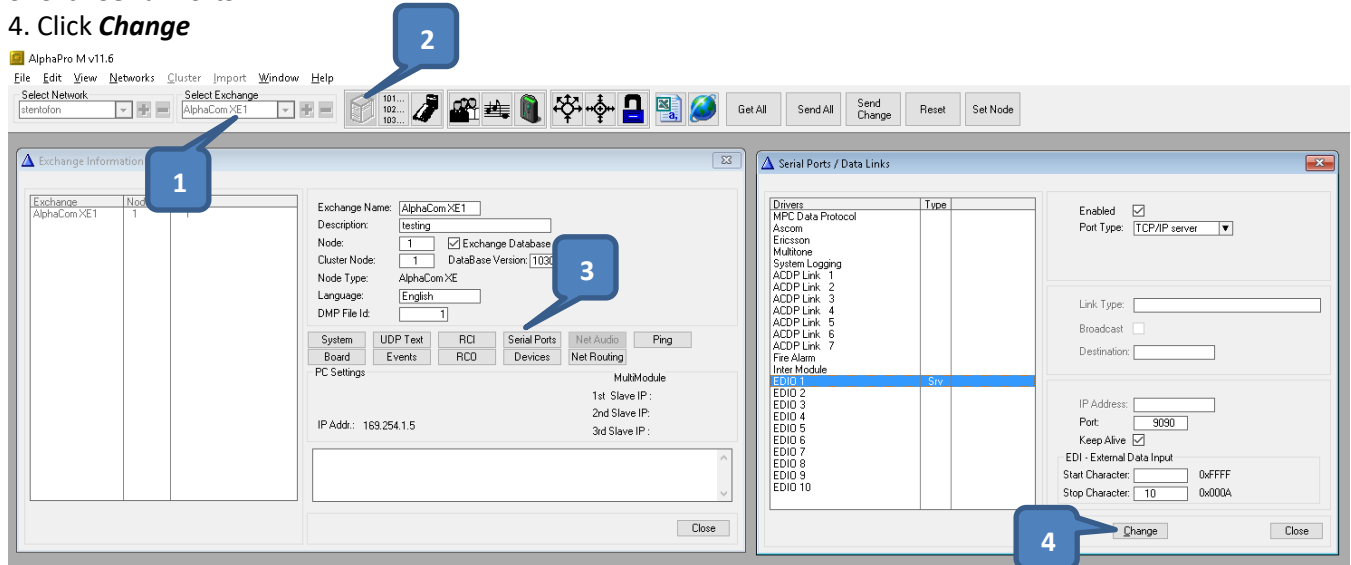
For an exhaustive library of documentation, guides, training resources and more, please explore [Zenitel's Customer Service resources](#) for assistance before continuing with the steps in this guide.



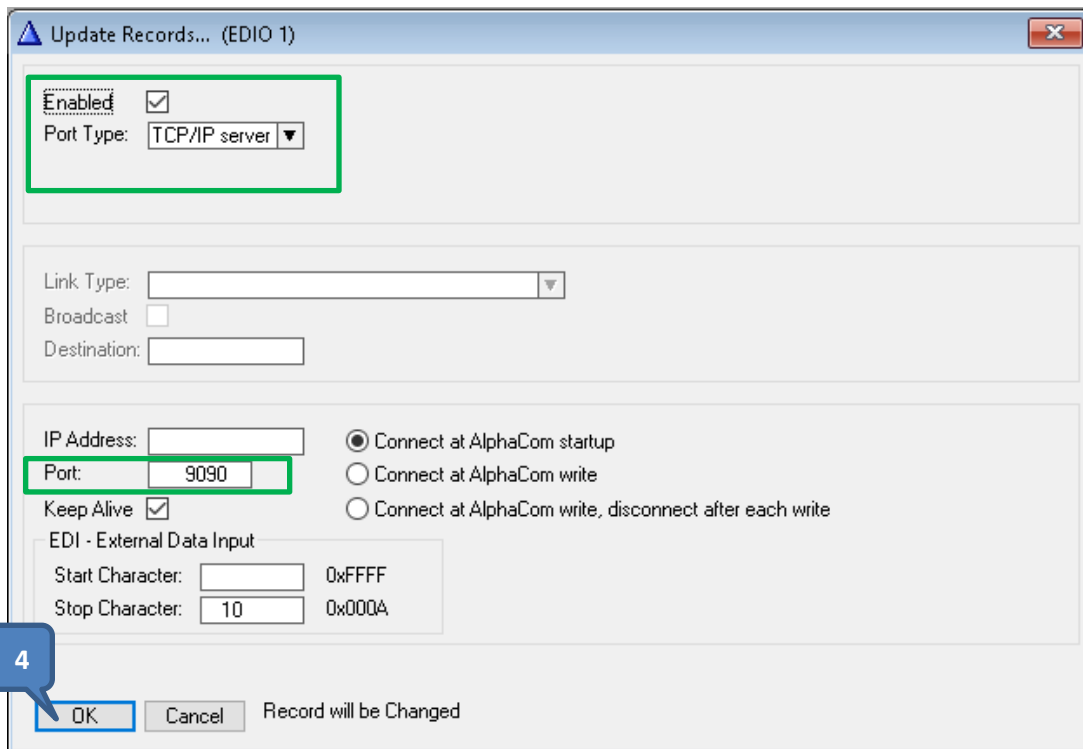
AlphaPro Configuration for Serial Data Output

Once your devices are all communicating together as desired, it is time to send that event data out to exacqVision.

1. In the AlphaPro software suite, select your network and exchange (server) from the drop down menus.
2. Click the **Exchange & System** icon
3. Click **Serial Ports**
4. Click **Change**

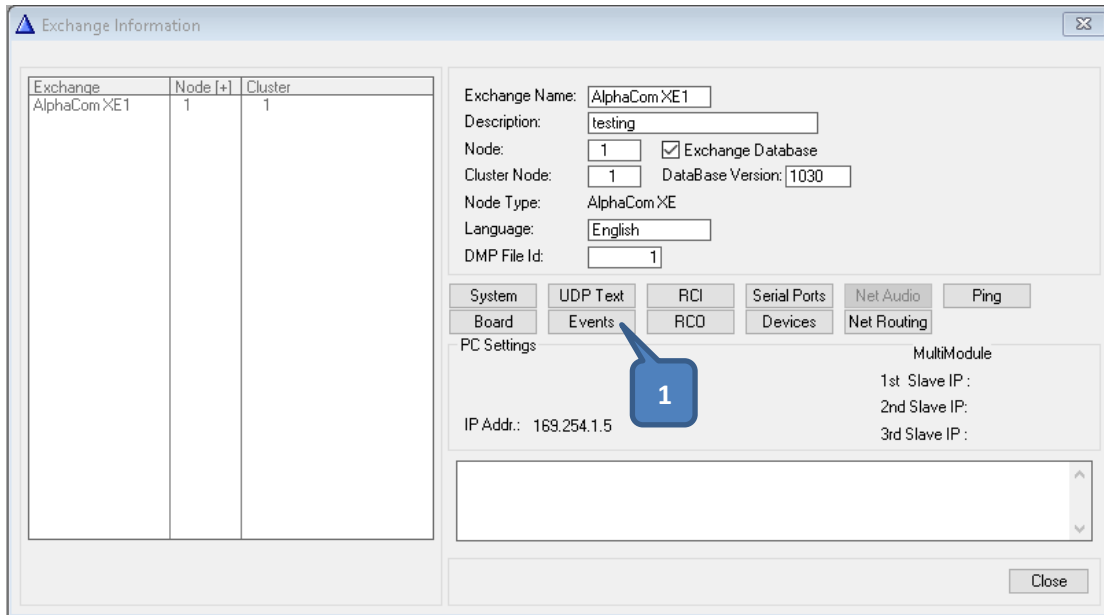


5. Configure an **EDIO Port** as shown below. Create a **Port Number** that will be used to communicate with exacqVision (configured later). Then Click OK. Then close this menu.



AlphaPro Events

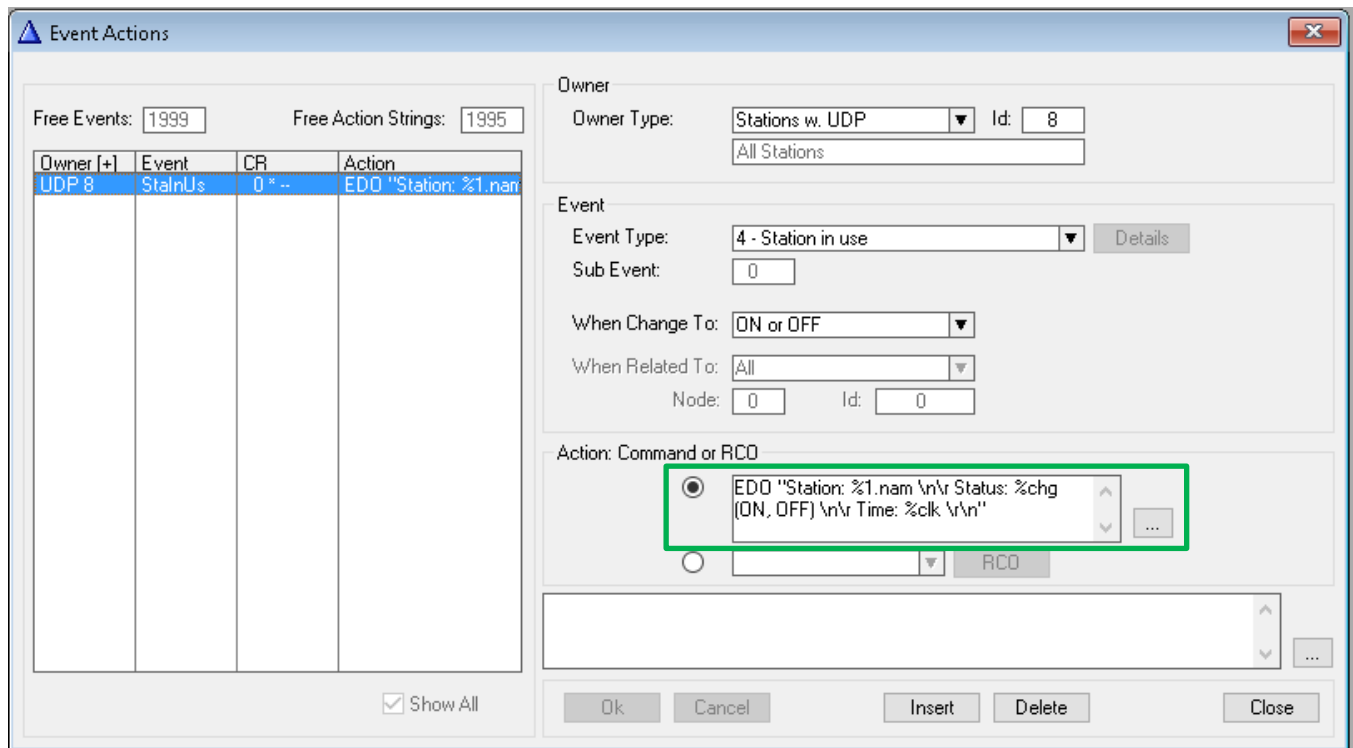
1. Open the *Events* configuration page.



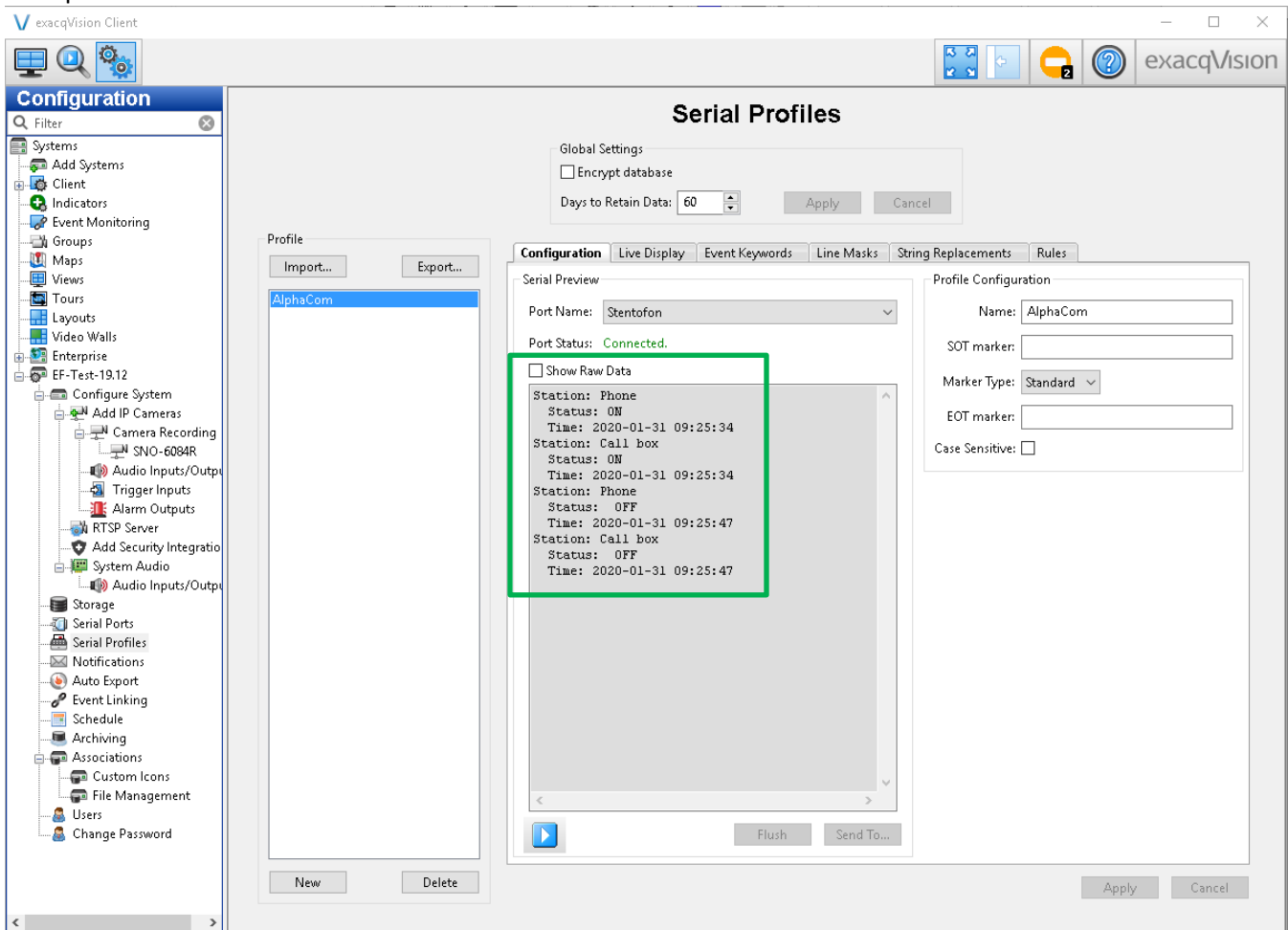
2. To configure event output to alert on any station (device) on the network, follow the example below for Owner Type and Event Type.

3. In the “Action: Command or RCO” section, create a macro to control the appearance and content of event data in exacqVision.

For more information on macro formatting for output messages, see the [Zenitel Wiki Page](#).



The macro shown in the “Action: Command or RCO” section of the screenshot above will look like this in exacqVision.



In the next section you will configure a serial profile and serial port for exacqVision to receive this data.

IMPORTANT: Once you have made the changes you want in **AlphaPro**, be sure to click **Send Change**. If you have more than one exchange configured, a drop down box will appear. Select the exchange that the port change is to be applied to. Once that process is finished, click **Get All** to make sure this information is fully communicated between the database table and the AlphaCom server.

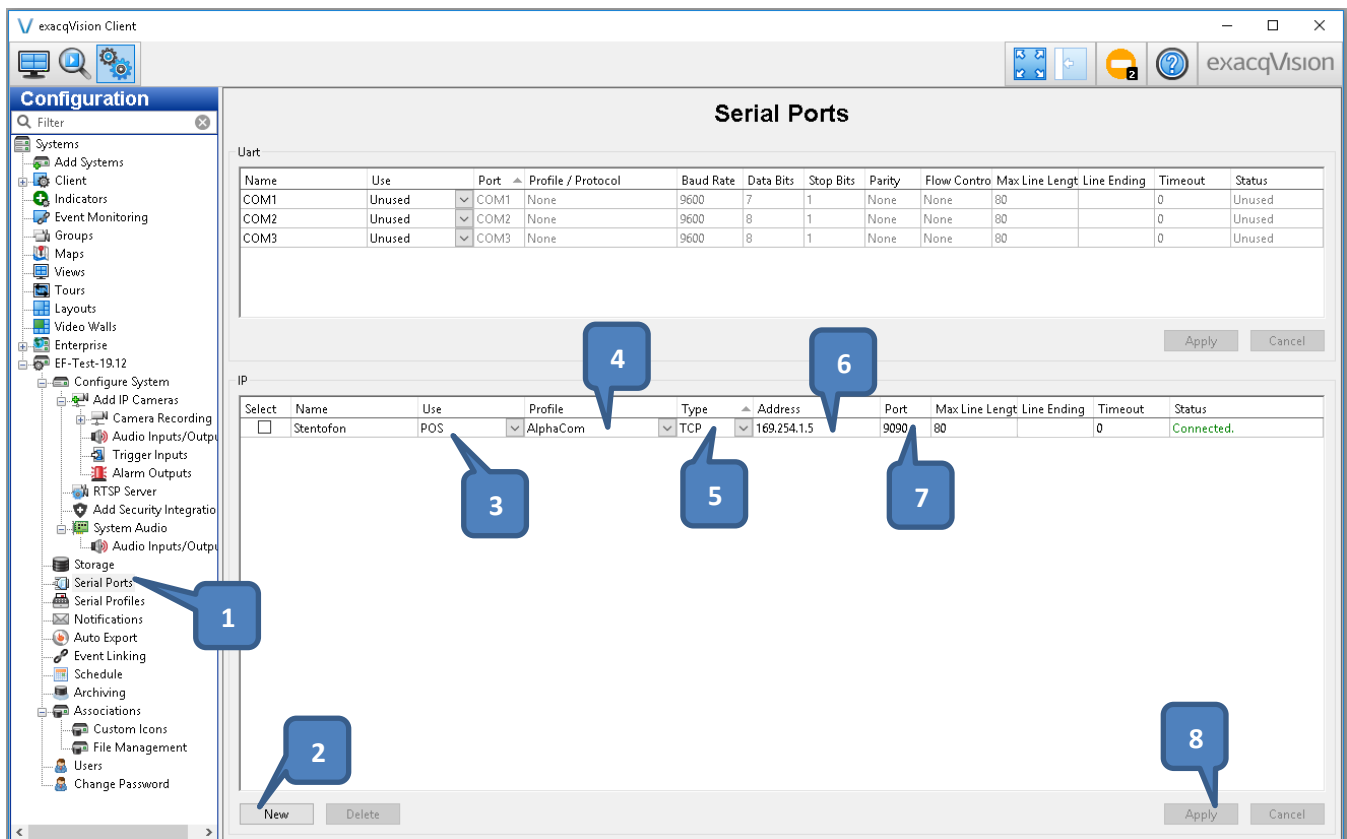
exacqVision Serial Profile Configuration

To create a Serial Profile, navigate to the section of the exacqVision Client shown in the screenshot above.

1. Click **New** in the bottom left corner.
2. Create a name for your profile that will be used on the Serial Ports page.
3. Though SOT and EOT can be used here, for this example they are unnecessary.
4. Select **Standard** from the Marker Type section.
5. Click **Apply**

ExacqVision Serial Port Configuration

1. Click on **Serial Ports** in the left navigation tree.
2. Click the **New** button in the bottom left corner, and enter a Name for the Serial Port.
3. Select **POS** from the Use dropdown menu.
4. Select the **Profile created for AlphaCom** in the Profile dropdown menu.
5. Select **TCP Listener** from the type dropdown menu.
6. Enter the **IP Address of the AlphaCom Server** in the Address field.
7. Enter the configured **port number** into the Port field. For this example, 9090 was used.
8. Click **Apply**.



Keywords Configuration

In order to associate AlphaCom Events to ExacqVision actions, you must first create a set of Keywords. These keywords must identically match the output received from the AlphaCom server, as indicated in the previous section.

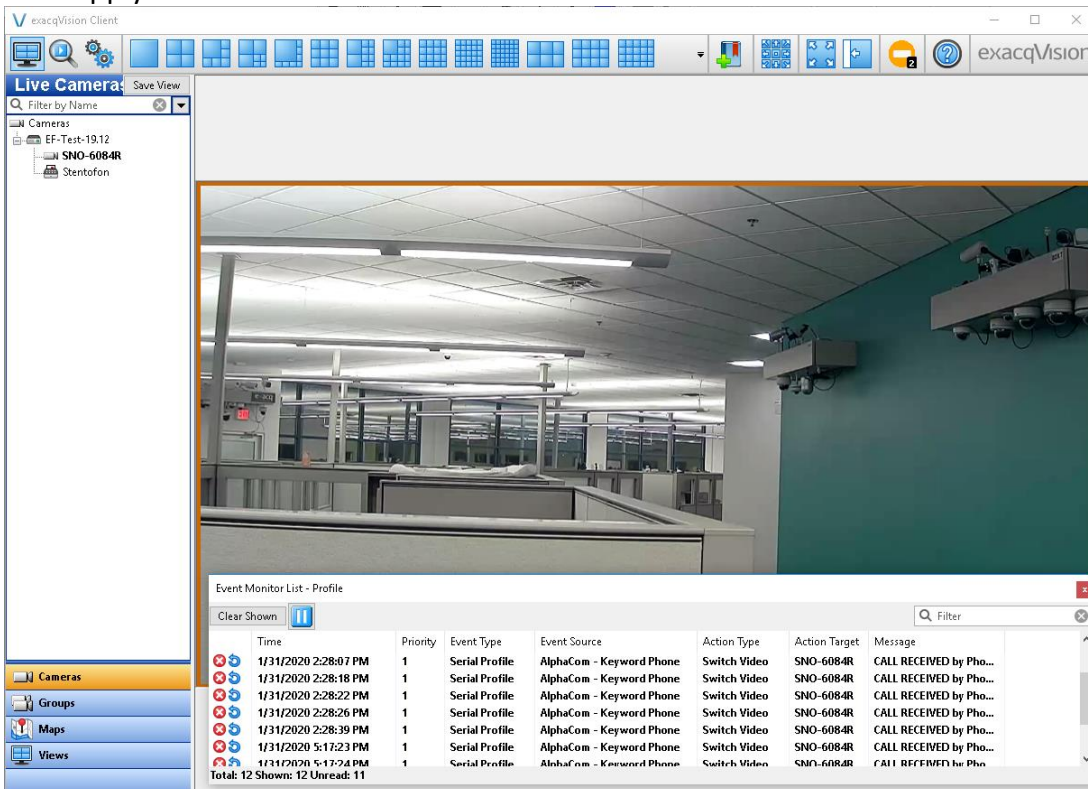
Please note that the string values are inherently case sensitive.

1. Click on the **Event Keywords** tab in the Serial Profiles page, then click **New**
2. Enter the event **string value** for each of the individual AlphaCom Events that have been defined. (example: "Phone")
3. Click **Apply** to save the Keywords.

exacqVision Event Monitoring Configuration.

Once the keywords have been added, go to **Event Linking** in the configuration tree on the left. Here you will create associations between the AlphaCom Events and actions that ExacqVision can perform based on those events.

1. Click the **New** button to create a new Link.
2. Select **Serial Port** as the Event Type.
3. In the Event Source section, select the newly listed event target with the keyword you just created. It will be listed in this format: *Serial Profile Name – Keyword "Phone"*
4. Specify the **Action Type** and **Action Target**. For example, *Switch Video* will automatically switch your live video feed to the camera you selected under Action Target when the keyword is received.
5. Click Apply. You can now see these events listed in live view.



While there are more features in exacqVision to be utilized from these event triggers, this guide is not meant to be an exhaustive explanation of each option. Please see our [documentation](#) or contact Exacq Support for further assistance.

For more in-depth questions on Stentofon or AlphaCom configuration, features, and options, please contact Zenitel support.

Contact Info & Support

Zenitel Customer Support

Web: <https://www.zenitel.com/customer-service>

Phone: Global: +47-4000-2700 , USA: +1-816-231-7200

exacqVision Technical Support

Web: <https://exacq.com/support/techsupport/>

