

## Panasonic 360-degree Network Camera Multistreaming

Panasonic 360-degree network cameras can send up to three streams to exacqVision. This includes one JPEG stream, and two H.264 streams. All three streams are configured on the same page in the camera's web configuration page.

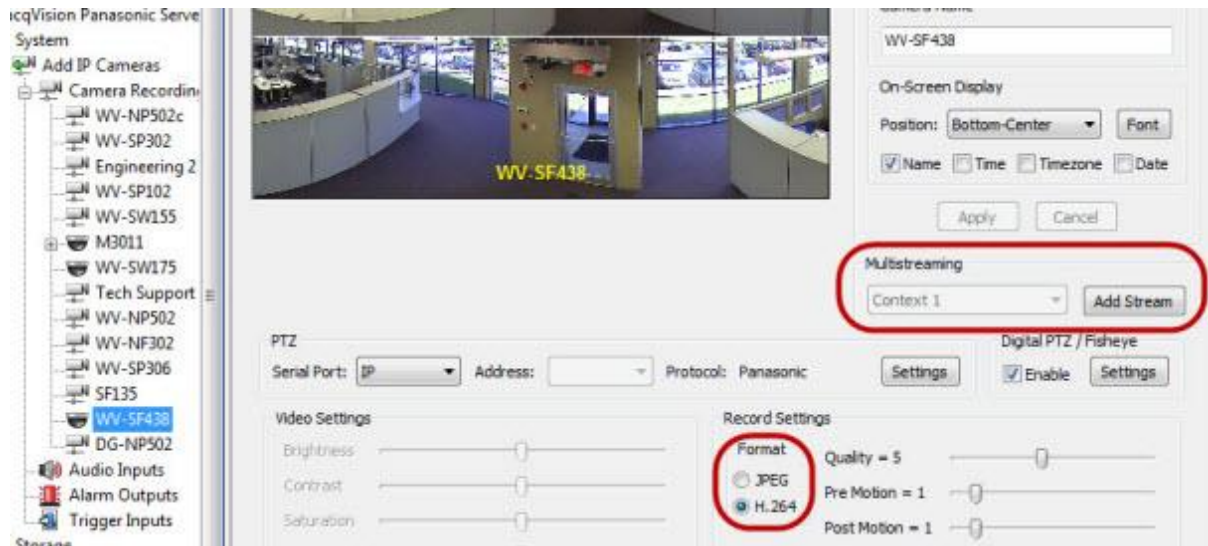
The screenshot displays the web configuration interface for a Panasonic WV-SW458 Network Camera. The interface is divided into a left-hand navigation menu and a main configuration area. The navigation menu includes buttons for 'Live', 'Setup', 'Basic', 'Image/Audio', 'Multi-screen', 'Alarm', 'Advanced func.', 'User mng.', 'Server', 'Network', 'Schedule', and 'Maintenance'. The 'Setup' button is highlighted in green. The main configuration area is titled 'JPEG/H.264' and contains several sections. The 'Image capture mode' is set to 'Double Panorama + Single PTZ'. The 'JPEG' section is circled in red and includes a 'Refresh interval (JPEG) \*' set to '1fps' and an 'Image capture size' set to 'Single PTZ/1280x960'. Below this is a table for 'Image quality setting' with columns for resolution and image quality. The 'H.264(1)' section is also circled in red and includes 'H.264 transmission' (On), 'Internet mode (over HTTP)' (On), 'Image capture size' (Double Panorama/1920x1080), 'Transmission priority' (Frame rate), 'Frame rate\*' (30fps \*), and 'Max bit rate (per client) \*' (Max 4096kbps \* - Min 4096kbps \*).

Resolution	Image quality
Double Panorama/1920x1080	5 Normal
Double Panorama/640x360	5 Normal
Double Panorama/320x180	5 Normal
Single PTZ/1280x960	5 Normal
Single PTZ/VGA	5 Normal
Single PTZ/QVGA	5 Normal

If you configure two additional streams on the camera in exacqVision Client, either the main stream or one of the secondary streams must be JPEG. If you select JPEG for the main stream, the secondary streams will automatically be H.264. Similarly, if you select H.264 for

# exacqVision Support Portal

both the main stream and first secondary stream, the other secondary stream will automatically be JPEG.



**NOTE:** The Image Capture Mode and Image Capture Size selected on the camera's configuration page for each stream will also be the mode and size used by exacqVision. If you select a PTZ mode for more than one stream, any PTZ functions performed on one PTZ stream will also be performed on the other PTZ stream. You cannot control PTZ separately on multiple streams from the same camera.