

## Overview

This document is intended to be a brief summary of the configuration and function of Auxiliary Commands available through the ExacqVision Onvif plugin. Auxiliary commands are provided by the firmware in the camera. ExacqVision can communicate these commands from the server to control various functions including (but not limited to)

- Day/Night mode on/off
- Relay on/off
- Wiper on/off
- Directional commands (PTZ, rail cameras, etc.)

## Requirements

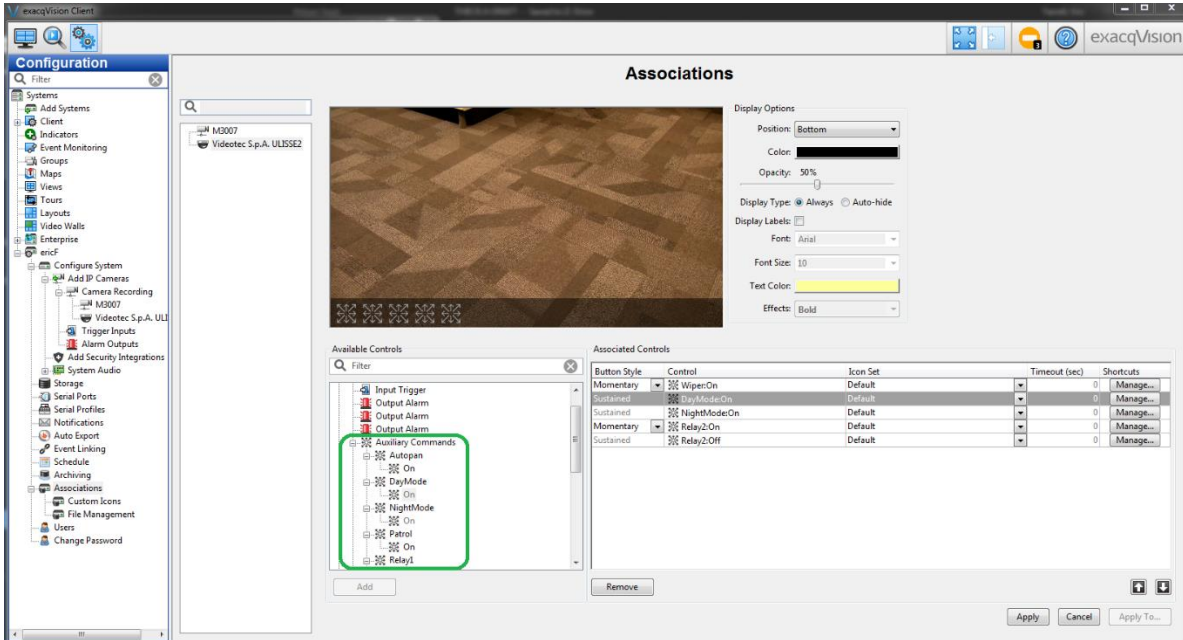
1. ExacqVision client 9.4 or later
2. Professional or Enterprise level license (ExacqVision)
3. Compatible cameras

NOTE: This functionality requires that the IP camera be connected to ExacqVision using our ONVIF plugin.

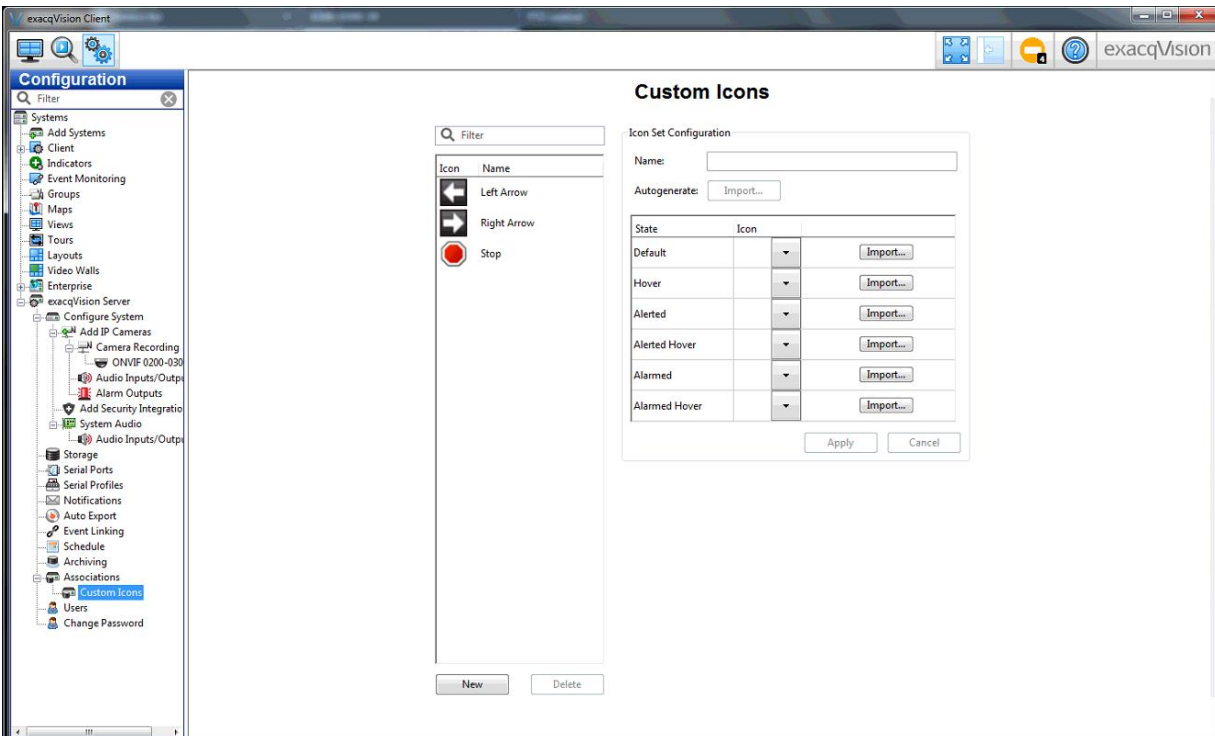


Setup

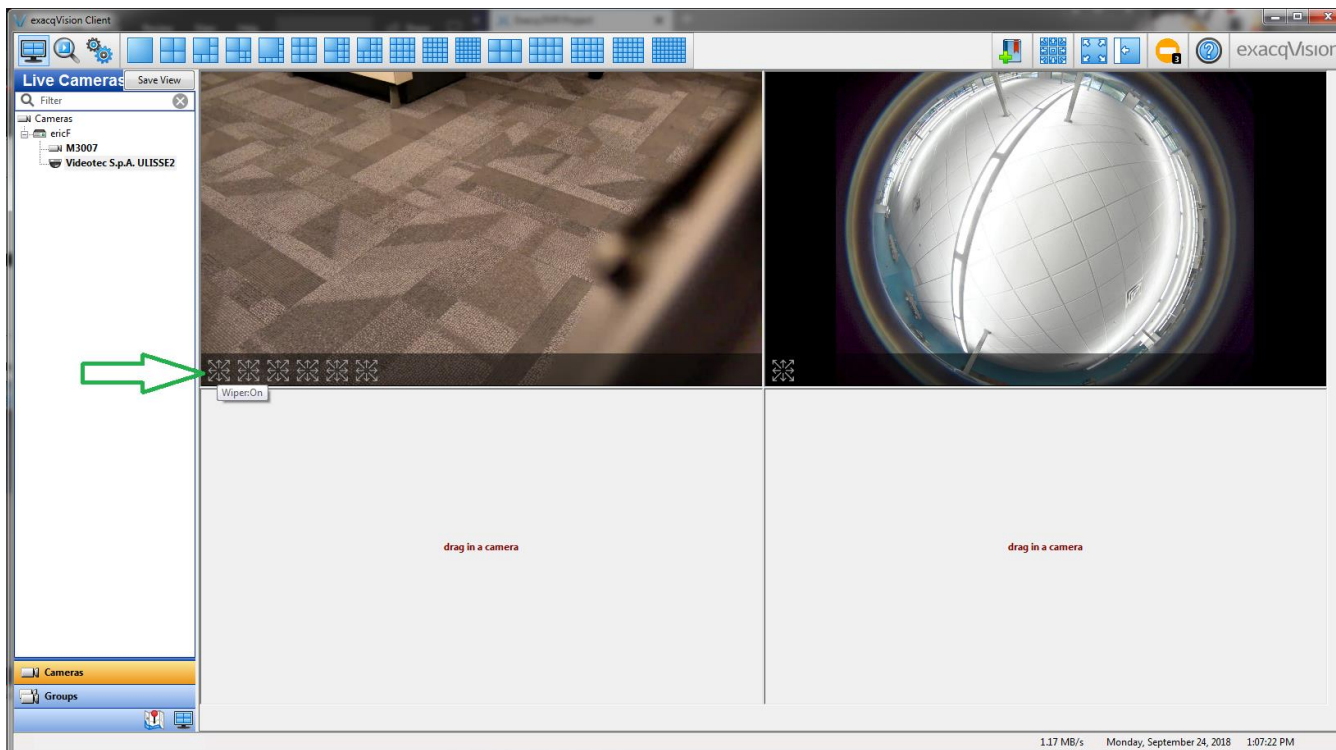
1. All available Auxiliary Command controls provided by your specific IP camera will be displayed on the Associations page. (example in green box in this image)



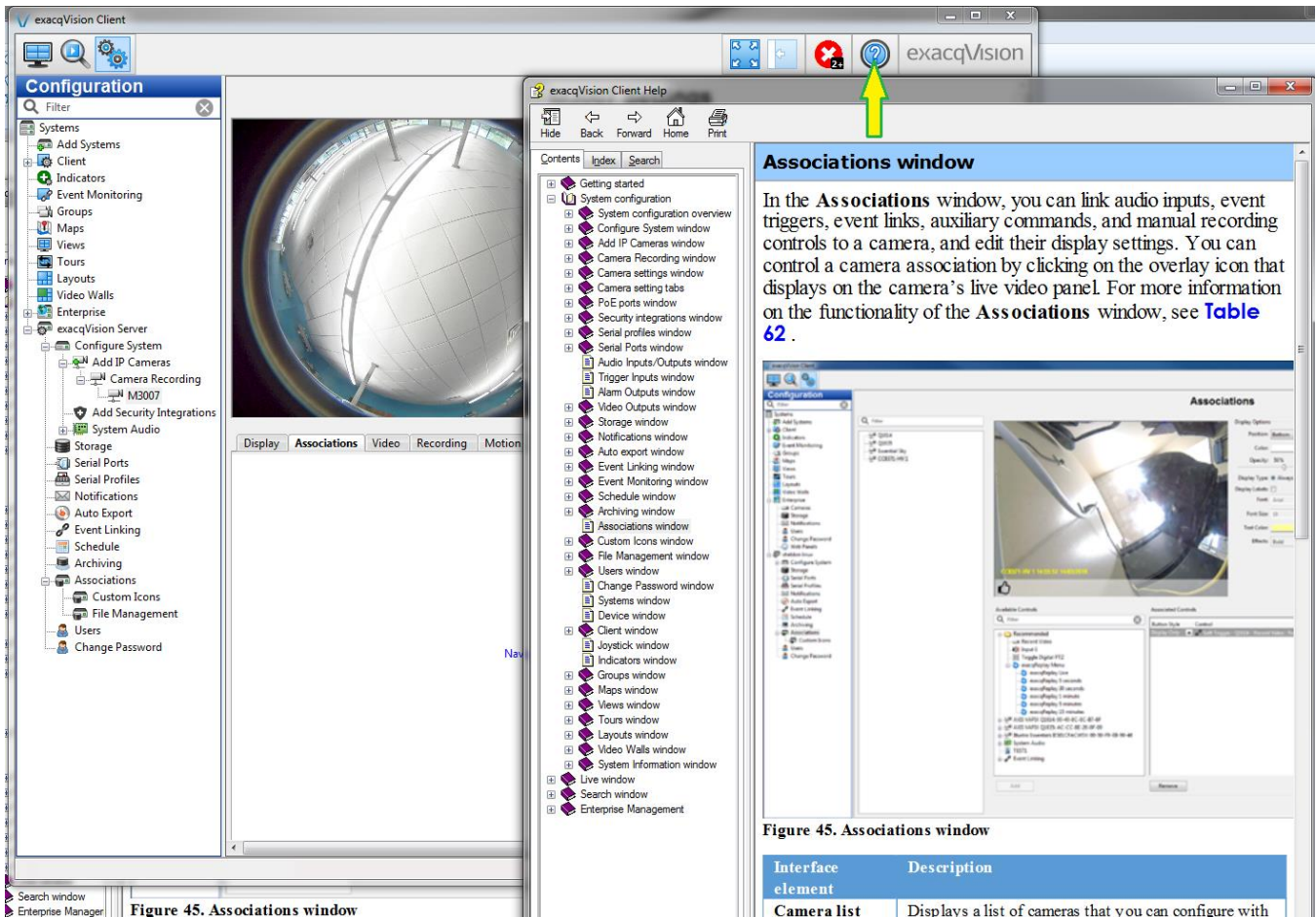
2. Select desired Associations, settings, and icons in the Associations configuration section of the ExacqVision client. Through ExacqVision’s Custom Icons option, you can upload images to replace the default icons provided.



Note: These actionable icons are only functional in Live View. Clicking the icons in the Associations configuration page will not actuate the function assigned.



For more information on the functionality of Associations within ExacqVision, please see the Associations page Help Menu.



## Contact Info & Support

### EXACQ

ExacqVision Support & Resources: <https://exacq.com/support/>

Exacq Tech Support: <https://exacq.com/support/techsupport/>

