

This document describes the process for configuring an exacqVision system for use with an S2 NetBox access control system. To configure the exacqVision system, complete the following steps.

Installation

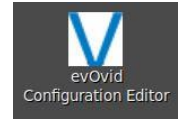
1. Download and install the Web Service from <https://www.exacq.com/support/downloads.html>. See the exacqVision Web service User Manual at <https://exacq.com/support/manspecs/?permalink=exacqVision%20User%20Manuals> for more information.
2. On the exacqVision system, create a username/password with Power User or Full Admin permission to be used by S2 and the OVID driver.
3. Obtain the IP address of the exacqVision Web Service server.
4. Download the OVID driver from <https://exacq.com/support/downloads.php?section=accesscontrol>. Under Access Control Plugins, expand S2 to display Windows and Linux options:
 - a. **Windows:** Run the installer and continue.
 - b. **Linux:** Open a Terminal window and type the following:

```
sudo dpkg -i /home/admin/Downloads/exacqVisionOVIDDEV-X_X_XX_XXXXX.deb
```

(Replace the X portions with a valid version number.)

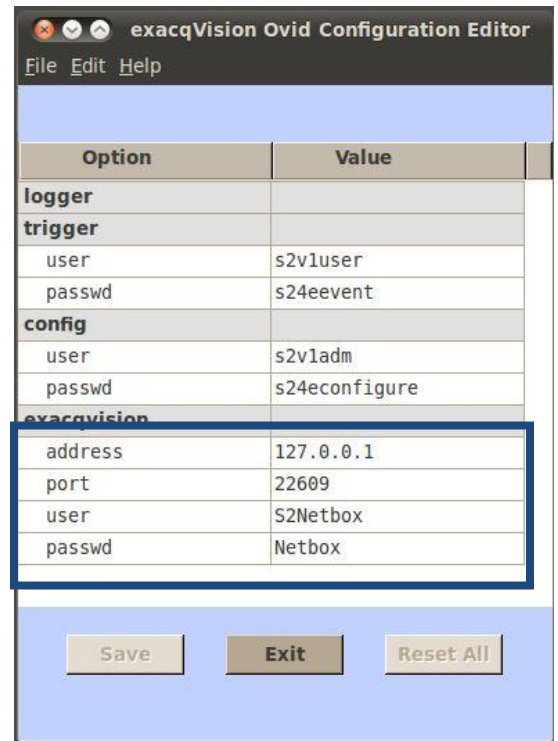
Configuration

An evOvid Configuration Editor icon is saved to the desktop during the installation (see notes below if you do not have this icon). Double-click the icon to launch the editor.



NOTES:

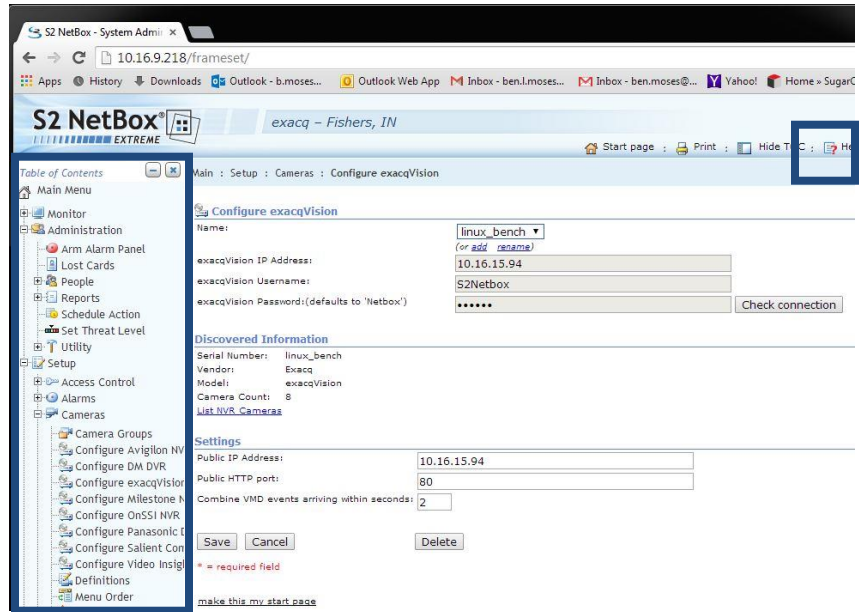
- If the command line interface is not used to install OVID on a Linux system, and the user double-clicks on the .deb file to install it through the Package Manager, the installer will not provide an icon on the Desktop for editing the evOvid configuration file. In this case, you can still open the file from `/usr/local/exacq/ovid/ovid.ini`.
- In Linux, you might be asked for a super user or root password; this password must be known before saving any changes to the OVID configuration file.
- If installing the S2 OVID driver on the same system as the exacqVision server, the default settings should be correct and no changes will be necessary.
- If installing the S2 OVID driver on a system other than the exacqVision server, edit the IP Address to point to the exacqVision server.
- The port number is 22609 by default and should not be changed unless it was previously changed on the exacqVision server.
- User and password are the credentials that S2 will use to log in to the exacqVision system. Ensure that an account with these credentials exists on the exacqVision system with either Power User or Admin level privileges. If not, create an account on the exacqVision recorder with these credentials, or use credentials that match an account that can be used to log in to S2 on the exacqVision recorder.

A screenshot of the 'exacqVision Ovid Configuration Editor' application window. The window has a title bar with standard Linux window controls and a menu bar with 'File', 'Edit', and 'Help'. The main content area is a table with two columns: 'Option' and 'Value'. The table is divided into sections: 'logger', 'trigger', 'config', and 'exacqvision'. The 'exacqvision' section is highlighted with a blue border. At the bottom of the window, there are three buttons: 'Save', 'Exit', and 'Reset All'.

Option	Value
logger	
trigger	
user	s2v1user
passwd	s24eevent
config	
user	s2v1adm
passwd	s24econfigure
exacqvision	
address	127.0.0.1
port	22609
user	S2Netbox
passwd	Netbox

1. Browse to the IP address of the S2 NetBox and enter the default username and password (**admin/admin**).
2. Navigate to **Setup | Cameras | Configure ExacqVision** in the site tree.
3. Click the **Help** button in the upper-right corner of the screen.

NOTE: If you are configuring multiple exacqVision systems, each system must have a local instance of exacqVision Web Service running. Configure each exacqVision system individually within the Netbox interface.



Click on the appropriate **exacqVision NVR Integration Guide** links and follow the instructions for the S2 NetBox setup.

