



# exacq & KiwiVision Integration

## Video and Alarm Integration

## Table of Content

1. Overview .....	3
2. Video integration .....	3
3. Event Integration.....	4

This document describes the integration of exacq and KiwiVision products. Both the integration of video and alarms are enabled.

## 1. Overview

KiwiVision is a suite of video analytics applications that integrates with exacqVision by actuating soft triggers on exacqVision recorders. This allows KiwiVision to assert the following functionality on exacqVision recorders.

- Record Video
- Record Audio
- Output Trigger
- Output Video
- Notify (email)
- Auto Export
- Command PTZ Presets

Post-analysis video is delivered to exacq via RTSP streams from KiwiVision. This means the video may include bounding boxes and other graphic detail that KiwiVision generates and overlays onto the video.

### NOTE:

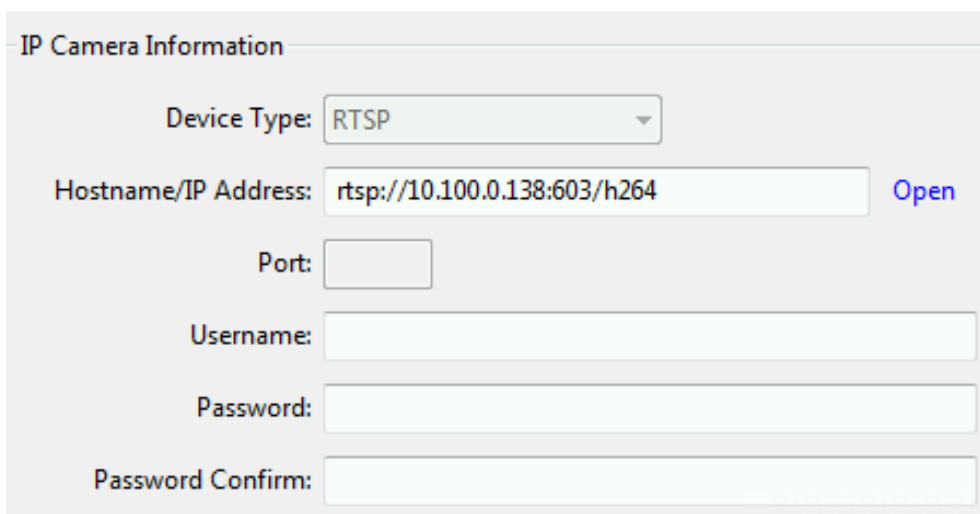
1. RTSP connections to exacqVision do not include metadata.
2. Each RTSP connection with KiwiVision requires one exacqVision license

## 2. Video integration

All KiwiVision products allow the integration of videos that include overlays. It can be accessed by exacq using RTSP.

Both MPEG-4 and JPEG are supported and can be accessed by opening `rtsp://<ip>:<port>/mpeg4` or `rtsp://<ip>:<port>/jpeg`

In the KiwiVision Intrusion Detector as well as the KiwiVision Object Detector version 3.1+ it is also possible to access an H.264 stream. In this case `rtsp://<ip>:<port>/h264` is to be used.



The screenshot shows a configuration window titled "IP Camera Information". It contains several input fields and a button:

- Device Type:** A dropdown menu with "RTSP" selected.
- Hostname/IP Address:** A text input field containing "rtsp://10.100.0.138:603/h264". To the right of this field is a blue "Open" button.
- Port:** An empty text input field.
- Username:** An empty text input field.
- Password:** An empty text input field.
- Password Confirm:** An empty text input field.

Figure 1: Configuring an integrated video stream

Figure 1 shows a sample configuration of an integrated video stream. In this case, H.264 video is used with an IP of 10.100.0.138 and a port 603. Each analysis module of KiwiVision uses a different port and can thus be differentiated.



*Figure 2 shows an example of the overlays drawn by the KiwiVision Intrusion Detector*

### 3. Event Integration

Event integration is performed, using Soft Triggers. Soft Triggers have to be created in exacq so that they can be triggered by KiwiVision analysis modules.

To set up Soft Trigger actuation, follow these steps

1. Create a User on the exacq system that KiwiVision can use to log in to exacqVision
2. Create a Soft Trigger in the Event Linking page of exacqVision. The name of the Soft Trigger is important. It is called by name from KiwiVision.

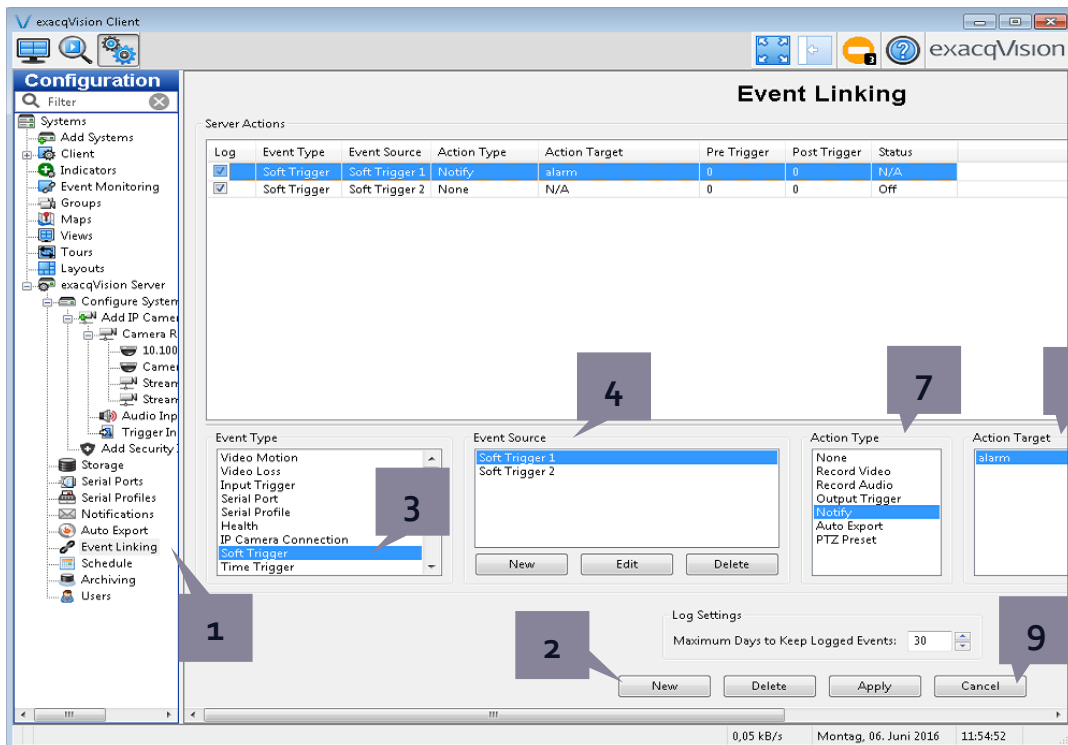


Figure 3 shows a sample Soft Trigger in exacq.

1. Select Event Linking from Configuration Tree
2. Click New
3. Select Soft Trigger
4. Click New under Event Source
5. Enter Name for Soft Trigger (must be a character match to what KiwiVision will be calling - not shown)
6. Click OK (not shown)
7. Select an Action Type
8. Select an Action Target
9. Click Apply

On KiwiVision side, only the server, the login information as well as the soft trigger name have to be specified.

Type	Exacq Trigger
Host	localhost
Port	22609
Username	alarm
Password	•••••
Soft Trigger Name	Soft Trigger 1

Figure 4 shows such a configuration.

In this case Soft Trigger 1 is triggered in case of an event in KiwiVision and can be e.g. be used for starting recordings or any other action possible in exacq.

There is no limit in the number of soft triggers that can be used by KiwiVision.