

Introduction

The following setup guide explains the configuration and setup of the Exacq Vision NVR and the ICTProtegeGX using full bi directional high level interface commands. The Exacq Vision NVR integration is a native HLI built directly into the ICTProtegeGX server.

Audience

This application note is targeted at anyone who administers or maintains an ICTProtegeGX System and wants to integrate with the Exacq Vision NVR platform.

It is expected that readers of this document are familiar with the administration tasks involved with configuring, integrating and installing the ICTProtegeGX System and Associated Application Software as well as configuring and understanding the security principles and policies within the facility they are working.

The integration professional should be familiar with the configuration of the Exacq Vision NVR and associated tasks relating to integration.

Scope

This scope of this document is limited to configuring the HLI commands on the ICTProtegeGX System Servers as part of an integrated NVR and HLI Solution and does not address the following topics:

- Firewall and Network Security
- NVR Setup beyond the scope of the HLI

Refer to the Related Documents for additional configuration and background information.

Related Documents

- Exacq Vision NVR Setup and Management Documentation. This information should be downloaded from the Exacq website.

Time Server

NVR and DVR Integration rely on the time configuration in the hardware and operating systems that are being used in the site. It is imperative that ALL devices are linked to the same time server and have the correct time zones set.

Overview

Integration with the Exacq Vision is designed to be as flexible as possible however simple in the configuration and setup. There are three steps to completing the integration and at any time after each step the integration can be stopped if that is the functionality required.

Video Viewing, Archive, and Camera Integration

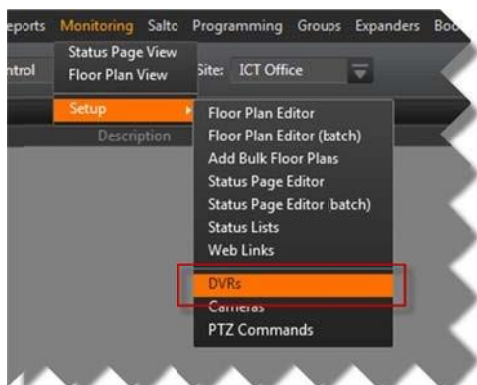
This step is one of the basic and will get your cameras integration into the ICTProtegeGX Platform and online. You will need to assign the cameras to certain records in the ICTProtegeGX platform. For example you might assign a Camera that is looking at an entry door to that doors Camera Entry Property. Events from that door can now be right clicked and the associated camera footage retrieved. [Exacq Vision to ICTProtegeGX](#)

Will display general events from the Exacq Vision NVR and allow the events to be logged, trigger alarms or actions within GX. Motion and camera related events have associated camera footage that can be reviewed directly in the ICTProtegeGX UI. Log NVR health issues directly and create e-mail alerts, alarms and actions.

Integration Setup

You will need the name of the NVR or the IP address of the unit. The login credentials and the port number if different from default. The following configuration assumes that the NVR is default.

1. Open and login to the ICTProtegeGX platform using a full administrator account, the default is Admin and blank password. Navigate to the **Monitoring | Setup | DVRs** Menu as shown below.



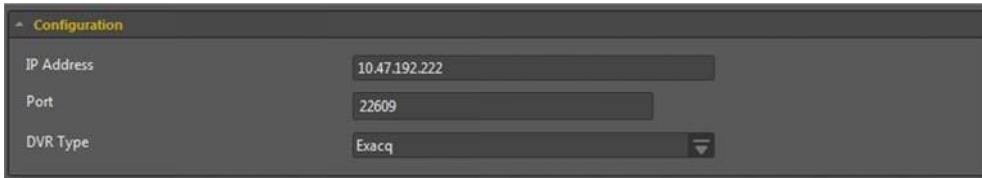
2. From the DVR menu select the ADD button.



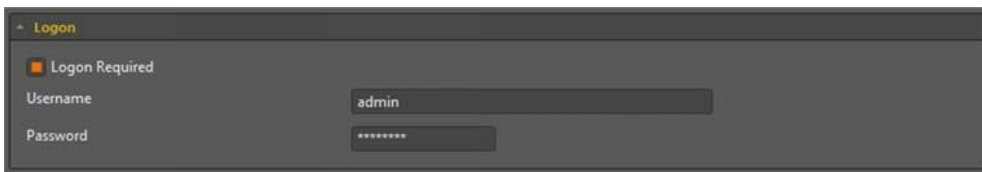
3. Give the DVR a name and select save.



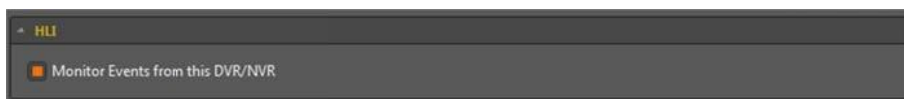
4. Enter the IP Address and Port number. The default port number is **22609** on the Exacq Vision NVR. Select the DVR Type from the list as **Exacq**.



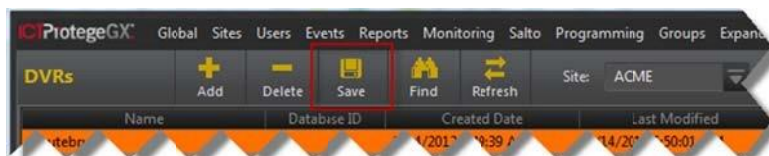
5. Enter the logon name and password the default is **admin** and **admin**, users are configured in the Exacq Vision server and a suitable user name and password should be created. If your DVR is not default then you will need to obtain these settings from the administrator.



6. To enable the logging of events from the NVR select the HLI Command.

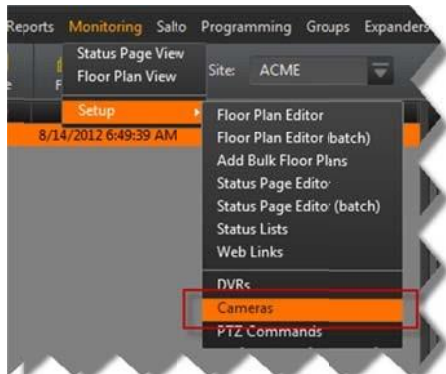


7. Once the configuration parameters are set, select the save button.



This concludes the programming of the DVR. We now need to setup some cameras and this is done using the same setup menu.

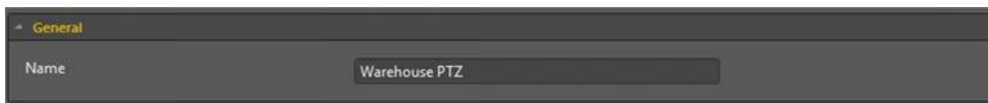
1. Navigate to the **Monitoring | Setup | Cameras** Menu as shown below.



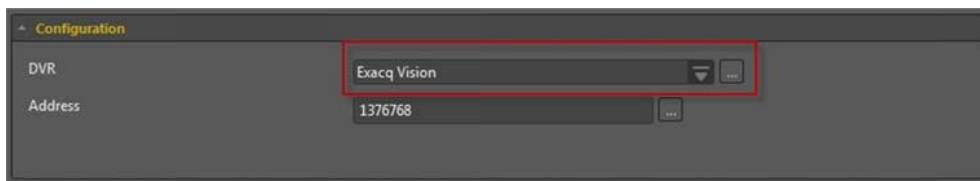
2. From the Cameras Menu select the **ADD** button to add a camera to a DVR.



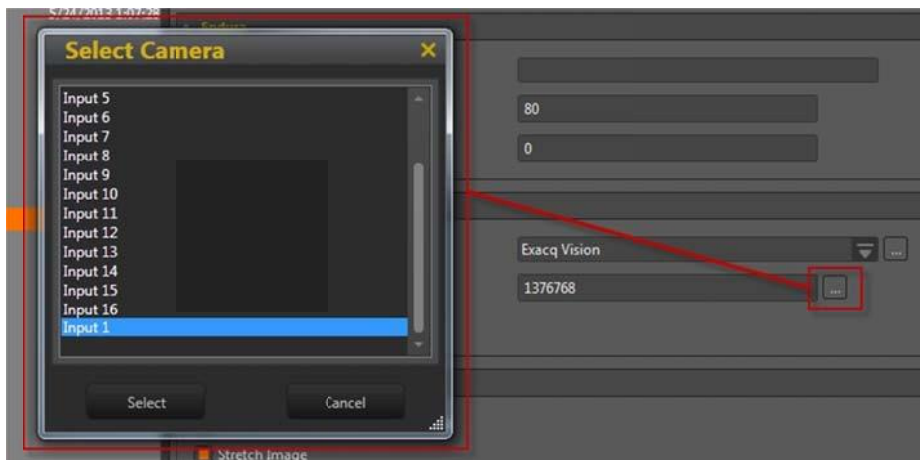
3. Give the camera a name and select save.



4. Select the NVR/DVR from the drop down list. This will be the NVR or DVR that you completed in the previous steps.



5. Link the camera to the channel in the NVR. To do this select the ellipses button to the right of the address as shown below.



Highlight the camera you want and then click the select button. The address will update with the camera channel.

In some cases this number may reflect the actual camera channel however in most cases this is an internal number used within the NVR integration and should not be manually edited or programmed.

6. Select the save button saving the camera.



Camera configuration is complete, you can repeat the steps for each camera you want to integrate with. At this point the cameras and NVR have been integrated however nothing has been linked. The following will program a camera to be linked with a button and group of buttons on a status page, embed the camera into a status page, link the camera with an event.

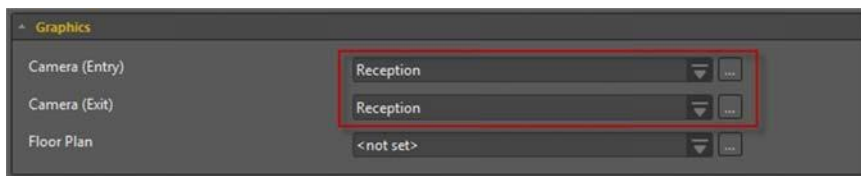
Door and Recording Linking

When you link a camera to a door any door event that occurs can then be right clicked and the associated camera viewed live or the archived video footage retrieved. Although the following steps are shown for a door they are equally valid for any record that allows a camera to be selected. A camera can be assigned to the following:

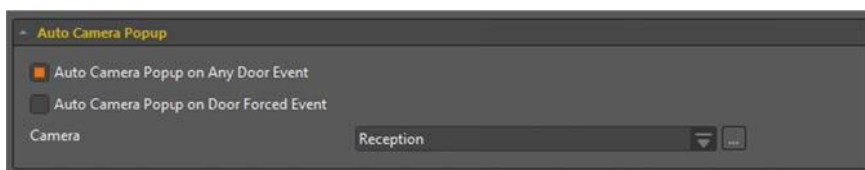
- Door
- Input
- Area
- Any event using the filter and camera assignment

To Program the Door:

1. To link the camera to a door open the door record from the Programming | Doors and select the general tab.
2. From the general tab select the camera, entry and exit cameras should be selected depending on the side of the door that the camera is.



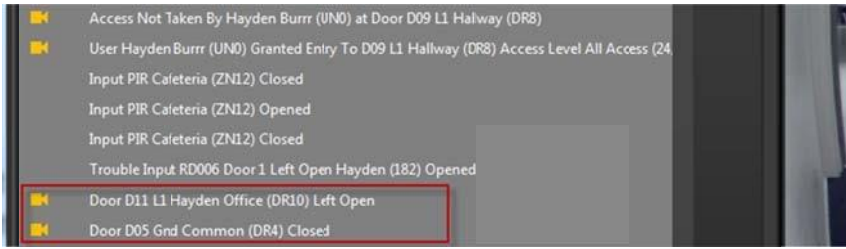
If you want to use the camera for pop up verification you can enter the same camera.



3. Save the changes you have made to the door record.

It is important to note that ONLY events from this point forward will be linked to the camera, if you change the camera in the door then events from that point forward will point to the new camera.

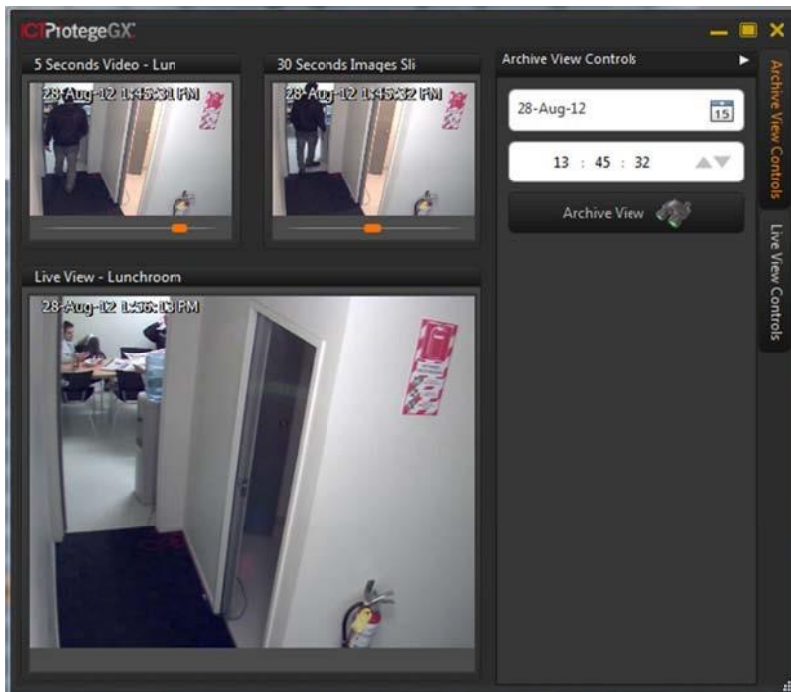
- Test your integration by presenting a card or unlocking the door to generate an event associated with the door. In the event log you will be shown a small camera icon to the left of the event.



- Right click on the event, from the context menu select the action you wish to perform.



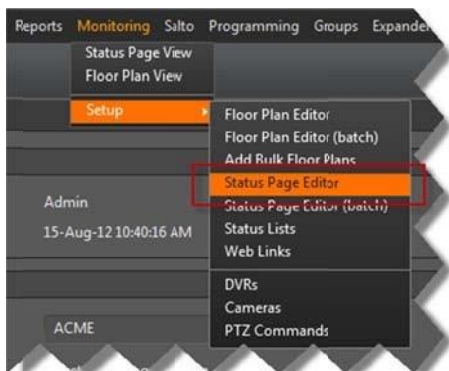
- Selecting archive view showing the 5 second loop on the top left, 30 second loop in the top right that can be controlled and the live view in the main window.



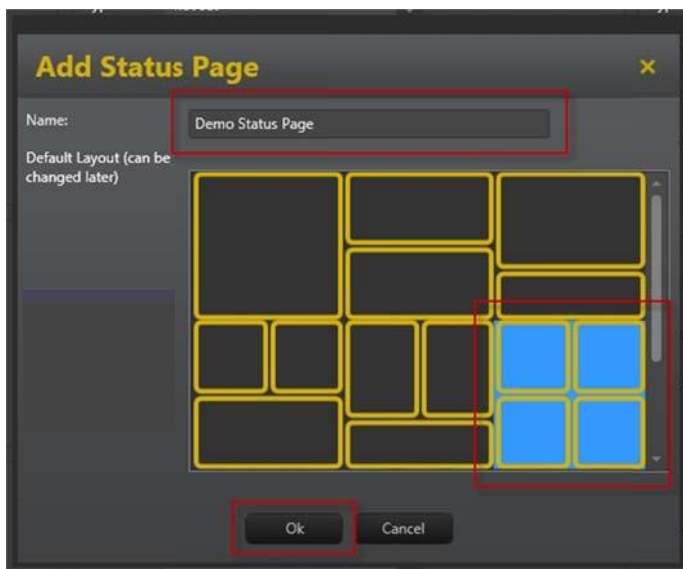
Status Page Embedding

Before setting up a status page review the NVR's that support this option. The Exacq Vision supports this option however some NVR's are not supported.

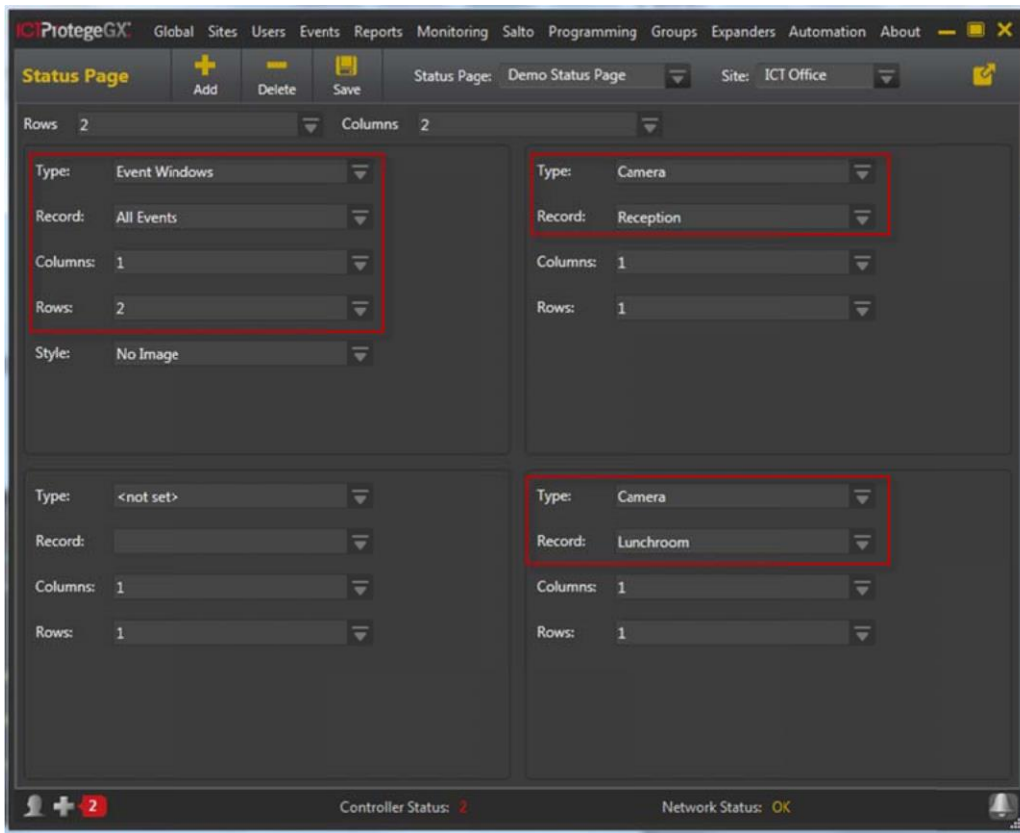
1. From the Monitoring menu select **Monitoring | Setup | Status Page Editor**.



2. Using the quick setup page you can select a name of a new status page and the format you want. We will select a 2 x 2 page. Give it a name our example is Demo Status Page and then select the OK button.

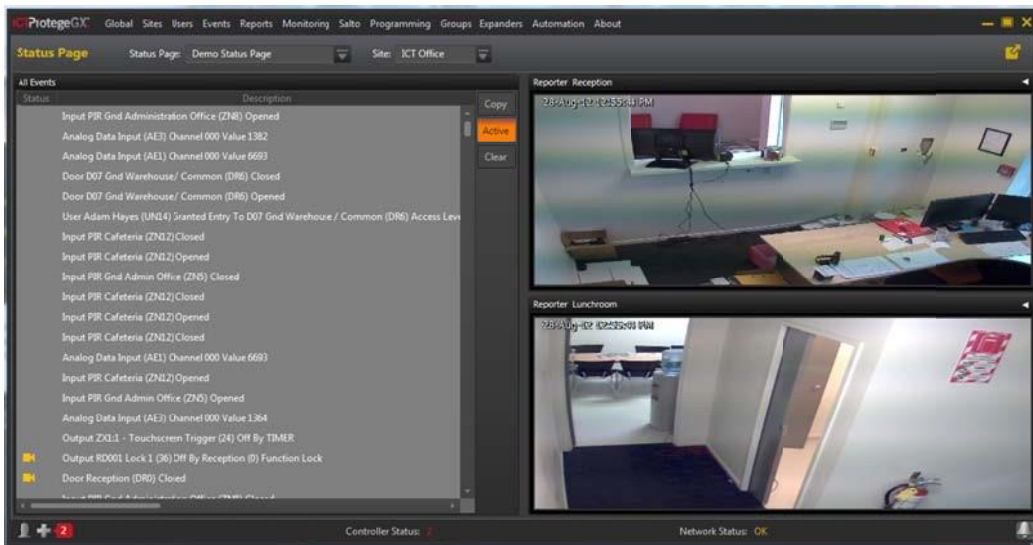


3. In the top left quadrant select the type and this will be **Event Windows** (we want events on the left side 2 containers and the right to have two cameras). We now want to select the record for our events and this will be **All Events** then finish this by selecting the **Columns = 1** and the **Rows = 2**.



This will stretch the events over the left two quadrants. On the right side select the two cameras you want to display.

4. To view your page select Monitoring | Status Page and select the page you have created with the embedded cameras and event view as per below.



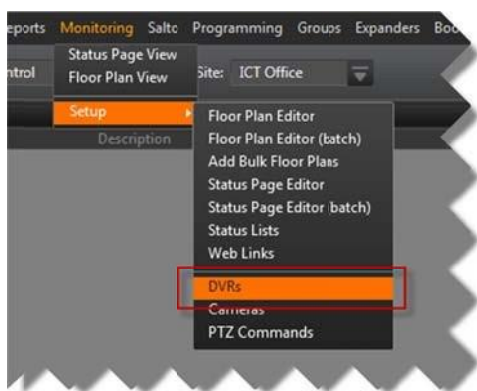
HLI Integration – exacqVision NVR to ICTProtegeGX

Events from the Exacq Vision NVR can be received by the ICTProtegeGX System by enabling the HLI option.

This is a licensable feature so first select **About | License** from the menu and check that you have the HLI option enabled. One HLI enabled will allow you to do multiple NVR's and it is not required per NVR that is installed.

Open the DVR configuration page.

1. From the Monitoring menu select **Monitoring | Setup | DVRs**.



If you have not already setup a DVR follow the steps to configure a DVR and assign the appropriate cameras.

This section is based on a DVR already being configured.

2. Select the DVR you want to enable the HLI integration.
3. On the general page select the “Monitor Events from This DVR/NVR” option. This tells the NVR and DVR services that they need to connect and monitor events.



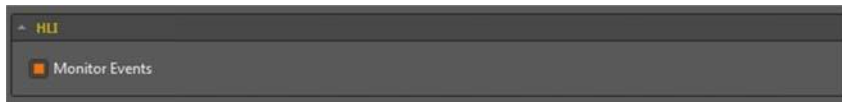
4. Save the configuration settings.

Once this is complete all none camera related events will be monitored. These generally will include Hard Disk Drive Errors, Health and Temperature Alarms generated by the NVR.

To enable camera monitoring.

1. Follow the steps for adding a camera.
2. Select the camera you want to enable events for from the list.

3. Select the “Monitor Events” option.



4. Save the configuration setting.

HLI Integration – ICTProtegeGX to exacqVision NVR

It is desirable with the integration that an event that is generated in the ICTProtegeGX System will send an event or action to the NVR allowing the ability to trigger a preset PTZ position, enable alarm recording or alter the operation of the NVR user interface (activate a scene or push a camera to a monitor).

This is a licensable feature so first select **About | License** from the menu and check that you have the HLI option enabled. One HLI enabled will allow you to do multiple NVR's and it is not required per NVR that is installed.

Contact Info & Support

For help installing and working with ICT and exacqVision, contact ICT's Support team.

Website: <https://www.ict.co/Contact-Us>

Phone

New Zealand 0-800-428-111

Australia 1-800-428-111

US 1-855-428-9111

Canada 1-647-724-3428