

Overview

ExacqVision can control and view status of Kantech access control equipment, such as KT-1 or KT400 hardware, via Entrapass Web. Operational controls and real-time feedback capability have been added to the exacqVision Client giving the user control of the access control system through the exacqVision user interface.

KANTECH

From Tyco Security Products



Purpose

The purpose of this document is to provide guidance for integrating Kantech access control equipment with the exacqVision Client and setting up Camera Associations in the exacqVision Client for using these controls.

NOTE: This guide is not intended to provide instruction for the installation and configuration of Kantech access control systems and equipment in general. See **Requirements** and **Assumptions** below.

Requirements

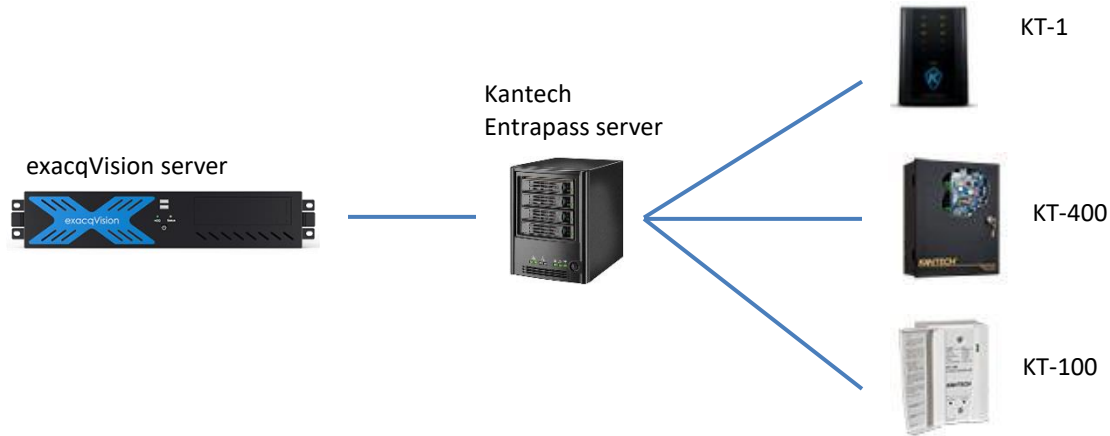
- exacqVision client version: 7.2 (or greater)
- exacqVision server version: 7.2 (or greater)
- exacqVision license: Professional or Enterprise
- Kantech Corporate or Global Edition including components
 - Server
 - Workstation
 - Gateway
 - Smartlink
 - EntrapassWeb
- Kantech OnBoard meets these requirements and this integration can be set up.

Assumptions

1. All Kantech software has been installed and registered
2. At least one Kantech user with proper EntrapassWeb privileges has been created in the Kantech system for this integration
3. EntrapassWeb, Smartlink, SmartService, and Kantech Server are running and configured properly
4. The EntrapassWeb client can connect and log in to Entrapass Server (as a test)
5. ExacqVision connects using the EntrapassWeb user referenced in step 2
6. Kantech will perceive exacqVision as a logged-in EntrapassWeb user
7. Any hardware such as KT-1's, KT-400's or other access control hardware has been configured in the Kantech system whether it's a remote Kantech server or an exacqVision OnBoard system. Please reference Kantech documentation for connecting Kantech hardware to Kantech server.

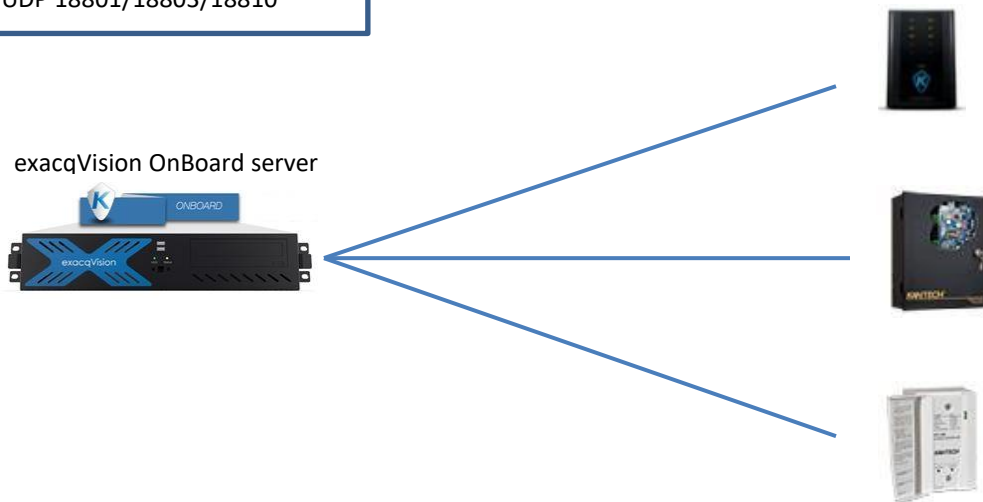


Network Diagram

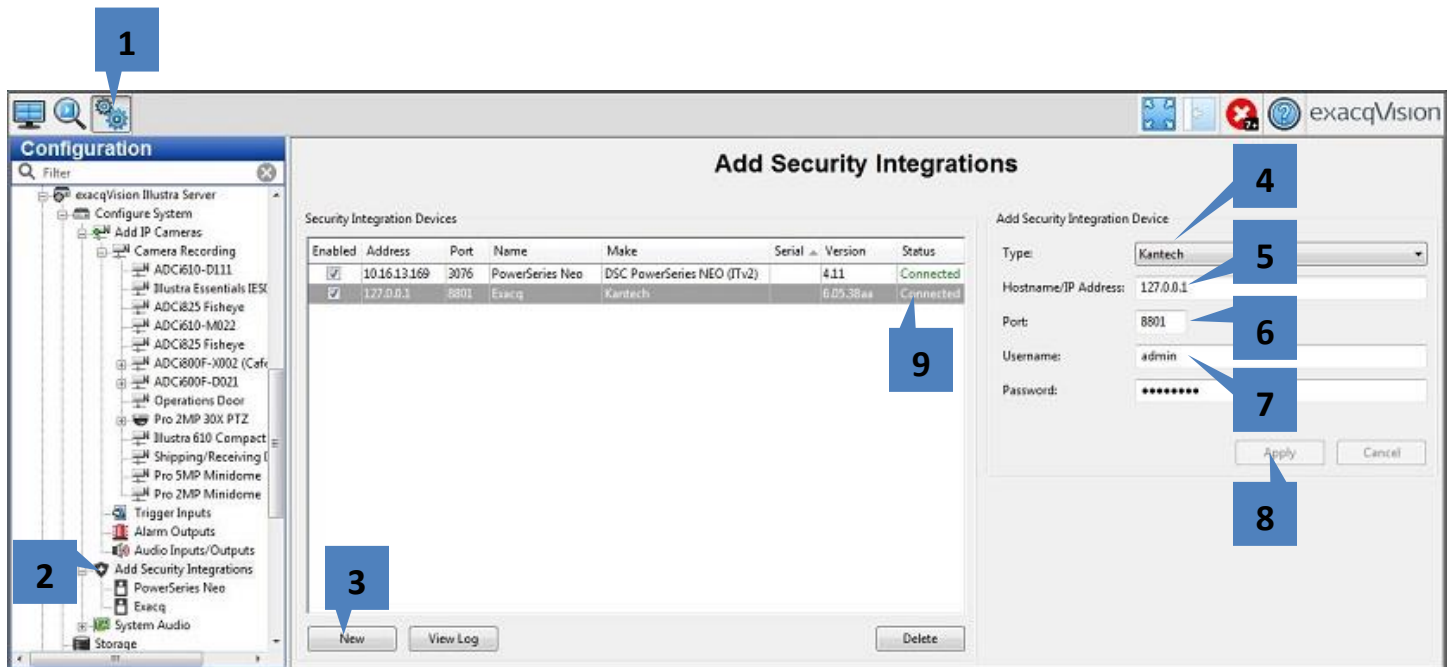


NOTE: Firewall Port Rules may be required for connecting Kantech hardware directly to exacqVision OnBoard. Please see Kantech documentation for more detail. Specific ports used for KT panel communication are

- TCP 18802
- UDP 18801/18803/18810



Add Security Integration



1. Click on the **Config(Setup)Page**
2. Click on **“Add Security Integration”**
3. Click **New**
4. Select **“Kantech”**
5. Enter IP address of the system running EntrypassWeb.
 - a. For exacqVision OnBoard this should be the localhost or loopback IP address (127.0.0.1)
 - b. For remote Kantech systems, enter IP address of the Kantech system that’s running EntrypassWeb
6. Enter port number - 8801 (default)
7. Enter username of Kantech user specified in Step 2 of the [Assumptions](#) section
8. Click **Apply**
9. Verify status is **Connected**

NOTE:

If you are connecting Kantech hardware to an exacqVision OnBoard system via an IP network then you may need to make the following firewall exceptions in the Windows Firewall on the exacqVision OnBoard system so the Kantech hardware can connect to Kantech services and be properly configured.

- TCP port 18802
- UDP ports 18801/18803/18810
- Please check Kantech documentation for the specific ports that your Kantech equipment requires for communication and make those firewall exceptions accordingly in the exacqVision OnBoard system
- The Kantech hardware will need to be configured via Entrypass Workstation (Please see Kantech documentation for this. This guide is not intended to cover Kantech system setup. See [Assumptions](#) section)



Access Control Configuration

10. Click on the new entry in the configuration tree



11. This will display the configuration options and controls available for connected hardware. This example shows typical options and controls of a KT 400.

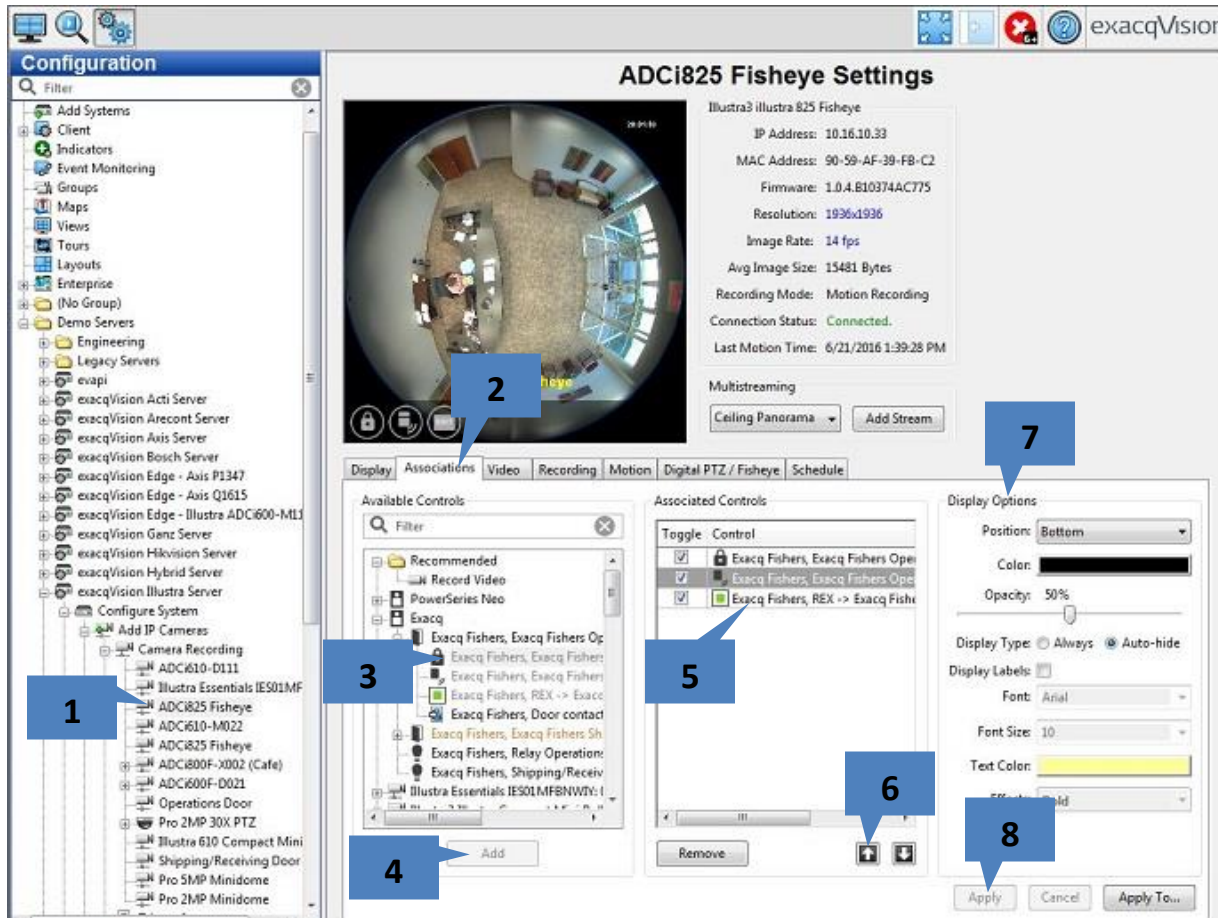
Exacq

11

Name	ID	Type	Actions	Status
Exacq Fishers, Exacq Fishers Operations Door (01.01)	449	Door		Normal
Exacq Fishers, Exacq Fishers Operations Door (01.01) Lock	449	Lock	Unlock	Locked
Exacq Fishers, Exacq Fishers Operations Door (01.01) Reader	449	Reader	Disable Reader	Reader Activated
Exacq Fishers, REX -> Exacq Fishers Operations Door (01.002)	458	REX	Allow REX	Input Bypassed
Exacq Fishers, Door contact -> Exacq Fishers Operations Door (01.001)	457	Input	Allow Input	Input Bypassed
Exacq Fishers, Exacq Fishers Shipping/Receiving Door (01.02)	450	Door		Normal
Exacq Fishers, Exacq Fishers Shipping/Receiving Door (01.02) Lock	450	Lock	Unlock	Locked
Exacq Fishers, Exacq Fishers Shipping/Receiving Door (01.02) Reader	450	Reader	Disable Reader	Reader Activated
Exacq Fishers, REX -> Exacq Fishers Shipping/Receiving (01.006)	462	REX	Allow REX	Input Bypassed
Exacq Fishers, Door contact -> Exacq Fishers Shipping/Receiving (01.005)	461	Input	Allow Input	Input Bypassed
Exacq Fishers, Relay Operations Door Contact Sim Relay (01.001)	453	Relay	Activate	Deactivated
Exacq Fishers, Shipping/Receiving Door Contact Sim Relay (01.002)	454	Relay	Activate	Deactivated

Camera Associations

Camera Associations are a way to quickly view and assert functions by placing icons on the camera Live View. A user can then easily see the statuses and assert controls for integrations, triggers, alarms, inputs, outputs, etc.



1. Click on a camera for which you would like to add camera associations for
2. Click the Associations tab
3. Select the controls from the **Available Controls**
4. Click Add to add the controls
5. Verify they appear in the **Associated Controls** box
6. Use the order buttons to re-order the list as they appear from left to right on the camera view
7. Display Options let you adjust the opacity, position, labels, color etc of the buttons on the camera view
8. Click Apply when complete

Live View

To view and actuate the camera associations, go to the Live View in exacqVision.



1. Switch to Live View
2. Click the Door Unlock icon to perform the action. (Some associations are status only)
3. Select an option from menu
4. Enter Kantech username and password
5. Check to Save Credentials across sessions
6. Check to Save Credentials for just this session
7. Click OK to perform the action

