

Overview

The purpose of this integration guide is to demonstrate the process of integrating Kantech EntraPass access control system with exacqVision VMS system.

Minimum Software version requirements

- exacqVision Server version 5.8.2 or later with Professional license
- Entrapass Corporate Edition version: 6.01 or later

Tested and Supported Versions:

Kantech Entrapass	ExacqVision Server
8.23.22	20.03, 20.06, 20.09, 20.12
8.20.38	19.12
8.10.78	19.06, 19.09, 19.12
8.00.32	19.03
7.51.02	9.6, 9.8

Installation

Prepare the exacqVision server

- Create an account with administrator privileges on the exacqVision server to be used by EntraPass.
- Note the IP address of the machine that exacqVision server is running on.

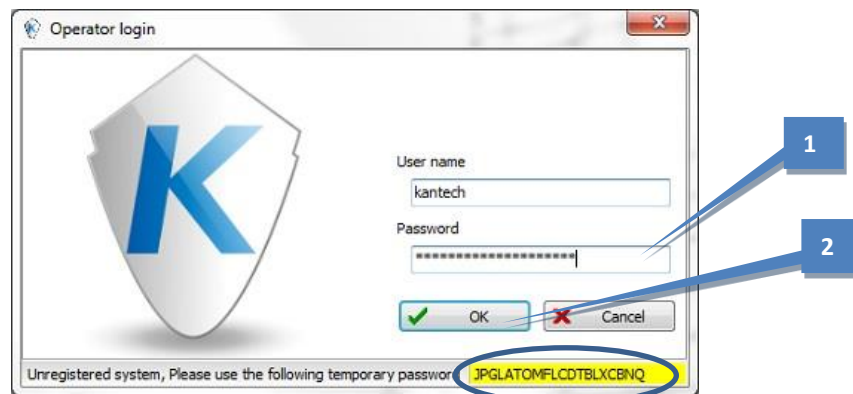
Install Entrapass (Kantech Onboard Systems)

Install EntraPass as directed in the EntraPass installation directory folder (**DOCUMENT**). These documents can also be found in the “C:\Program Files (x86)\Kantech\Server_CE\Document” folder after installation. See our Kantech Onboard Installation Guide found [here](#) for more info.

Downloaded Entrapass – Installation process

Follow the manuals provided by Kantech in the installation directory folder mentioned above. Run **Setup.exe** and follow all prompts through the process. Contact [Kantech Support](#) for more information.

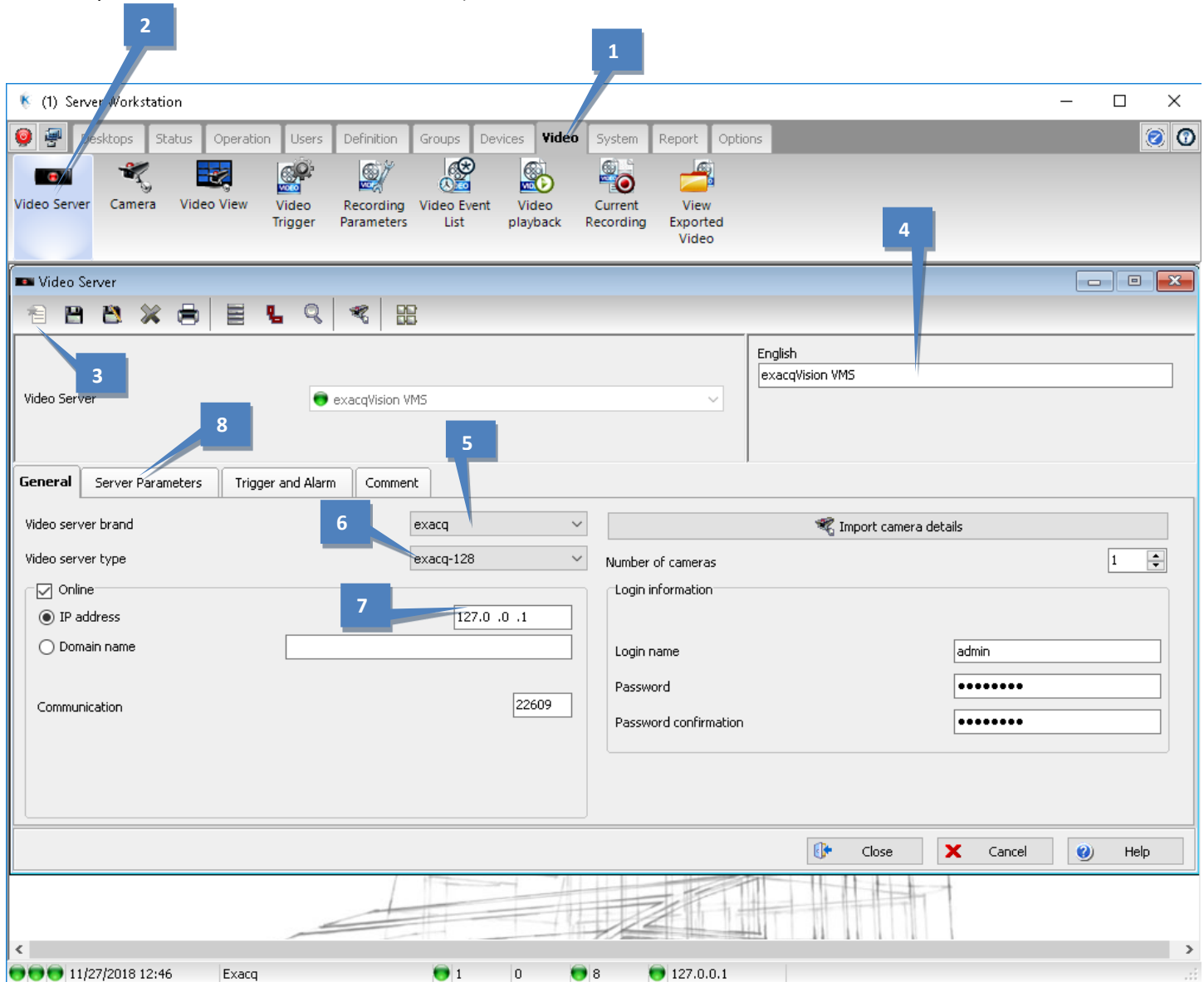
After EntraPass is installed, the installer can log in to the un-registered version for setting up the integration. Double-click the icon on the Desktop to launch EntraPass:



1. Enter the automatically generated password found highlighted in yellow.
2. Click OK.

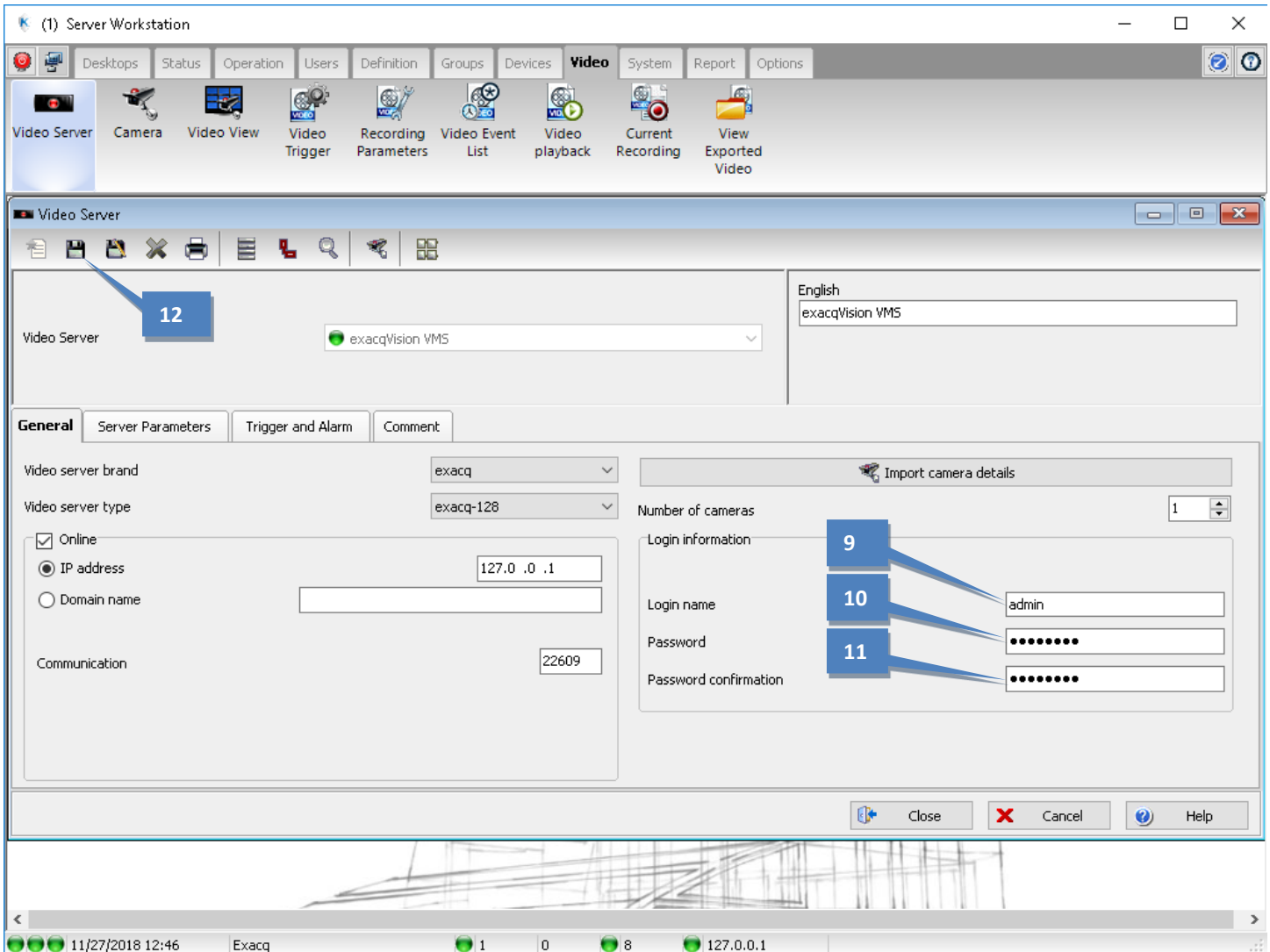
Configuring an exacq VMS

1. Select the Video tab.
2. Click Video Server.
3. Click the New icon.
4. Enter a name.
5. Select "exacq" from the Video Server Brand drop-down list.
6. Select the approximate number of cameras connected to the exacqVision VMS from the Video Server Type drop-down list.
7. Enter the IP address of the exacqVision server.
8. In the "Server Parameters" tab, set the time zone for the ExacqVision server as needed. (This will default to the Windows System time zone of the EntraPass server.)



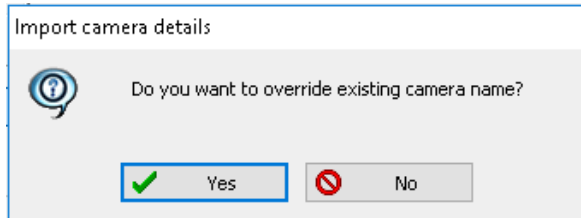
Configuration continued....

9. Enter the username of the account that was created on the exacqVision server for use with EntraPass.
10. Enter the password of this account.
11. Confirm the password.
12. Click Save.

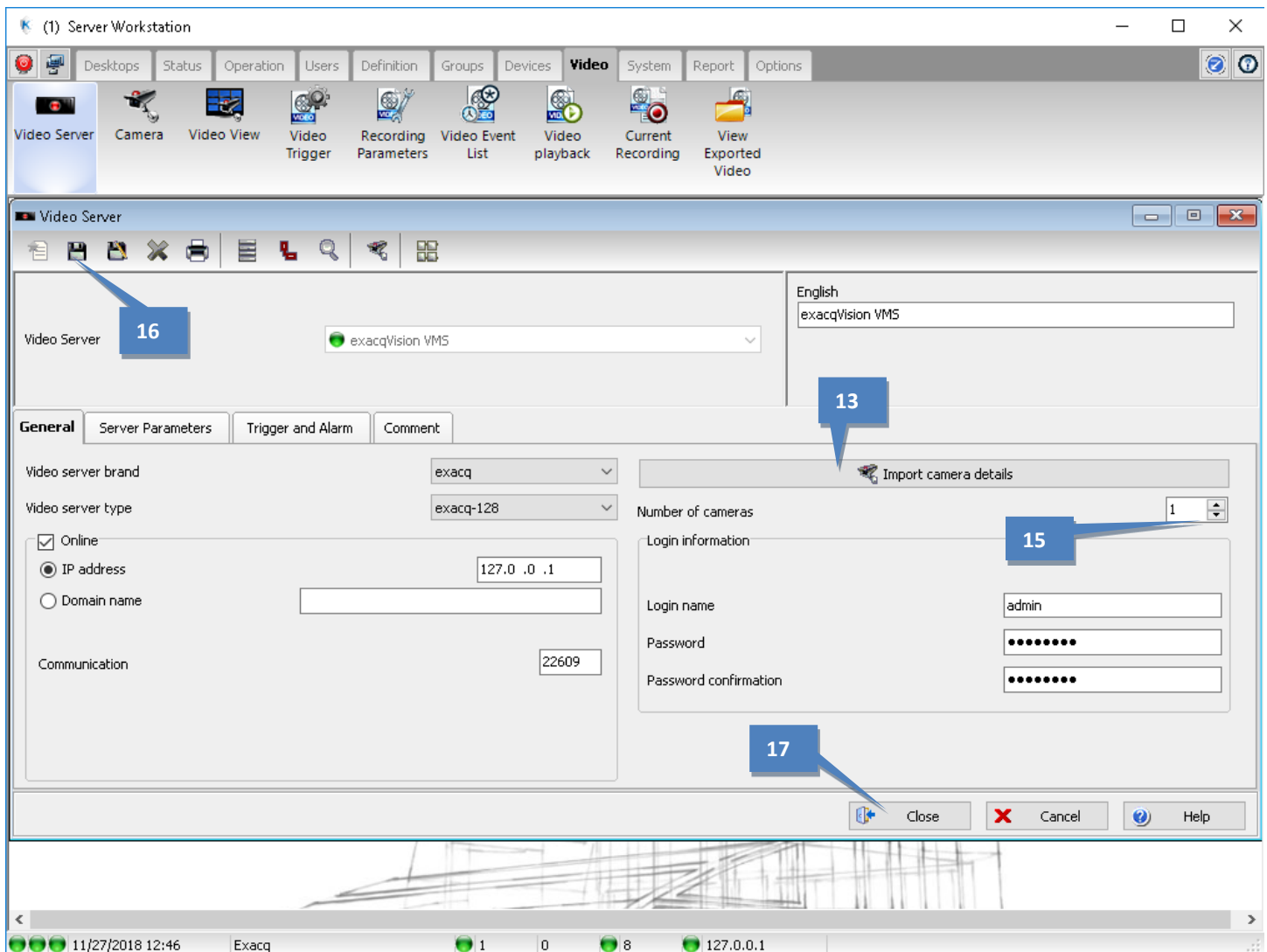


To import cameras from the exacqVision server;

13. Click Import Camera Details.
14. When prompted, choose Yes to add cameras as they are named within ExacqVision.

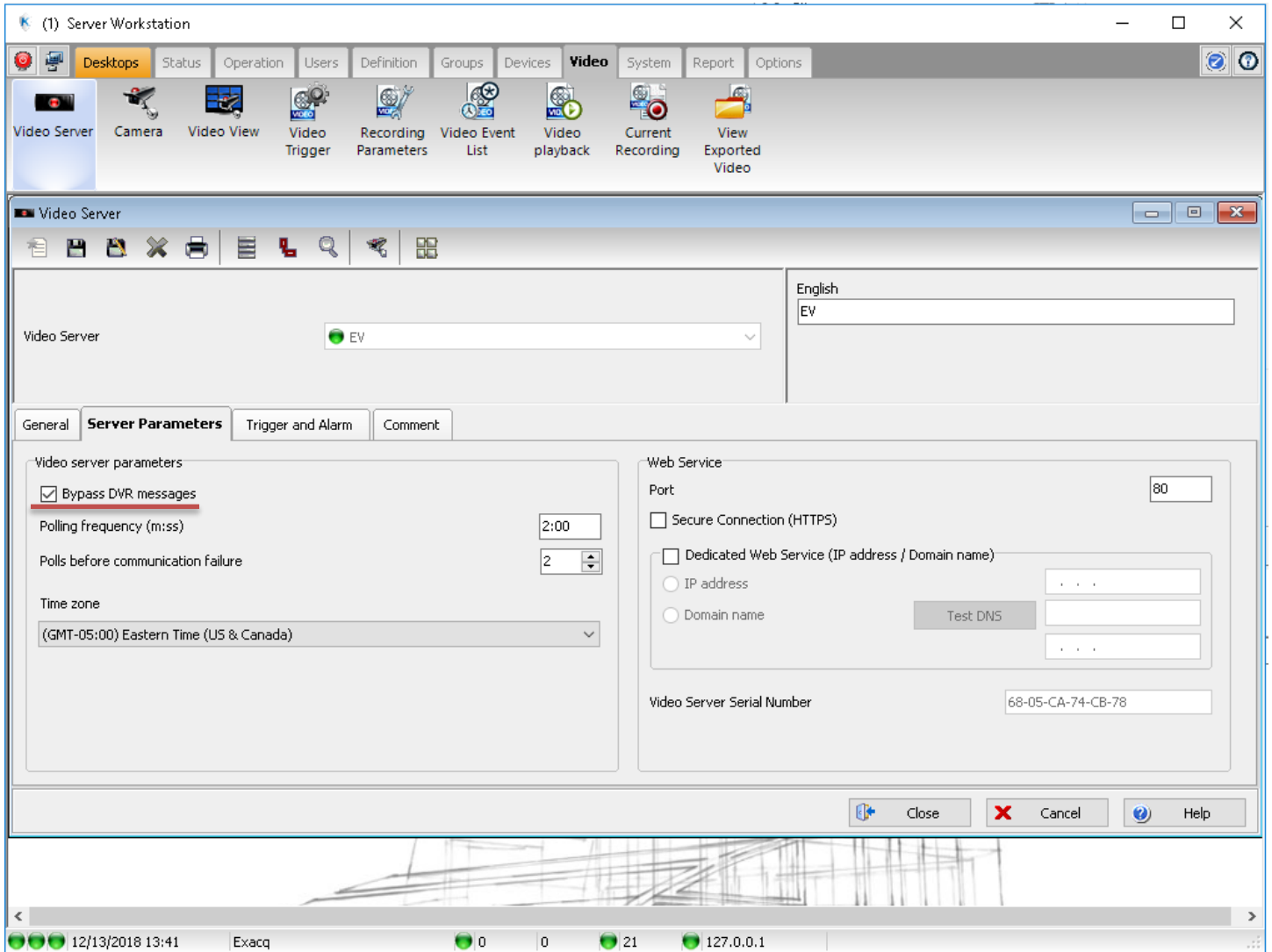


15. Verify that the number of cameras detected is correct (in this example, 1 was detected).
16. Click Save
17. Click Close.



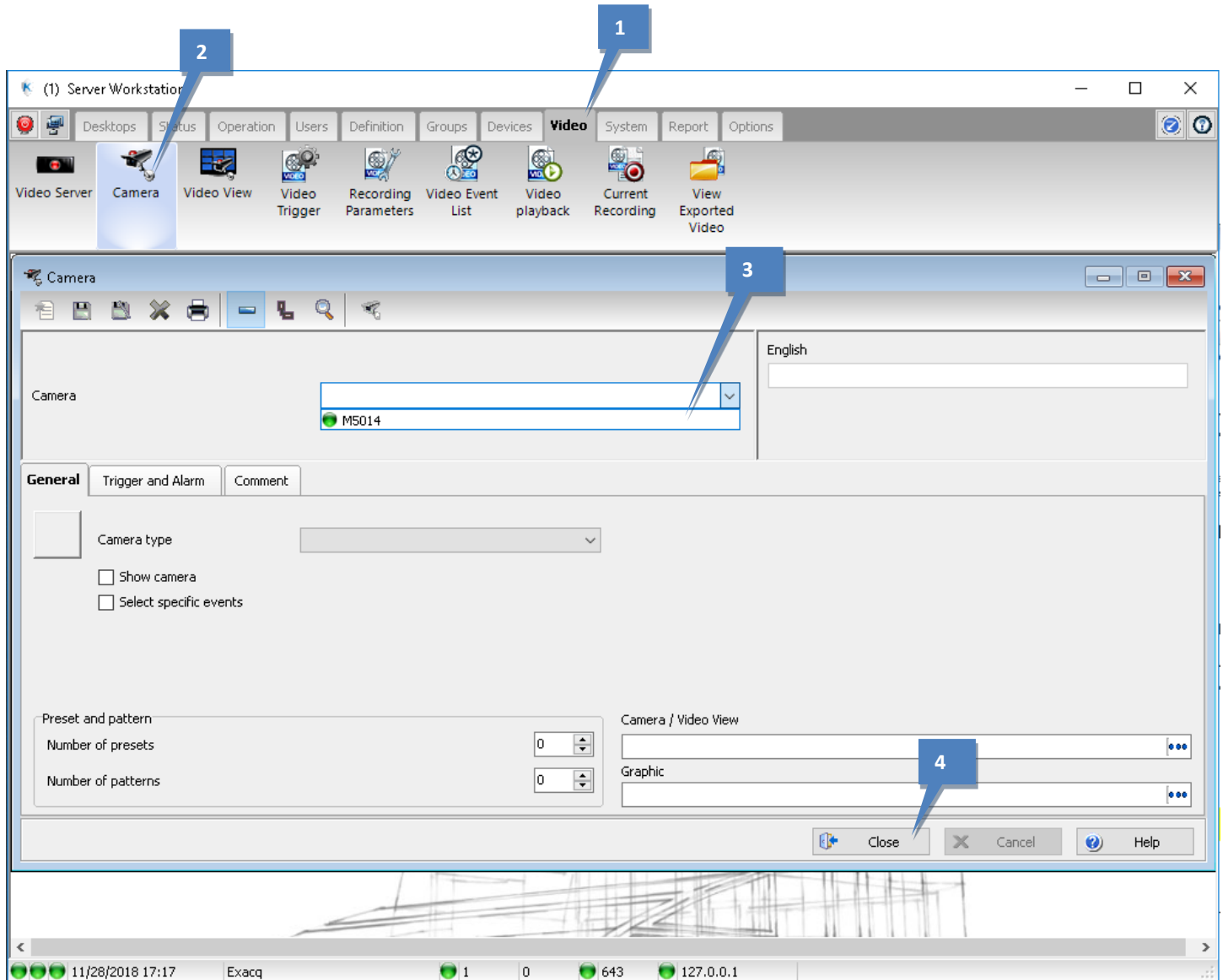
Note:

To limit the overflow of notifications in the event list, you can select the “Bypass DVR Messages” option in the Server Parameters tab. This is entirely optional.



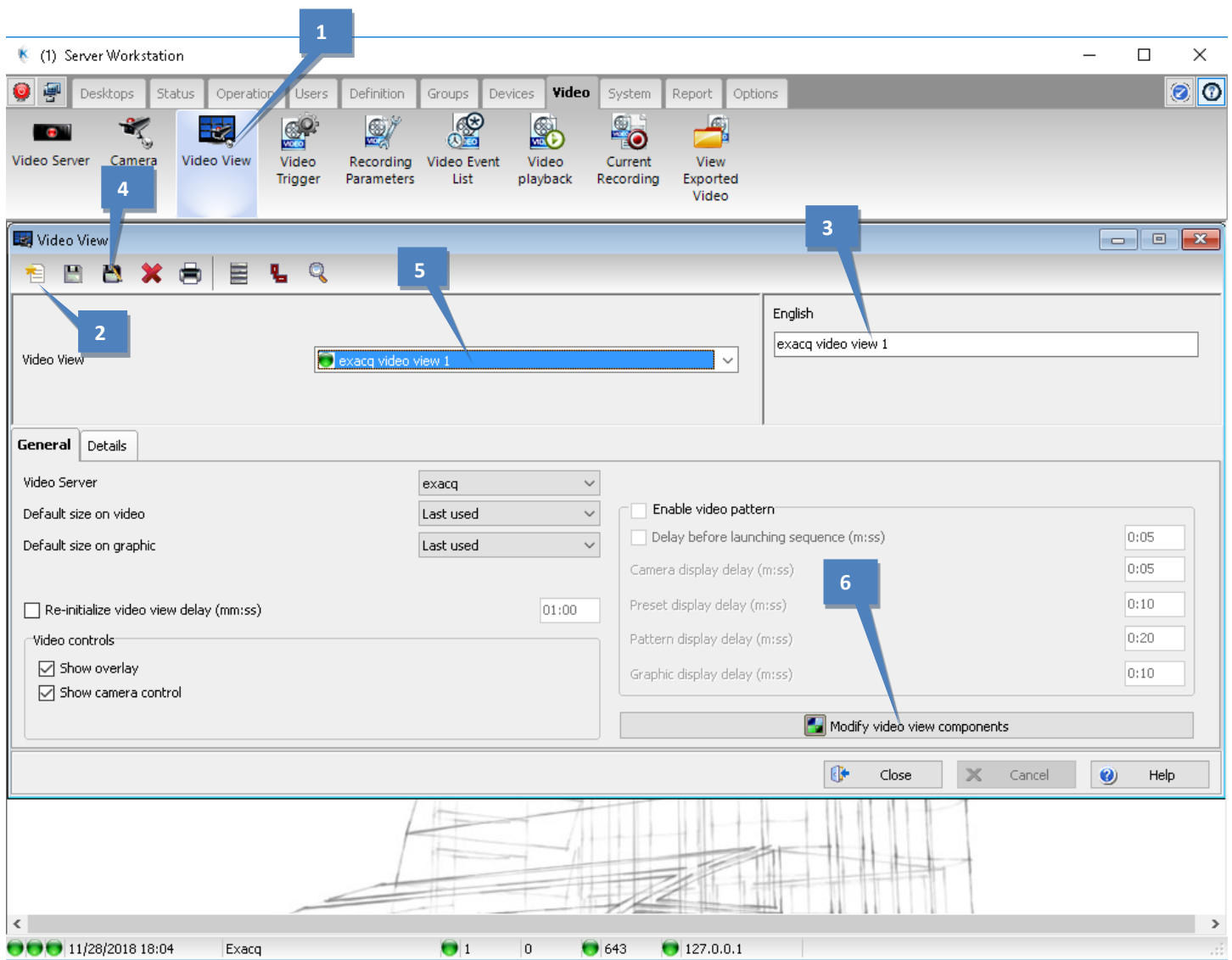
Verify camera detection

1. Select the Video tab.
2. Click Camera.
3. Verify that the cameras are correctly displayed in the Camera drop down list.
4. Click Close.

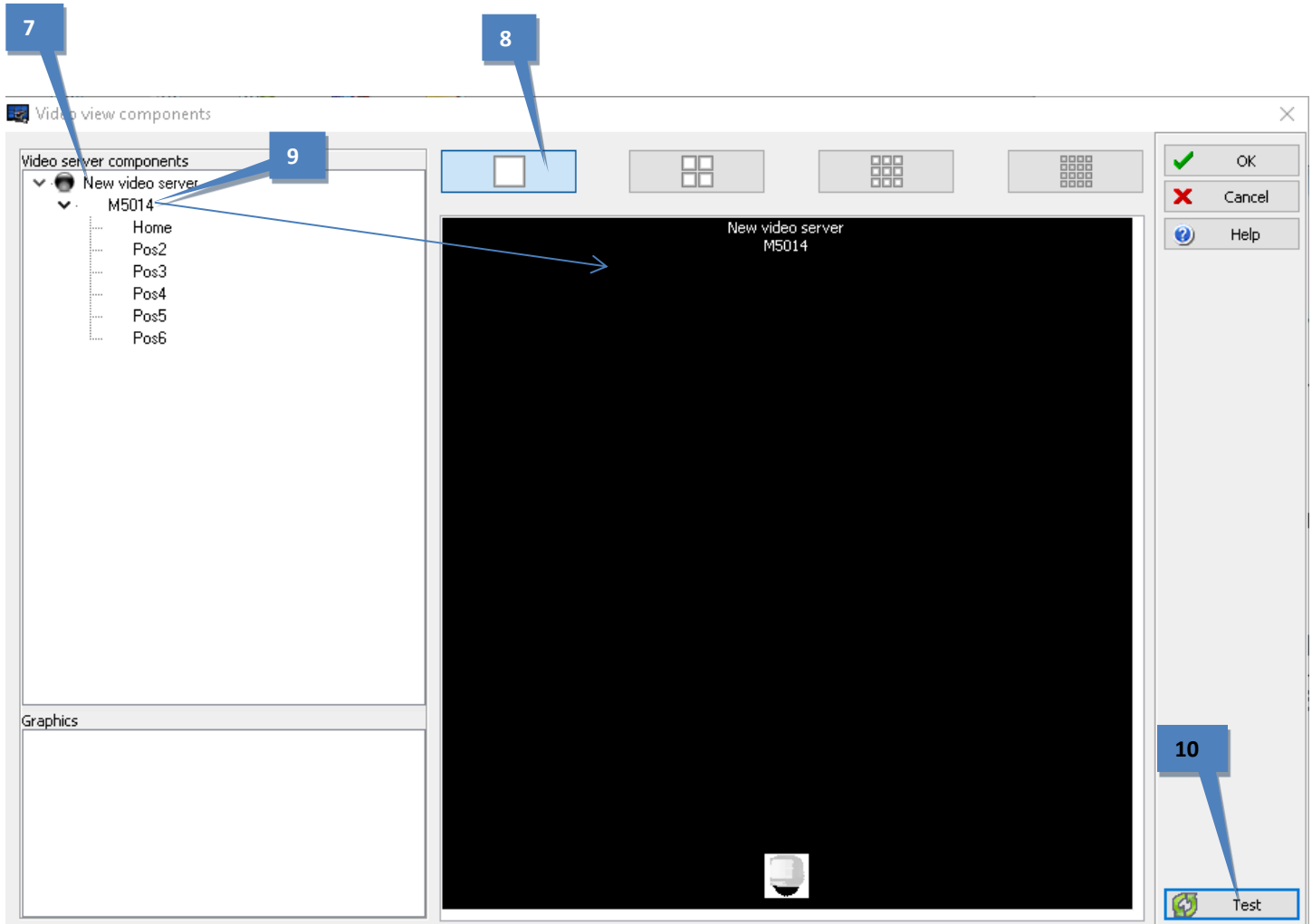


Create a view and verify live video

1. Click Video View.
2. Click New.
3. Enter a name.
4. Click Save.
5. The name is now displayed in the Video View field.
6. Click Modify Video View Components.

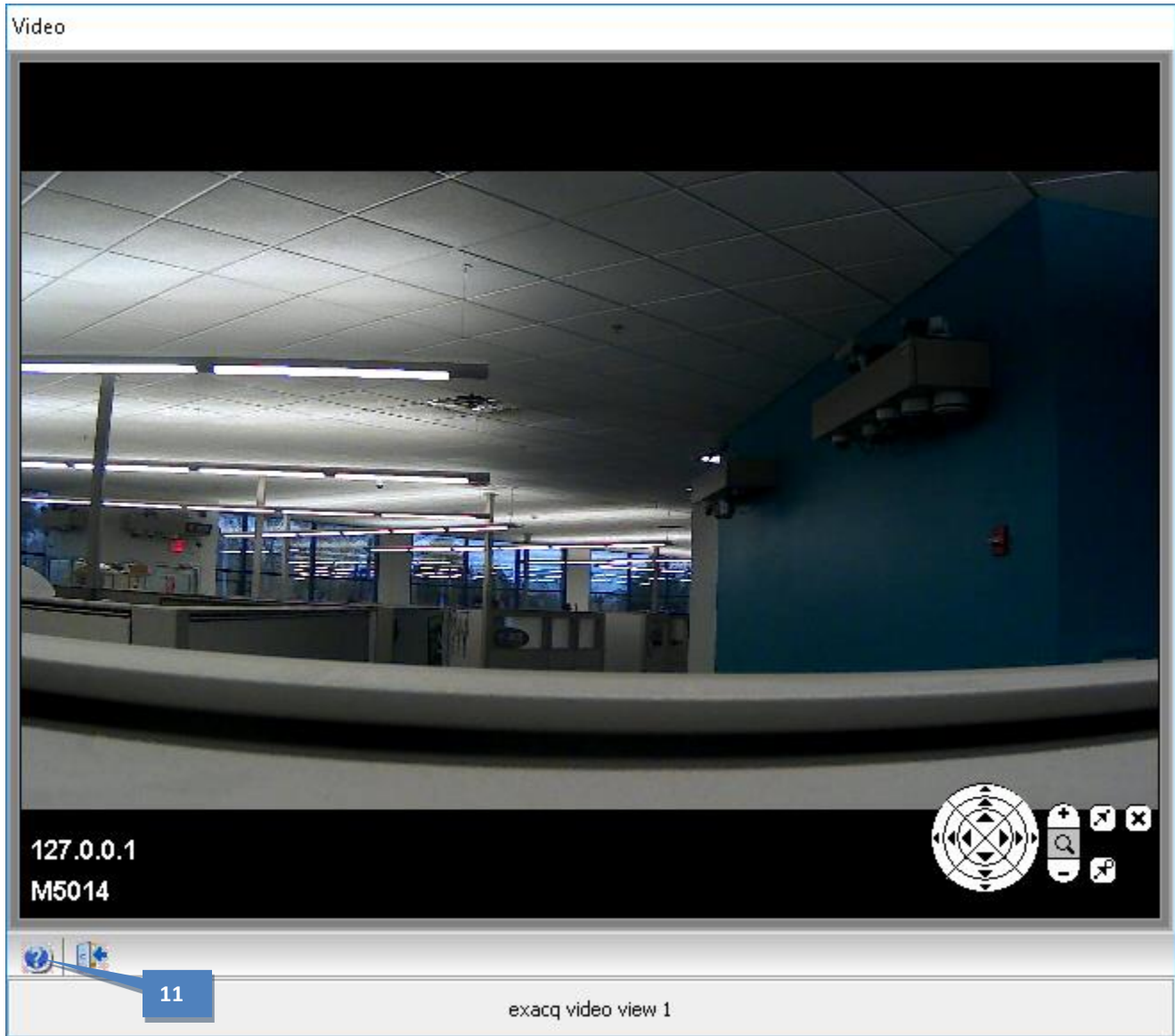


7. On the Video View Components page, verify that the list of components is correct.
8. Choose an appropriate number of camera panes.
9. Click and drag some cameras onto the panes.
10. Click Test.



A window displaying live feeds is displayed. This verifies that the cameras are configured correctly.

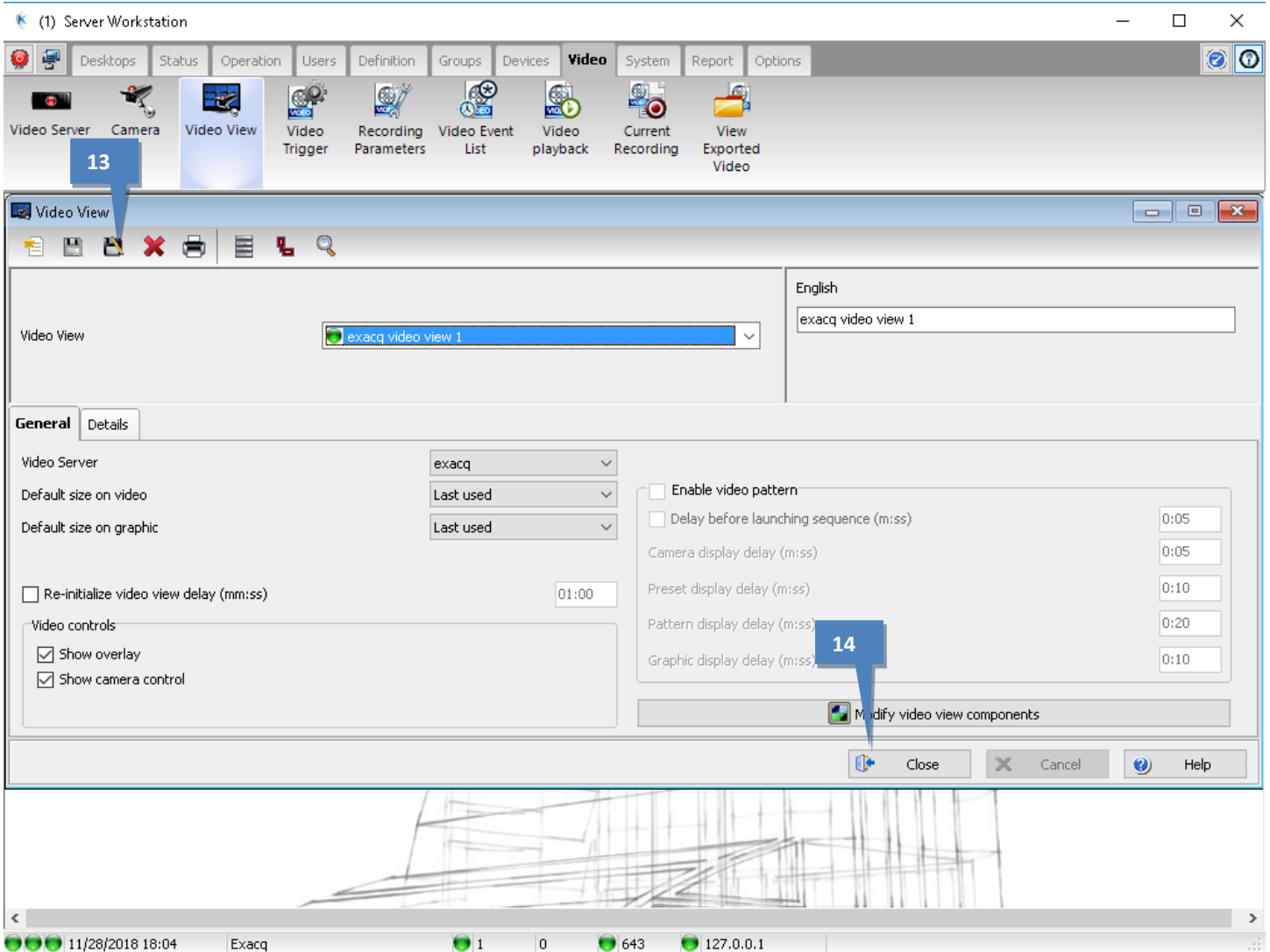
- 11. Click the door icon at the bottom to close.



12. Click OK on the Video view components window



13. Click Save.
14. Click Close.

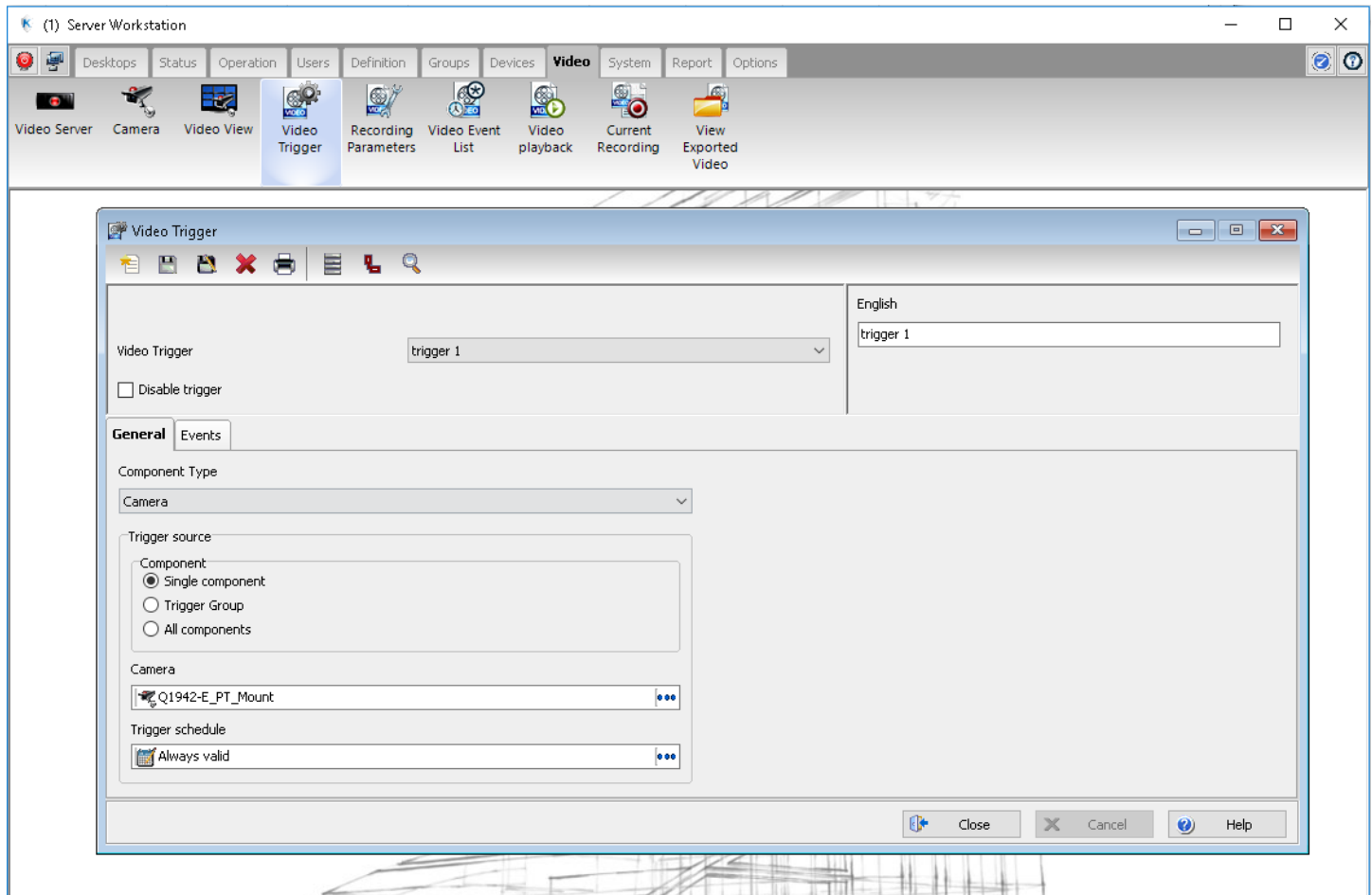


Conclusion

Now the exacqVision system has been integrated with Kantech Entrypass. Many features are now available to you, including configuring event triggers in Entrypass that will create soft triggers in the exacqVision client. These soft triggers can be used to implement any of the event codes shown at the bottom of this document.

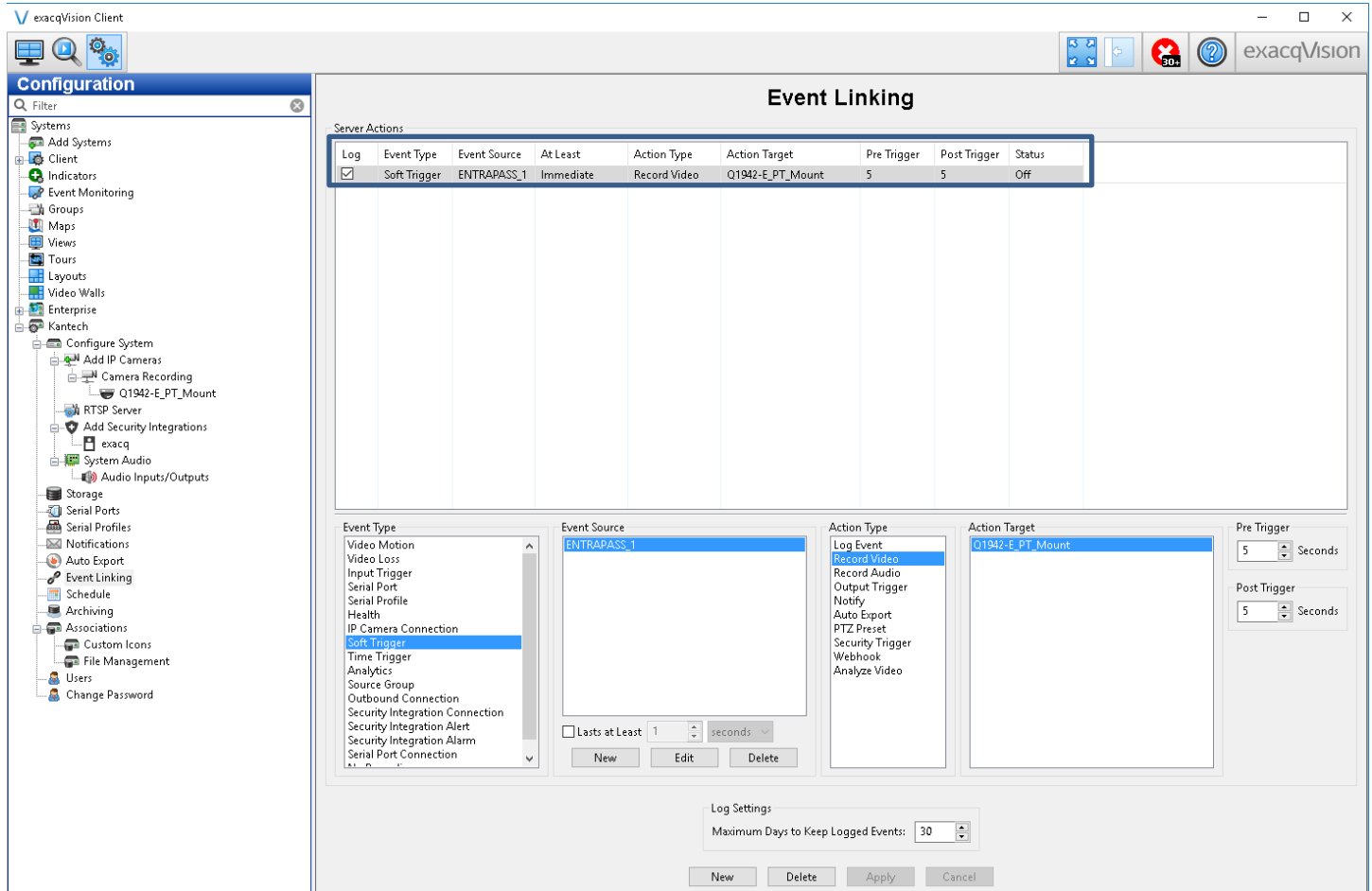
Creating Soft Triggers

When **Video Triggers** are configured in the Entrypass Workstation, a soft trigger is automatically created in exacqVision. This will only appear once your chosen component event is triggered. Check the *Event* tab for options for each *Component* available.



For example, setting up a “Camera Motion Activated” event in Kantech Entrapass will result in a soft trigger appear in *Event Linking* in the exacqVision Client like you see here.

(Note: The Event Source, automatically named here as “ENTRAPASS_1”, can be renamed using the Edit button under the Event Source section.)



More On Installation and Setup

Kantech Entrapass Corporate Edition User Manuals found [HERE](#).

Also see our Installation Guide (Kantech OnBoard systems only) found [HERE](#).

Contact info and Support

Kantech Support (Technical Support, Customer Service, Sales, and more)

<http://www.kantech.com/Support/ContactDefault.aspx>

Exacq Support (Technical Support, Training tools, and more)

<https://exacq.com/support/>

exacqVision Event Triggering

Any access control event in EntraPass can be programmed to actuate soft triggers in exacqVision. If the soft trigger does not exist on the exacqVision server, or if it has been deleted, EntraPass will create a new soft trigger and associated event link to start the recording. For more detail on how to configure these, refer to Kantech Support or the Entrapass Corporate Edition user manual.

- Access - Door unlocked
- Access - Second entrance
- Access denied
- Access denied - Alarm system armed
- Access denied - Area full
- Access denied - Area not clear
- Access denied - Bad access level
- Access denied - Bad card status
- Access denied - Card already busy
- Access denied - Card expired
- Access denied - Card lost or stolen
- Access denied - Card not load in controller
- Access denied - Card pending
- Access denied - Card unknown
- Access denied - Disabled tenant
- Access denied - Door armed - alarm interface
- Access denied - Door manually disabled
- Access denied - Dual custody
- Access denied - Interlock active
- Access denied - Invalid access schedule
- Access denied - Keypad disabled
- Access denied - Keypad locked
- Access denied - local area full
- Access denied - Minimum passback delay
- Access denied - Not enough cards
- Access denied - Number supervisor/area
- Access denied - Passback bad location
- Access denied - Reach card count (Card count limit reached)
- Access denied - Reader or keypad locked
- Access denied - Supervisor level required
- Access denied - Tenant card unknown
- Access denied - Tenant expired
- Access denied - Tenant not loaded in KTES
- Access denied - Tenant pending
- Access denied - Waiting for approval
- Access denied - Waiting second card
- Access denied by tenant
- Access door unlocked (Tenant)
- Access granted
- Access granted - Passback bad location
- Access granted (Tenant)
- Access granted by tenant
- Access level definition modified
- Access level group definition modified
- Access process completed
- Account modified
- Acknowledge
- Acknowledge suspended
- Acknowledge time-out
- Add site to connection list
- Alarm duress
- Alarm duress on door
- Alarm key alarm
- Alarm key alarm restore
- Alarm log added
- Alarm message flag
- Alarm message unflag
- Alarm supervision - reader found
- Alarm system activated
- Alarm system armed
- Alarm system armed (Alarm level 1 active)
- Alarm system armed (Alarm level 2 active)
- Alarm system deactivated
- Alarm system disarmed
- Alarm system force arming device alarm reported
- Alarm system input shunted - entry delay
- Alarm system input unshunted - entry delay
- Alarm system manually armed
- Alarm system manually disarmed
- Alarm system modified
- alarm system not ready - alarm interface
- alarm system ready - alarm interface
- Alarm system relay activated
- Alarm system relay deactivated
- Application automatic update
- Archive backup automatic
- Archive backup automatic - Completed
- Archive backup automatic - Failed
- Archive backup by operator
- Archive merged from redundancy server
- Archive restored by operator
- Archive restored from redundancy server
- Area closed
- Area definition modified
- Area full
- Area group modified
- Area not full
- Area opened
- Area status request

- Arming aborted
- Arming postponed
- Automatic report requested
- Auxiliary action by tenant
- Auxiliary output definition modified
- Bad code on keypad
- Bad login on Server
- Bad Login on Smartlink
- Bad Login on Workstation
- Bad sequence - guard tour
- Badging layout modified
- Begin reloading, GSI procedure
- Begin reloading, Server procedure
- Beginning of a guard tour
- Billing report created
- Broadcast IP device succeeded waiting for heartbeat
- Browse Video Vault
- Call aborted by visitor
- Calling tenant
- Camera advanced motion alarm activated
- Camera advanced motion alarm restored
- Camera alarm activated
- Camera alarm restored
- Camera light alarm activated
- Camera light alarm restored
- Camera modified
- Camera motion alarm activated
- Camera motion alarm restored
- Camera museum activated
- Camera museum restored
- Camera override activated
- Camera override restored
- Camera perimeter activated
- Camera perimeter restored
- Camera tamper alarm activated
- Camera tamper alarm restored
- Camera text alarm activated
- Camera video lost
- Camera video restored
- Cannot process card on Card Gateway
- Card Access Group modified
- Card access level expired
- Card Archive modified
- Card definition modified
- Card expired
- Card filter modified
- Card location in bad area
- Card pending on service
- Card position manually modified
- Card traced
- Card Type modified
- Cards counter In - Out
- Cards exported
- Change automatic backup parameters
- Change badge printout credential
- Change card format
- Change card label
- Change keypad family
- Change log printer
- Change MAC account billing information
- Change master password
- Change operating language
- Change priority from connection list
- Change programmables messages
- Change Sound and Video parameters
- Change system parameters
- Clean Server database
- Clear connection list
- Cluster modified
- Connect this site next
- Connection for site synchronisation
- Controller AC power failed
- Controller AC power restored
- Controller Auxiliary power failure
- Controller Auxiliary power restored
- Controller battery power failure
- Controller battery power restored
- Controller cards list cancelled by operator
- Controller cards list requested by operator
- Controller cards moved by operator
- Controller communication failed
- Controller communication failure with Aurora
- Controller communication failure with MCU
- Controller communication restored
- Controller communication restored with Aurora
- Controller communication restored with MCU
- Controller date time RTC reading failure
- Controller date time RTC reading restore
- Controller DC power failed
- Controller DC power restored
- Controller definition modified
- Controller detailed status requested by operator
- Controller eeprom reading failure
- Controller execute program memory startup
- Controller execute program parity failure
- Controller firmware
- Controller firmware reload start
- Controller group definition modified
- Controller group hard reset by operator
- Controller group reload by operator
- Controller group soft reset by operator
- Controller hard reset by operator
- Controller lock power failed
- Controller lock power restored

- Controller module AC power failure
- Controller module AC power restored
- Controller module auxiliary power failure
- Controller module auxiliary power restored
- Controller module battery power failure
- Controller module battery power restored
- Controller module bell output failure
- Controller module bell output restored
- Controller module combus power failure
- Controller module combus power restored
- Controller module communication failure
- Controller module communication restore
- Controller module data received
- Controller module end transmission
- Controller module failure
- Controller module ground detect alarm
- Controller module ground detect restored
- Controller module input class A alarm
- Controller module input class A alarm restored
- Controller module input class A trouble
- Controller module input class A trouble restored
- Controller module input class B alarm
- Controller module input class B alarm restored
- Controller module input class B trouble
- Controller module input class B trouble restored
- Controller module off line
- Controller module on line
- Controller module phone line #1 failure
- Controller module phone line #1 restored
- Controller module phone line #2 failure
- Controller module phone line #2 restored
- Controller module restored
- Controller module tamper alarm
- Controller module tamper restored
- Controller module trouble
- Controller module trouble restore
- Controller module/combus power failure
- Controller module/combus power restored
- controller not assigned requested by operator
- Controller or module not assigned
- Controller passback forgiven by operator
- Controller power supply restored
- Controller power supply trouble
- Controller pre-alarm AC power failure
- Controller pre-alarm AC power restored
- Controller reader power control restored
- Controller reader power control trouble
- Controller reader power failure
- Controller reader power reset by operator
- Controller reader power restored
- Controller reader/keypad unlocked by operator
- Controller reload failure
- Controller reloaded by operator
- Controller slave communication failure
- Controller slave communication restored
- Controller soft reset by operator
- Controller startup
- Controller successfully reloaded
- Controller trouble
- Controller trouble restored
- Create a daypass card
- Data backup automatic
- Data backup automatic - Completed
- Data backup automatic - Failed
- Data backup by operator
- Data merged from redundancy server
- Data restored by operator
- Data restored from redundancy server
- Date and time modified
- Decrement card counter
- Device connection denied, Unknown MAC address
- Device low battery 4204
- Device reloading data by operator
- Disconnect modem
- Disconnect remote site
- Door alarm - alarm interface
- Door alarm on re-lock
- Door alarm restored- alarm interface
- Door armed - alarm interface
- Door armed by operator
- Door closed/normal condition
- Door contact disabled by operator
- Door contact disabled by operator
- Door contact enabled by operator
- Door contact returned to schedule by operator
- Door definition modified
- Door Disarmed - alarm interface
- Door disarmed by operator
- Door entry delay end - alarm interface
- Door entry delay start - alarm interface
- Door exit delay end - alarm interface
- Door exit delay start - alarm interface
- Door forced alarm
- Door forced alarm restore
- Door forced open
- Door forced open restored
- Door group armed by operator
- Door group contact disabled by operator
- Door group contact disabled by operator
- Door group contact enabled by operator
- Door group contact returned to schedule by operator
- Door group definition modified
- Door group disarmed by operator
- Door group lock by input

- Door group locked by operator
- Door group one time access by operator
- Door group returned to schedule by operator
- Door group temporarily unlocked by operator
- Door group unlock by input
- Door group unlocked by operator
- Door lock by alarm system armed
- Door lock by input
- Door lock device failure
- Door lock device normal condition
- Door locked by alarm system armed
- Door locked by operator
- Door locked by schedule
- Door one time access by operator
- Door open too long
- Door Reader keypad activation by keypad key
- Door relock
- Door returned to schedule by operator
- Door temporarily unlocked by operator
- Door toggle by operator
- Door unlock by input
- Door unlocked by event
- Door unlocked by operator
- Door unlocked by schedule
- Door unlocked temporarily by event
- Double swipe action denied
- Double swipe action granted
- Duress alarm
- Elevator door floor group disabled by operator
- Elevator door floor group enabled by operator
- Elevator door group group floor group disabled by operator
- Elevator door group group floor group enabled by operator
- Elevator interface failure
- Elevator interface override disabled
- Elevator interface override enabled
- Elevator interface restore
- End reloading, GSI procedure
- End reloading, Server procedure
- End Server
- End Workstation
- End Workstation Server abnormal disconnection
- End Workstation Server normal disconnection
- Ending of a guard tour
- Enroll a connection on Server
- Entry delay
- Entry delay expired
- Error reloading, GSI procedure
- Error reloading, Server procedure
- Event buffer full at 70 percent
- Event buffer overflow
- Event parameter definition modified
- Event relay definition modified
- Exit delay
- Export video request
- External command
- External NCC stopped by operator
- Failed to reach IP device
- Failsoft mode off
- Failsoft mode on
- Fire key alarm
- Fire key alarm restore
- Floor definition modified
- Floor group activated by input
- Floor group activation by input denied
- Floor group definition modified
- Floor group manually disabled
- Floor group manually enabled
- Graphic definition modified
- GSI definition modified
- Guard tour alarm
- Guard tour definition modified
- Guard tour late time delay modified
- Guard tour scheduled
- Guard tour sequence modified
- Guard tour station
- Guard tour station late
- Hard reset controller
- Historical report definition modified
- Holiday definition modified
- Home automation trouble
- Increment card counter
- Initialize modem
- Input activated
- Input activated 'Return to service'
- Input continuous supervision by operator
- Input deactivated
- Input definition modified
- Input group continuous supervision by operator
- Input group definition modified
- Input group return to normal by operator
- Input group return to schedule by operator
- Input group reverse condition by operator
- Input group shunted by input
- Input group shunted by operator
- Input group shunted temporarily by operator
- Input group unshunted by input
- Input in alarm
- Input in alarm 'Return to service'
- Input in pre-alarm
- Input in trouble
- Input restored or in normal condition
- Input return to normal by operator
- Input return to schedule by operator
- Input reverse condition by operator

- Input shunt toggle by operator
- Input shunted by input
- Input shunted by operator
- Input shunted on disarm - alarm interface
- Input shunted on entry delay - alarm interface
- Input shunted on exit delay - alarm interface
- Input shunted temporarily
- Input shunted temporarily by operator
- Input tamper in alarm
- Input tamper restored
- Input trouble restored
- Input unshunted
- Input unshunted by input
- Input unshunted on disarm - alarm interface
- Input unshunted on entry delay - alarm interface
- Input unshunted on exit delay - alarm interface
- Input unshunted temporarily
- Instruction definition modified
- Invalid family card
- Invalid floor selection
- Invalid keypad code
- IP device - Update platform
- IP device communication failed
- IP device communication restored
- KAP Expiry Reminder
- KT-400 firmware manual flashing by operator
- KTES alarm duress
- KTES call not initialize by do not disturb option
- KTES custom language reload
- KTES local database modified
- KTES VUI programming access denied
- KTES VUI programming access granted
- KTES VUI programming exit
- KTES VUI programming invalid keypad code
- KT-NCC - AC power failure
- KT-NCC - AC power restored
- KT-NCC - AC power supply trouble
- KT-NCC - Auxiliary power failure
- KT-NCC - Auxiliary power restored
- KT-NCC - Battery not connected
- KT-NCC - Battery power critical
- KT-NCC - Battery power failure
- KT-NCC - Battery power restored
- KT-NCC - Event buffer normal
- KT-NCC - Event buffer overflow
- KT-NCC - Hard reset by operator
- KT-NCC - Relay activated by an event
- KT-NCC - Relay deactivated by an event
- KT-NCC - Relay temporarily activated by an event
- KT-NCC - Shutdown on critical low battery
- KT-NCC - Soft reset by operator
- KT-NCC - Tamper in alarm
- KT-NCC - Tamper restored
- KT-NCC - Update platform CE
- Last station in guard tour
- Login on Server
- Login on Smartlink
- Login on Workstation
- Logout on Server
- Logout on Smartlink
- Logout on Workstation
- Loop communication failure
- Loop communication restore
- Loop communication trouble
- Loop definition modified
- Macro maker manually executed
- Macro maker modified
- Manual log add by operator
- Master Account modified
- Message view definition modified
- Modem site bad UCK
- Modem site callback failed
- Modem site callback on buffer
- Modem site callback on schedule
- Modem site callback priority call
- Modem site connection
- Modem site connection failed
- Modem site connection time
- Modem site disconnection
- Modem site dial
- Modem site fail to report
- Modem site first initialisation
- Modem site invalid command
- Modem site wait for callback
- Modify an enroll connection on Server
- Muster report modified
- NCC communication failed
- NCC communication restored
- NCC program updating
- New video search
- No dial tone
- No response from tenant
- NTM definition modified
- Operator definition modified
- Operator disabled
- Panel AC trouble
- Panel AC trouble restore
- Panel Battery trouble
- Panel Battery trouble restore
- Panel Communication failure
- Panel Communication restore
- Panel component modified
- Panel modified
- Partition alarm

Partition alarm key alarm	Relay activated by full area
Partition alarm key alarm restore	Relay activated by input
Partition fire key alarm	Relay activated by open area
Partition fire key alarm restore	Relay activated by operator
Partition manually armed	Relay activated by schedule
Partition police key alarm	Relay deactivated after temporarily action
Partition police key alarm restore	Relay deactivated by alarm system
Phone line busy	Relay deactivated by an event
Phone line failure	Relay deactivated by close area
Phone line failure	Relay deactivated by input
Phone line restore	Relay deactivated by not full area
Phone line restored	Relay deactivated by operator
Playback request	Relay deactivated by schedule
Police key alarm	Relay definition modified
Police key alarm restore	Relay group activated by alarm system
Postal lock request denied by interlock	Relay group activated by an event
Postal lock request denied by schedule	Relay group activated by full area
Postal lock request granted	Relay group activated by input
Postponement delay manually modified	Relay group activated by open area
Pre-Alarm on Door Open Too Long	Relay group activated by operator
Programmable message #1	Relay group deactivated by alarm system
Programmable message #10	Relay group deactivated by an event
Programmable message #2	Relay group deactivated by close area
Programmable message #3	Relay group deactivated by input
Programmable message #4	Relay group deactivated by not full area
Programmable message #5	Relay group deactivated by operator
Programmable message #6	Relay group definition modified
Programmable message #7	Relay group returned to schedule by operator
Programmable message #8	Relay group temporarily activated by alarm system
Programmable message #9	Relay group temporarily activated by an event
Quick report request by operator	Relay group temporarily activated by input
Reader disabled by operator	Relay group temporarily activated by operator
Reader enabled by operator	Relay returned to schedule by operator
Reader group disabled by operator	Relay temporarily activated by alarm system
Reader group enabled by operator	Relay temporarily activated by an event
Reader low power	Relay temporarily activated by door access extended delay
Reader low power restored	Relay temporarily activated by input
Reader or Keypad locked	Relay temporarily activated by keypad key
Reader or Keypad unlocked	Relay temporarily activated by operator
Reader restarted	Relay toggle by operator
Reader's antenna - back to back voltage	Remaining time remove by operator
Reader's antenna - no voltage	Remove from connection list
Reader's antenna - normal voltage	Report aborted
Rebuild Card Last Transaction file	Report aborted not enough free disk space
Recording parameters modified	Report request by operator
Recording requested by operator	Report successfully completed
Redundancy Server Shutdown	Request to arm denied - alarm interface
Registration connection failed	Request to arm granted - alarm interface
Registration connection granted	Request to disarm - alarm interface
Registration requested	Request to exit denied
Relay activated by alarm system	Request to exit denied by Interlock
Relay activated by an event	Request to exit granted

- Request to postpone denied - alarm interface
- Request to postpone granted - alarm interface
- Reset global interlock by operator
- Reset modem
- Roll call report modified
- Schedule definition modified
- Security level definition modified
- Server Communication Failed
- Server Communication Restored
- Server notification
- Server shutdown by workstation
- Set card counter
- Site definition modified
- Smartlink command
- Smartlink operator switch to an account
- Smartlink security issue
- Soft reset controller
- Start recording by video trigger
- Start recording requested by operator
- Start Server
- Start Workstation
- Start Workstation Server connection
- Stop recording by timer
- Stop recording by video trigger
- Stop recording requested by operator
- Supervision restored - reader found
- Swap database description
- System Bell alarm in trouble
- System Bell alarm trouble restore
- System status request
- System tamper
- System tamper restore
- Tamper switch in alarm
- Tamper switch in alarm
- Tamper switch restored
- Tamper switch restored
- Tenant group modified
- Tenant traced
- Time and Attendance backup automatic
- Time and Attendance backup automatic - Completed
- Time and Attendance backup automatic - Failed
- Time and Attendance backup by operator
- Time and attendance entry
- Time and attendance exit
- Time and attendance manually modified
- Time and attendance merged from redundancy server
- Time and attendance report modified
- Time and Attendance restored by operator
- Time and attendance restored from redundancy server
- Time-out on access granted
- Timeout on access granted (Tenant)
- Timeout on access granted by tenant
- Time-out on floor selection
- Time-out on keypad
- Timeout on manually unlock
- Timeout on postal lock request
- Timeout on REX
- Timeout on waiting second card
- TLM Line 1 trouble
- TLM Line 1 trouble restore
- TLM Line 2 trouble
- TLM Line 2 trouble restore
- Transfert firmware files
- Trigger group modified
- Trigger modified
- Triple swipe action denied
- Triple swipe action granted
- Two-wire smoke alarm
- Two-wire smoke alarm restore
- Two-wire smoke trouble
- Two-wire smoke trouble restore
- Unlock overridden by door armed
- Update all site
- Update data to site
- Valid floor selection
- Verify Database Hierarchy On Server
- Verify Database Index On Server
- Verify Database Integrity On Server
- Verify database integrity on Workstation
- Verify Database Link On Server
- Video event backup automatic
- Video event backup automatic - Completed
- Video event backup automatic - Failed
- Video event backup by operator
- Video event merged from redundancy server
- Video event restored by operator
- Video event restored from redundancy server
- Video failed to saved
- Video record modified
- Video sent to Video Vault by operator
- Video Server archive disabled by operator
- Video Server archive enabled by operator
- Video Server communication failed
- Video Server communication restored
- Video Server modified
- Video Server special report
- Video trigger modified
- Video Vault no more disk space
- Video Vault reach disk space threshold
- Video View modified
- View active report
- View Command Log On Server
- View Connection On Server
- View current recording

View data explorer
View Error Log On Server
View Workstation status
Waiting for keypad
Waiting second card
Waterflow alarm
Waterflow alarm restore
Waterflow trouble
Waterflow trouble restore
Wireless button battery power failure
Wireless button battery power restored
Wireless button selection number
Wireless key low battery trouble
Wireless key low battery trouble restore
Workspace modified
Workstation lock by operator
Workstation operator switch to an account
Workstation unlock by operator
Zone alarm
Zone alarm restore
Zone fault
Zone fault restore
Zone tamper
Zone tamper restore