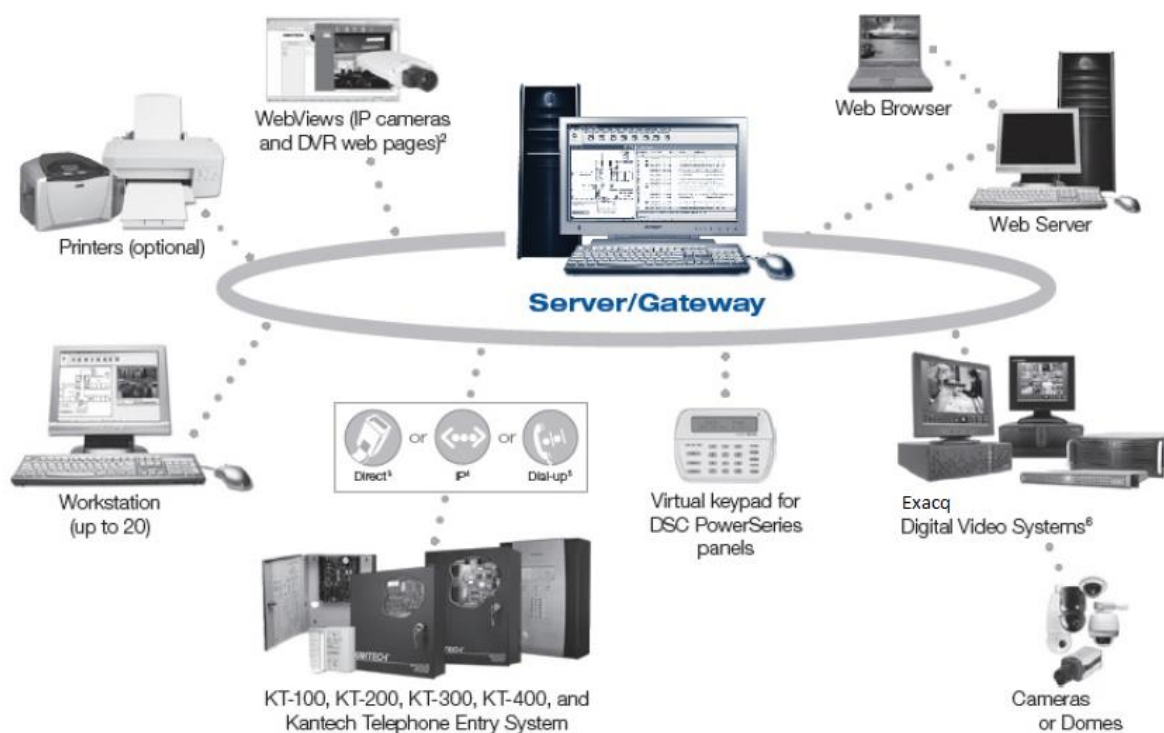


Create an exacqVision Video View in Entrapass Web

Description

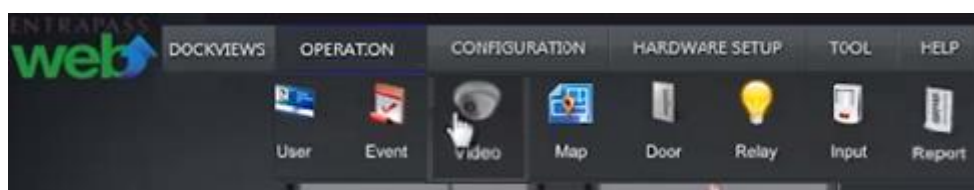
Creating a view enables Entrapass to interact with cameras from exacqVision.

This diagram illustrates a generalized interaction between a Kantech & Exacq Server.



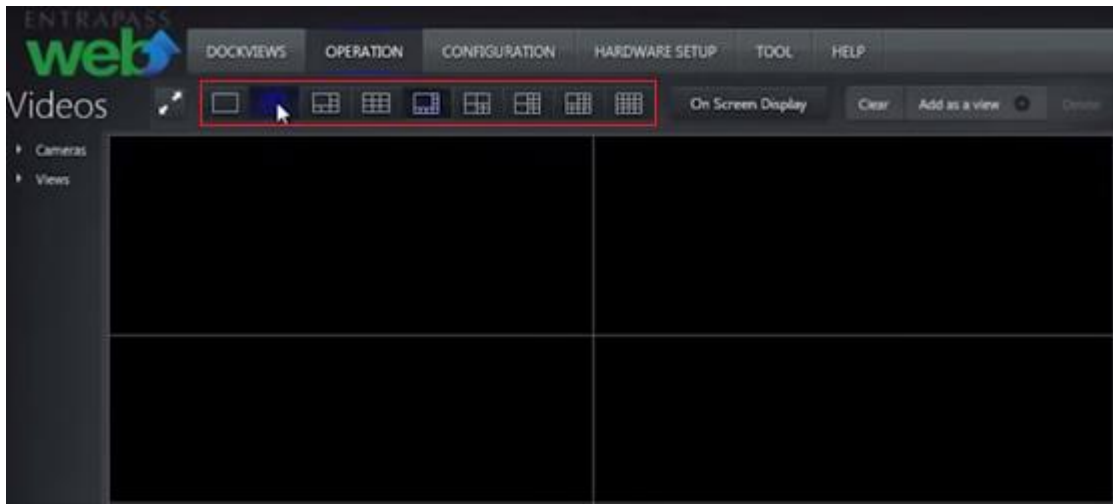
Entrapass Web

1. Navigate to the *Operation* menu and select *Map*

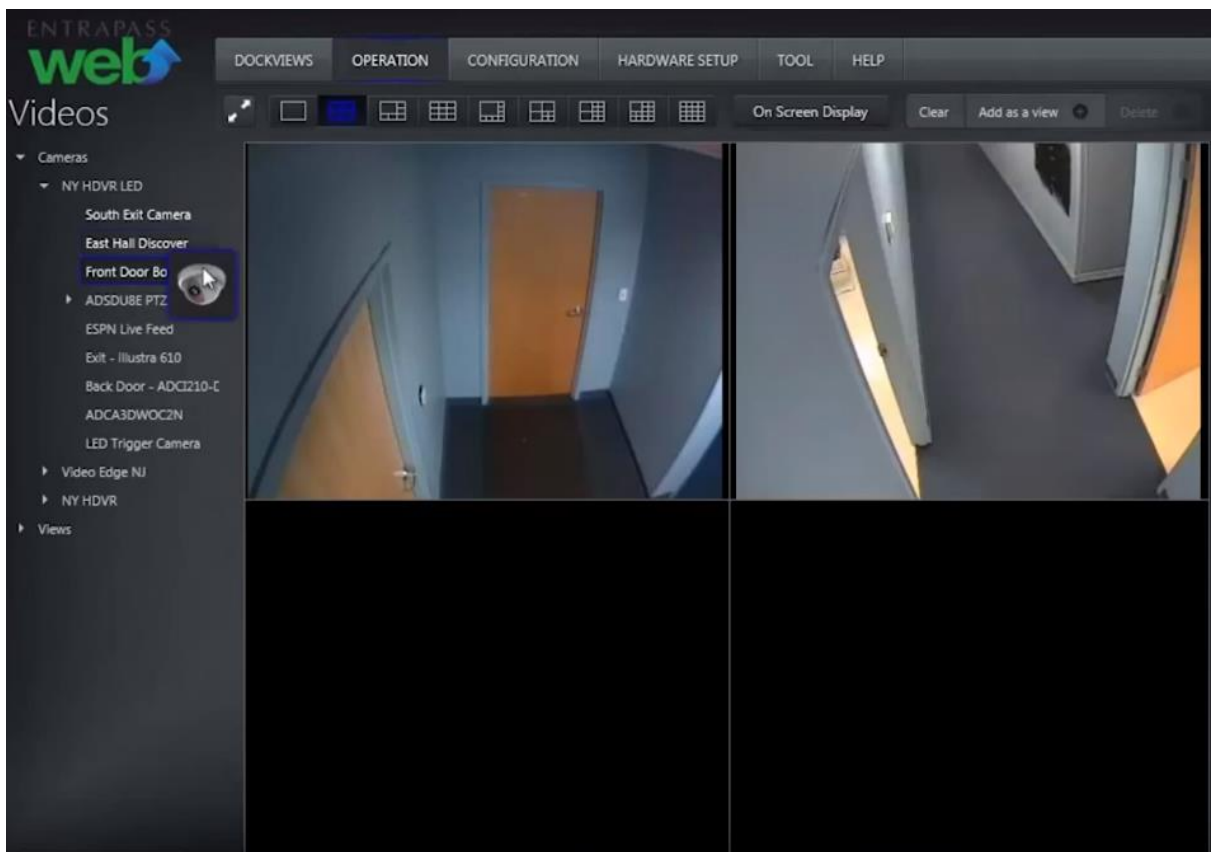


exacqVision Support Portal

2. Select a video view layout template.

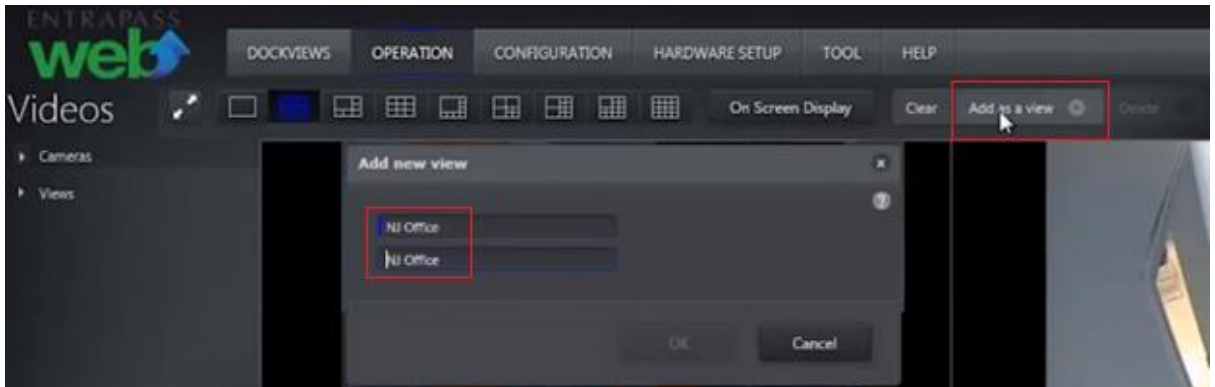


3. Drag and drop cameras from exacqVision to the video view template.



4. Click *Add as a View* button and give the new video view a name.
A new video view has been created with cameras from exacqVision.

exacqVision Support Portal



5. To display a video view, drag and drop its name from the *Views* category over any layout.

