

Create a Map in Entrapass Web

Description

Creating maps allow you to visually interact with all system components such as:

relays, inputs, outputs, keypads, elevators, doors, cameras, workstations, sites, gateways and controllers.

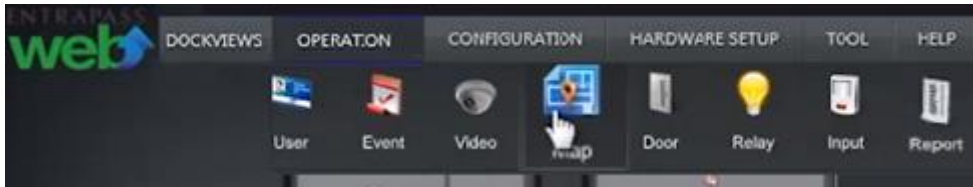
This diagram illustrates a typical Kantech Entrapass Server and System Component architecture.



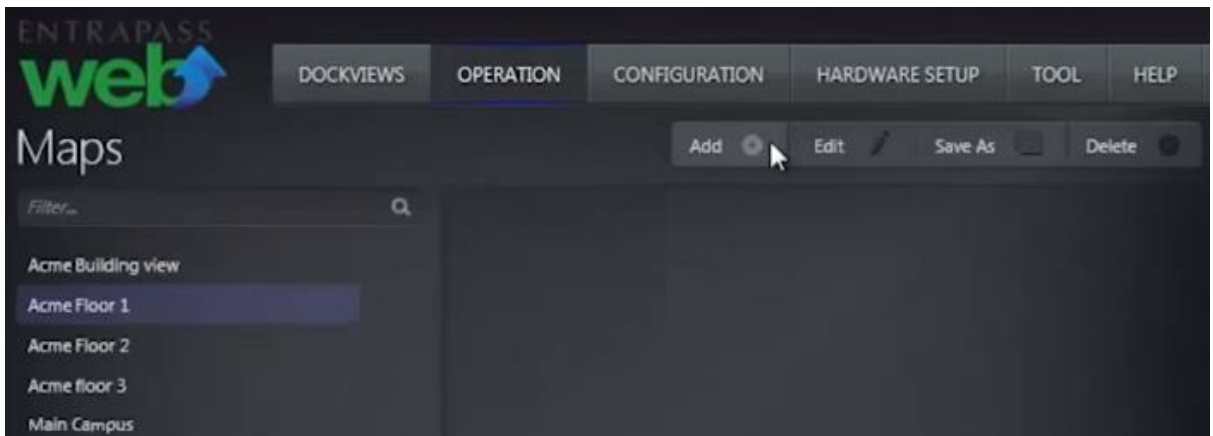
Entrapass Web

exacqVision Support Portal

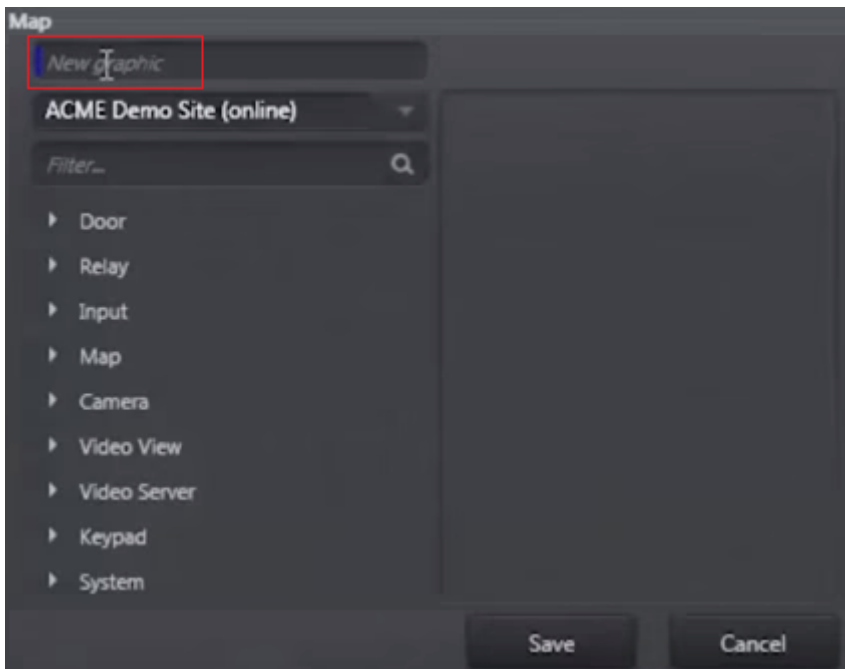
1. Navigate to the *Operation* menu and select *Map*



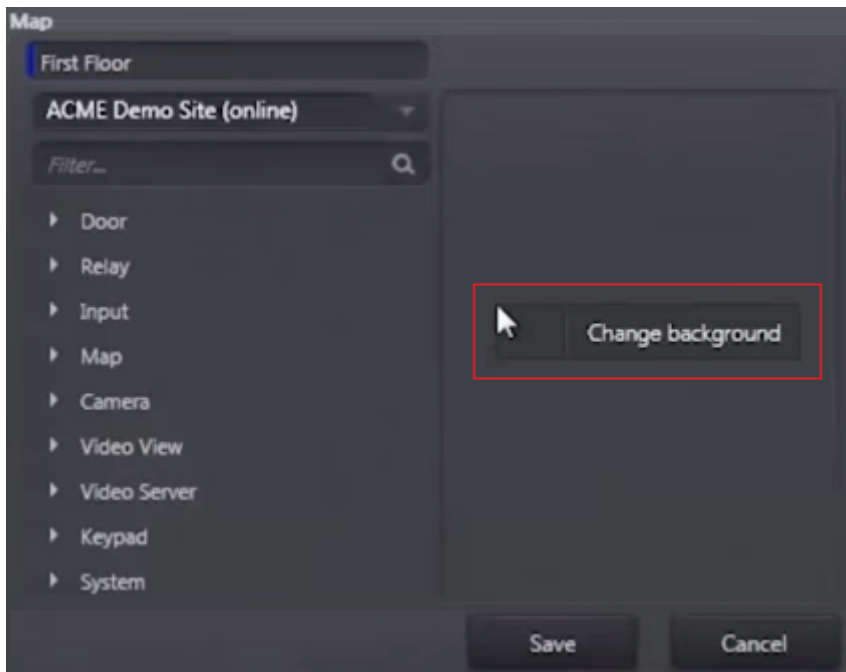
2. Click *Add* button.



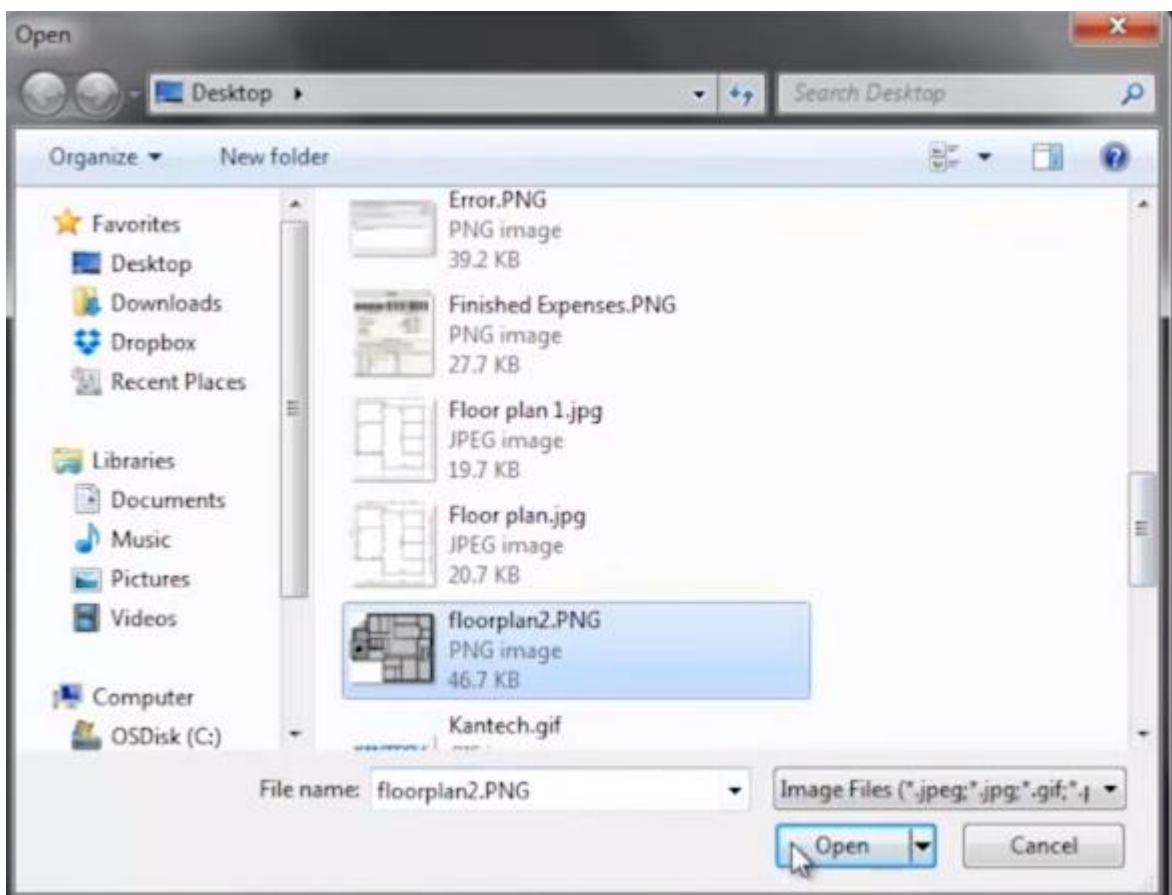
3. Give the new map a name.



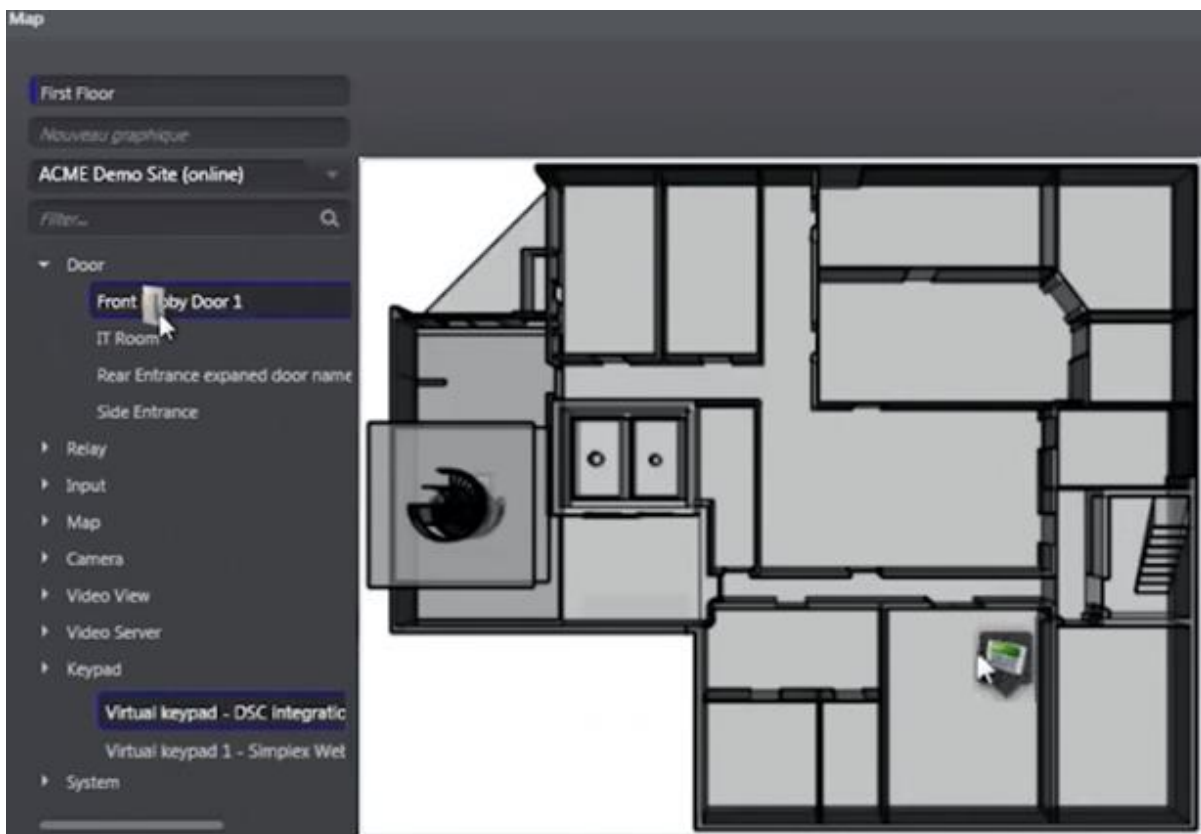
4. Click in box on left side and select *Change Background* to add a graphic for new map.



5. Choose desired graphic for new map.



6. Add components by clicking and dragging them over the graphic.
You can also add components to a previously configured *Video View* instead of a graphic.



7. A new map has been created.
To interact visually with any system component right click its icon.

exacqVision Support Portal

