

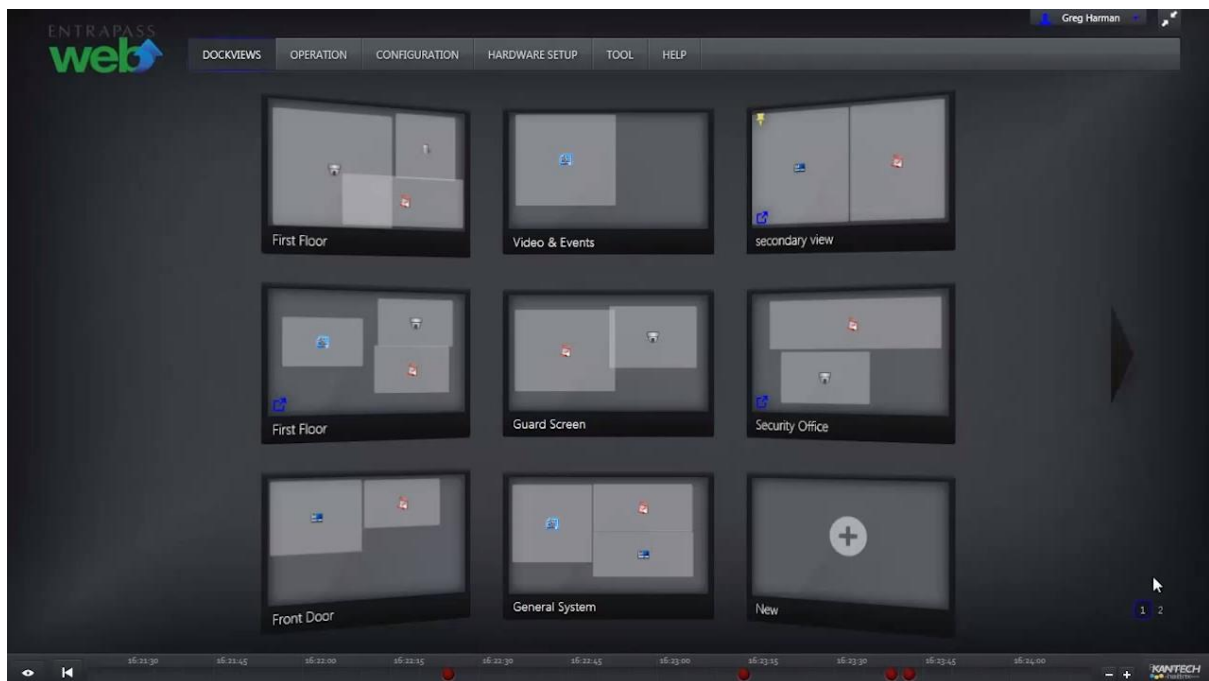
## Create a Dockview in Entrapass Web

### Description

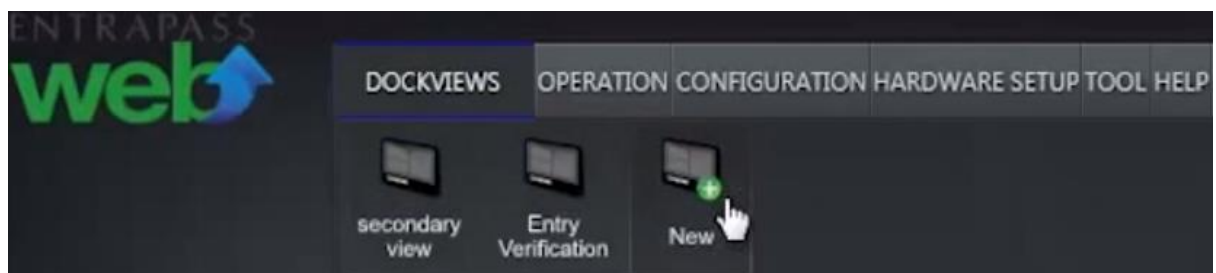
A dockview creates customizable screens to monitor components and events important to a user.

It can be displayed on another monitor or shared with other users.

### Entrapass Web



1. Navigate to the *Dockviews* menu and select *New*.

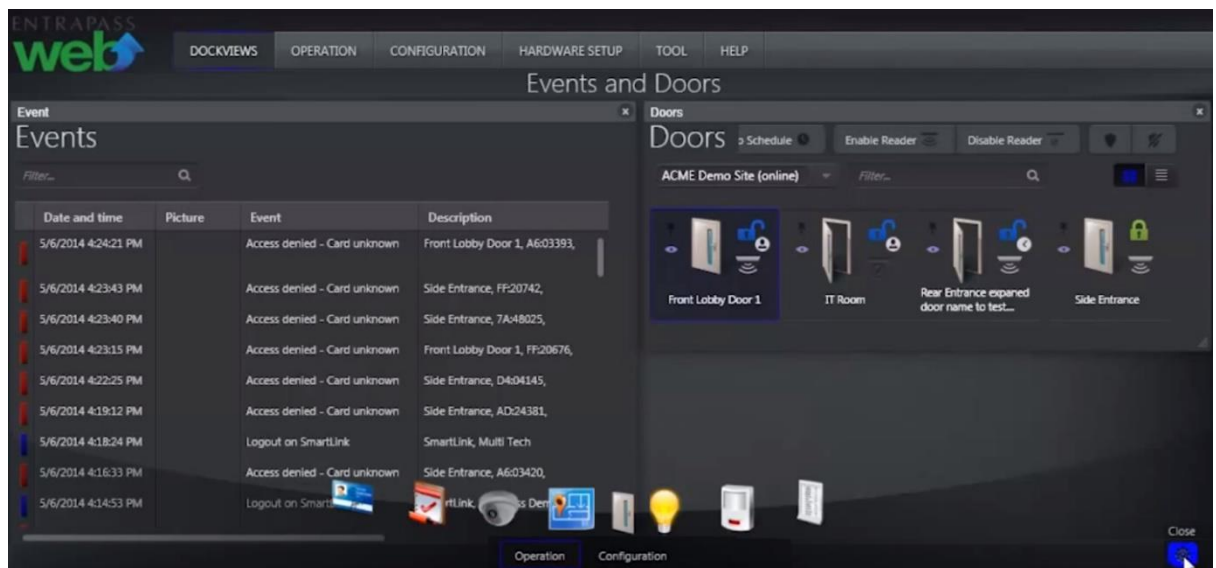


2. Give the new dockview a name and customize desired components and events on screen.

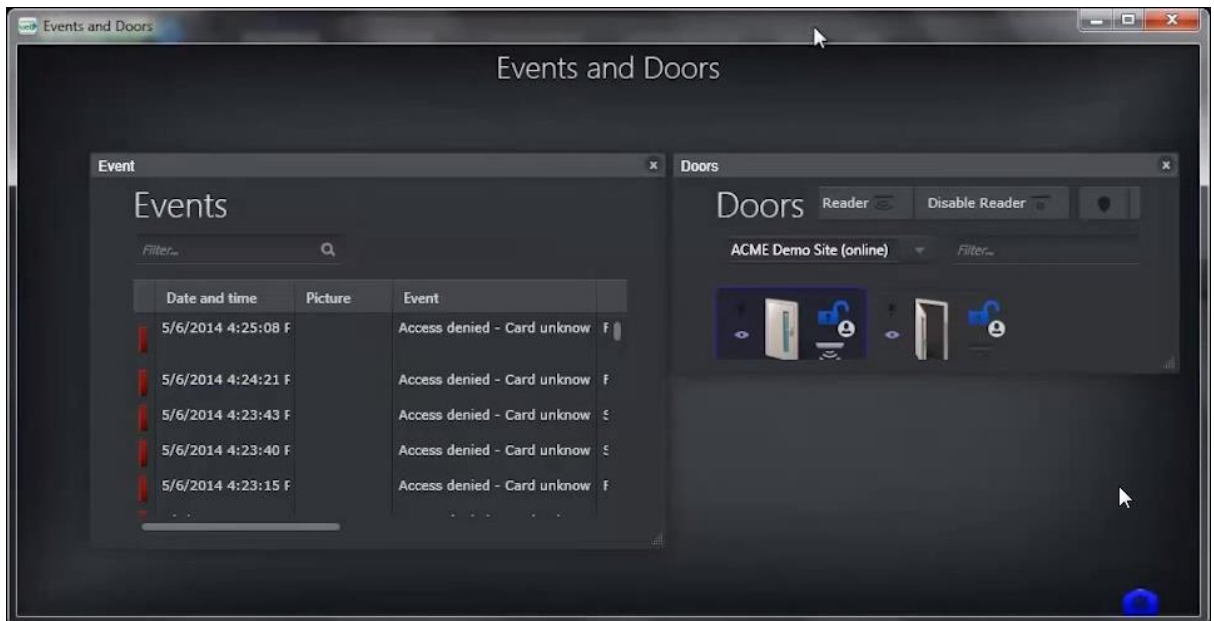
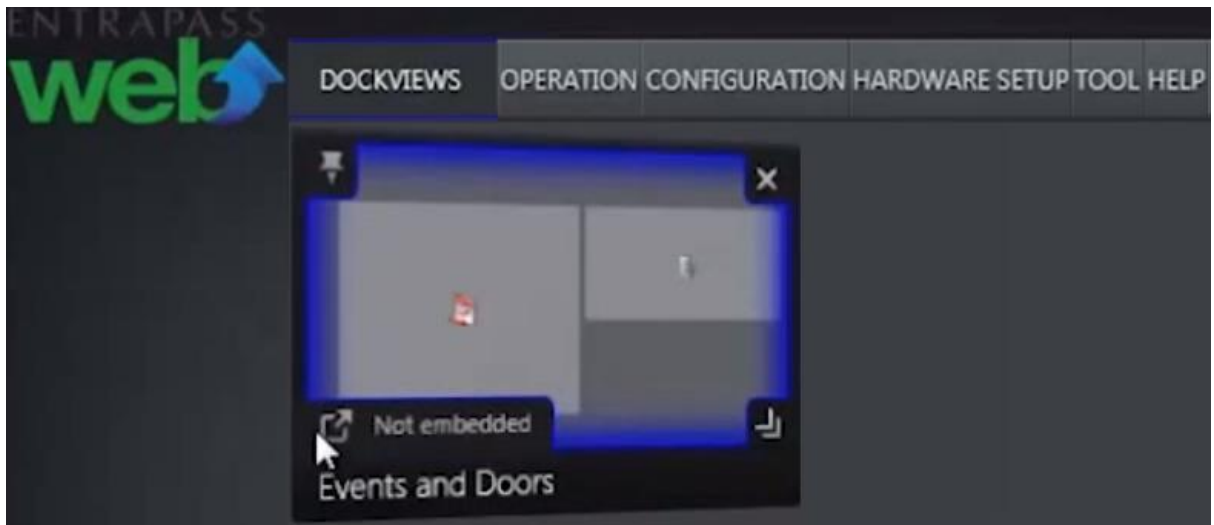
# exacqVision Support Portal



3. Click *Close* to create the new customized screen of components and events.



4. Click *Not Embedded* to move the dockview to another monitor. Then drag and drop the popup box to the second monitor.



5. Click *Assign To* for sharing the dockview with other users.

# exacqVision Support Portal

