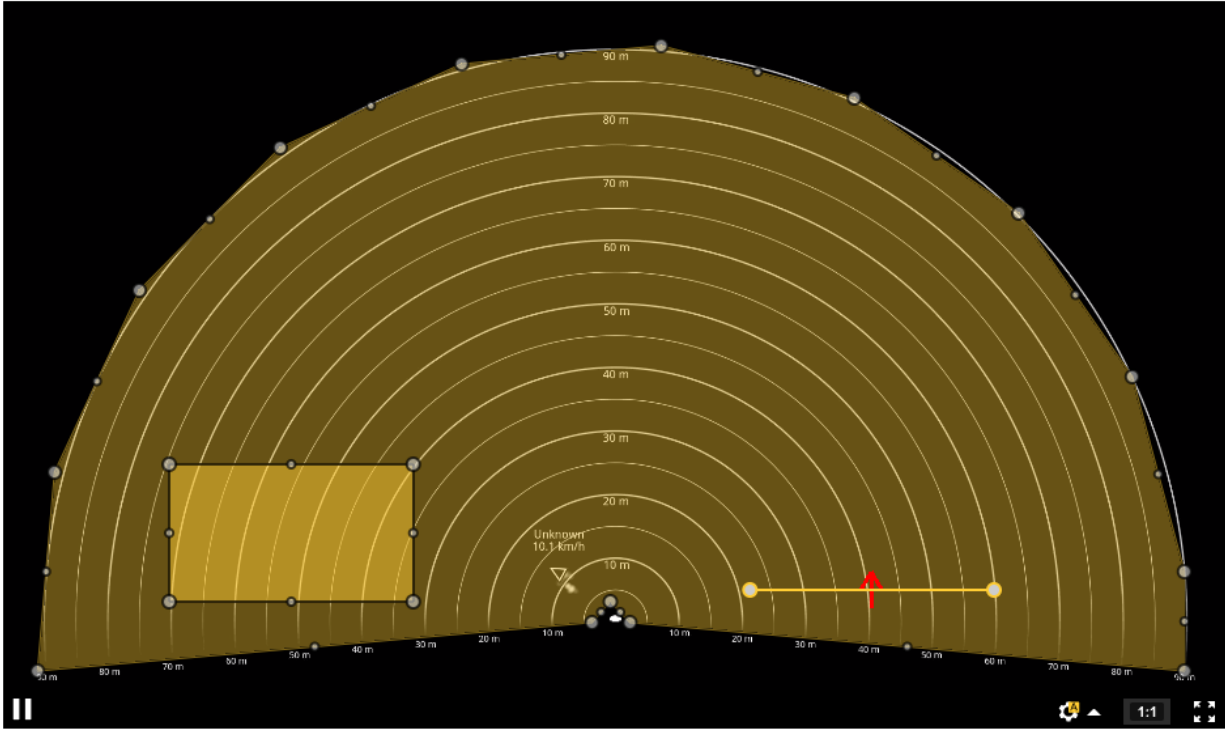


Axis D2110-VE Radar



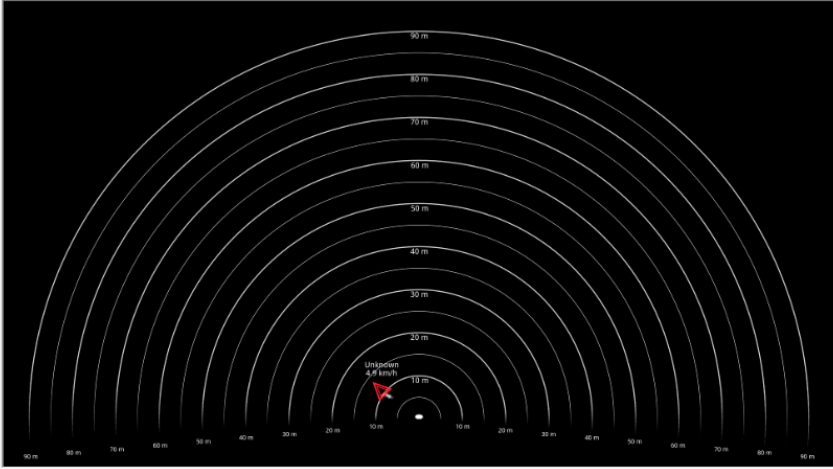
Radars RMD zones Stream Overlay Apps System

East Lot Crossline 2 Entrance

+

Three “RMD” zones are created. Each zone can be given a name.

Parking Lot Radar Settings



AXIS VAPIX D2110-VE

IP Address: [172.19.232.195](#)

MAC Address: AC-CC-8E-BF-F9-8A

Firmware: 10.8.1

Resolution: [1920x1080](#)

Image Rate: [30 fps](#)

Avg Image Size: 148009 Bytes

Recording Mode: Continuous Recording

Connection Status: Connected

Last Motion Time: 12/13/2021 6:34:39 AM

Multistreaming

Context 1 Add Stream

Display | Video | Recording | Motion | Suspect Tracking | Mechanical PTZ | Digital PTZ / Fisheye | Schedule | Restricted View

Name:

+ Description v

[Configure Associations](#)

Position: None

Name Time Timezone Date

Font: Arial Size: 10

Font Effects: Yellow Bold

Background: Enable: Color: Opacity:

OSD Template

The radar device can be connected to an exacq server. Exacq treats the device as a “camera”, and it is as far as exacq is concerned since there is a RTSP video stream being provided by the device. The video include the radar detection graphics as seen on the webpage.

Note the radar has been renamed “Parking Lot Radar” in this example.

Configuration

Filter

Systems

- Add Systems
- Client
- Indicators
- Event Monitoring
- Groups
- Maps
- Views
- Tours
- Layouts
- Video Walls
- Facial Matching
- Enterprise
- zbx_linux_test
 - Configure System
 - Add IP Cameras
 - Camera Recording
 - Parking Lot Radar
 - Parking Lot Video
 - Audio Inputs/Outputs
 - Trigger Inputs
 - Alarm Outputs
 - RTSP Server
 - Body Worn Cameras
 - Add Security Integrations
 - System Audio
 - Storage
 - Serial Ports
 - Serial Profiles
 - Notifications
 - Auto Export
 - Event Linking
 - Schedule
 - Archiving
 - Associations
 - Users
 - Change Password

Event Linking

Server Actions

Log	Event Type	Event Source	At Least	Action Type	Action Target	Pre Trigger	Post Trigger	Status
<input checked="" type="checkbox"/>	Analytics	Parking Lot Radar - RMD: Any	Immediate	Record Video	Parking Lot Video	0	0	On
<input checked="" type="checkbox"/>	Analytics	Parking Lot Radar - RMD: East Lot	Immediate	Record Video	Parking Lot Video	0	0	On
<input checked="" type="checkbox"/>	Analytics	Parking Lot Radar - RMD: Any	Immediate	Record Video	Parking Lot Radar	0	0	On
<input checked="" type="checkbox"/>	Analytics	Parking Lot Radar - RMD: East Lot	Immediate	Record Video	Parking Lot Radar	0	0	On
<input checked="" type="checkbox"/>	Analytics	Parking Lot Radar - RMD: Any	Immediate	Log Event	N/A	0	0	N/A

Event Type: Analytics

Event Source: Parking Lot Radar - RMD: Any

Action Type: Log Event

Action Target: N/A

Pre Trigger: 0 Seconds

Post Trigger: 0 Seconds

Log Settings

Maximum Days to Keep Logged Events: 30

New Delete Apply Cancel

After the user configures the RMD zones on the device, they must reconnect the device in exacq. Exacq will discover the RMD zones and provide event linking for each zone, including a catch all “Any” zone option.

Note that exacq does not support any configuration of RMD zones in the exacq client. All configuration must be done on the device webpage, and the device needs reconnected for exacq to pick up the changes.

Configuration

Event Linking

Server Actions

Log	Event Type	Event Source	At Least	Action Type	Action Target	Pre Trigger	Post Trigger	Status
<input checked="" type="checkbox"/>	Analytics	Parking Lot Radar - RMD: Any	Immediate	Record Video	Parking Lot Video	0	0	On
<input checked="" type="checkbox"/>	Analytics	Parking Lot Radar - RMD: East Lot	Immediate	Record Video	Parking Lot Video	0	0	On
<input checked="" type="checkbox"/>	Analytics	Parking Lot Radar - RMD: Any	Immediate	Record Video	Parking Lot Radar	0	0	On
<input checked="" type="checkbox"/>	Analytics	Parking Lot Radar - RMD: East Lot	Immediate	Record Video	Parking Lot Radar	0	0	On
<input checked="" type="checkbox"/>	Analytics	Parking Lot Radar - RMD: Any	Immediate	Log Event	N/A	0	0	N/A

Event Type: Analytics

Event Source: Parking Lot Radar - RMD: Any

Action Type: Log Event

Action Target: N/A

Pre Trigger: 0 Seconds

Post Trigger: 0 Seconds

Log Settings: Maximum Days to Keep Logged Events: 30

Buttons: New, Delete, Apply, Cancel

The event linkings created here show a hypothetical example. If the user want's to record the radar image when there is detection, they may do that.

They may also create any other possible event linking as well. For example if there is a true video camera pointed at a certain zone, they can link the RMD zone and that video. If the RMD zone is active and ON, then the video will record, etc etc.

The screenshot displays a video analytics software interface. On the left, a 'Search Events' sidebar shows a tree view of events, including 'streampi (Archive Only)', 'zbh_linux_test', and several 'Parking Lot Radar' events. The main area features a radar view with concentric semi-circular lines representing a 90m range, with a red arrow indicating a detected object at approximately 10m. Below the radar is a search range filter set to '12/13/2021' with a start time of '06:54 AM' and an end time of '07:00 AM'. A timeline at the bottom shows a 'Paused' state and a list of events with red bars indicating their duration. The events listed are:

- Parking Lot Radar - RMD: Any - Analytics
- Parking Lot Radar
- Parking Lot Radar - RMD: East Lot - Analytics
- Parking Lot Radar

The timeline shows a yellow vertical line at 06:54:50, and the events are clustered between 06:54 and 06:58.

Standard exacq analytic event behavior is expected in terms of searching for the events and video.