

Overview

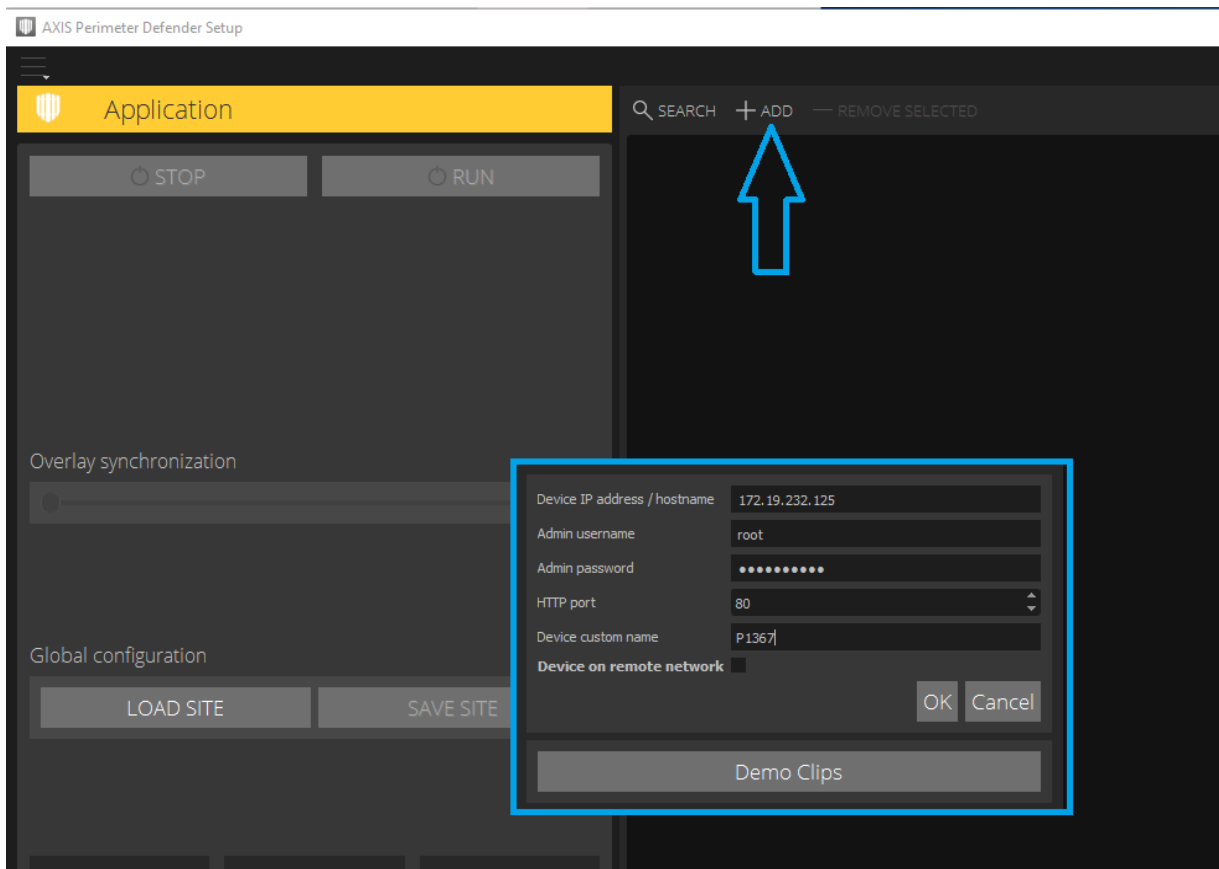
Axis Perimeter Defender is an on-camera perimeter surveillance system. The analytic software is installed on the Axis camera and requires a specific license from Axis. Once configured, it is ideal for monitoring areas where you expect to have little or no traffic, such as fence boundaries or specific areas of prison facilities. The output from Perimeter Defender can be viewed as tracking boxes overlaid on live video, or as serial data to trigger various alarms and events.

Installation Process

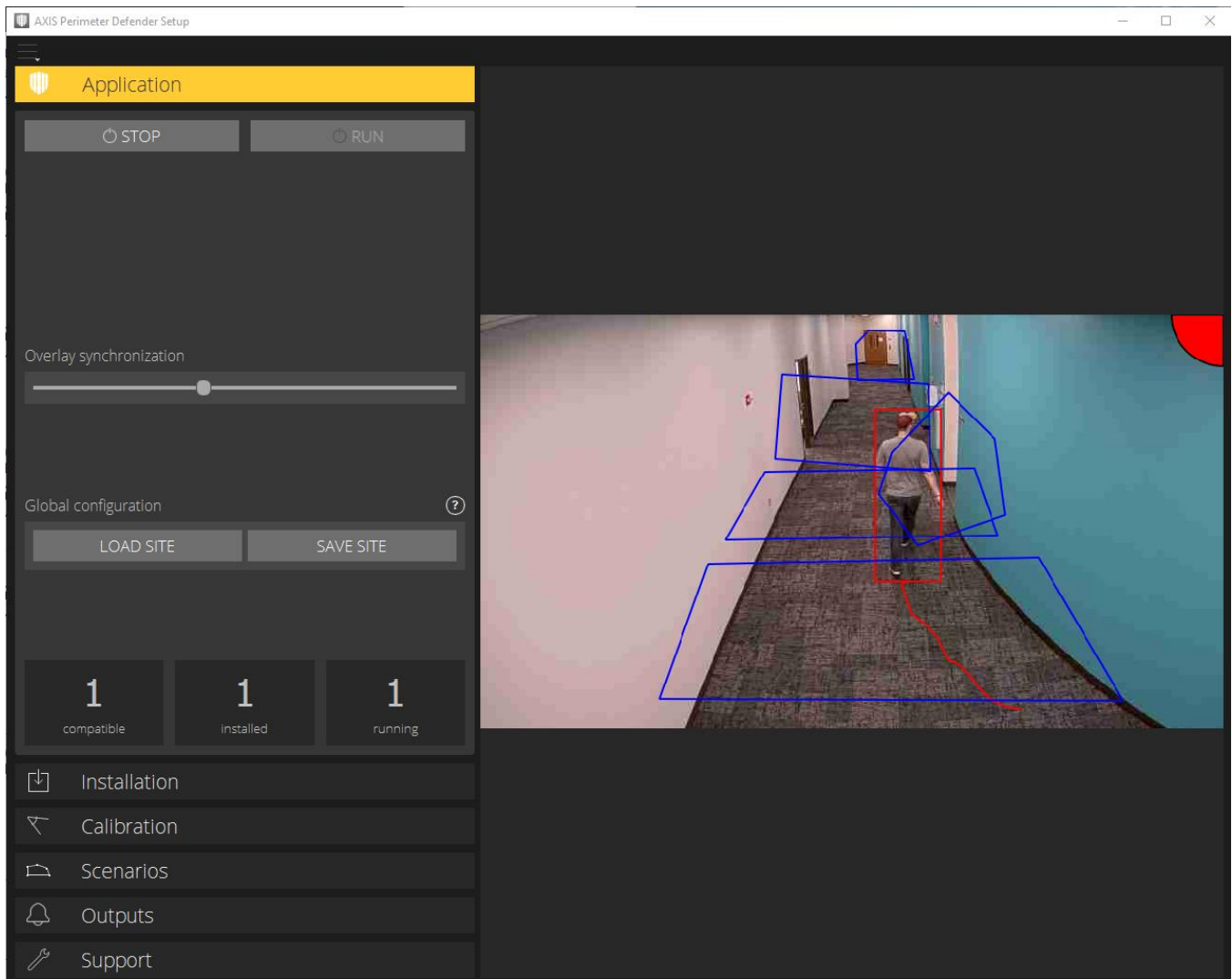
1. Mount the camera correctly. For instructions on proper camera mounting procedure, see the [Axis Perimeter Defender user guide](#). The accuracy of PTZ tours is particularly dependent on correct camera installation.
2. Download the AXIS Perimeter Defender software from axis.com/products/axis-perimeter-defender
3. Install the software on the client computer you will use to configure and monitor Perimeter Defender.

Configuration

1. Open the Axis Perimeter Defender desktop application.
2. Click **Add** to manual add 1 or more cameras. Alternatively, clicking **Search** will automatically scan for cameras on your network.



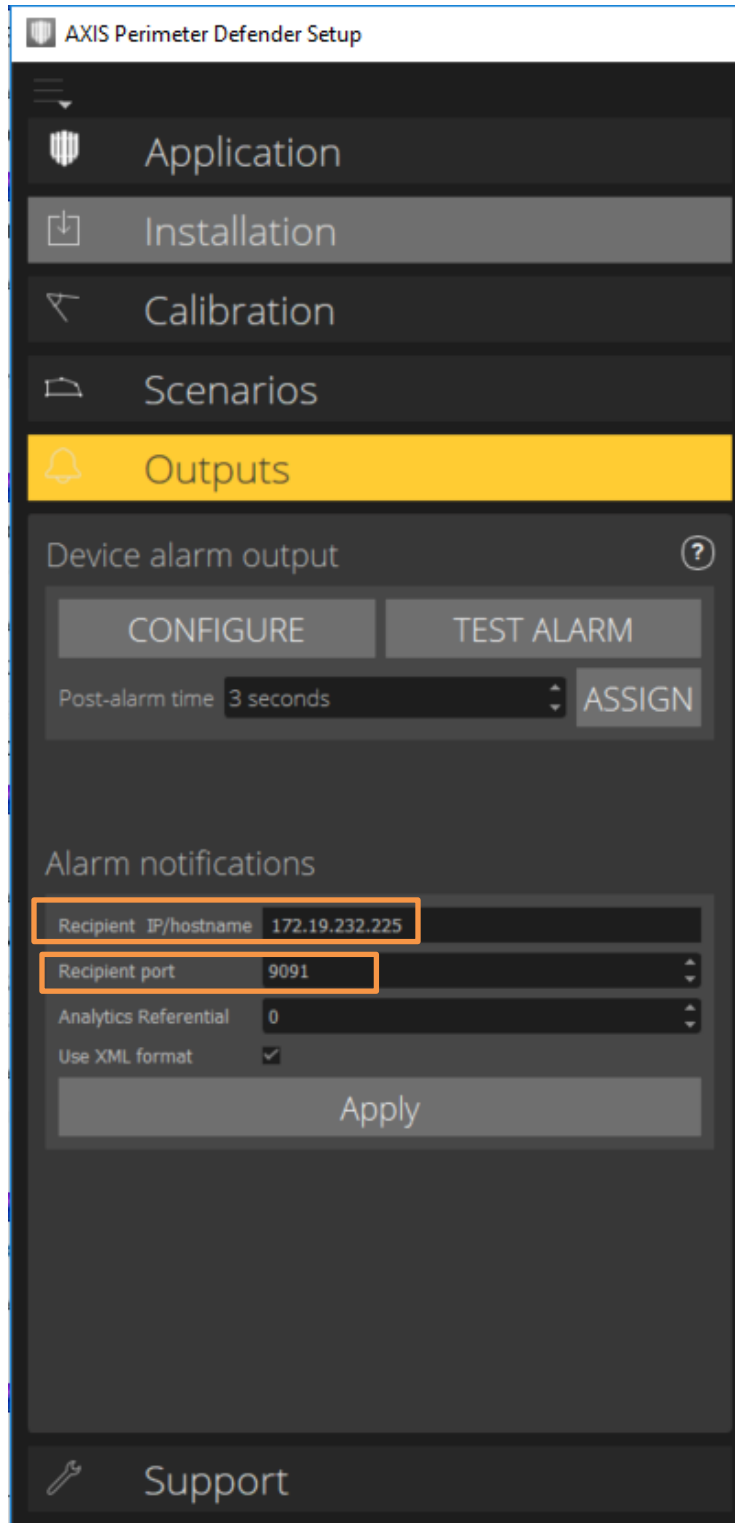
3. Create the desired analytic zones in the software.
 - a. For more details on that process, see the [Online User Manual](#) at Axis.com



Continue to the ExacqVision Configuration section.

Perimeter Defender Output configuration

To send the data from Perimeter Defender to exacqVision as *serial over IP*, go to the **Outputs** section of the Perimeter Defender Setup application. Set the IP address of the ExacqVision Server and choose a port number over which they will communicate.



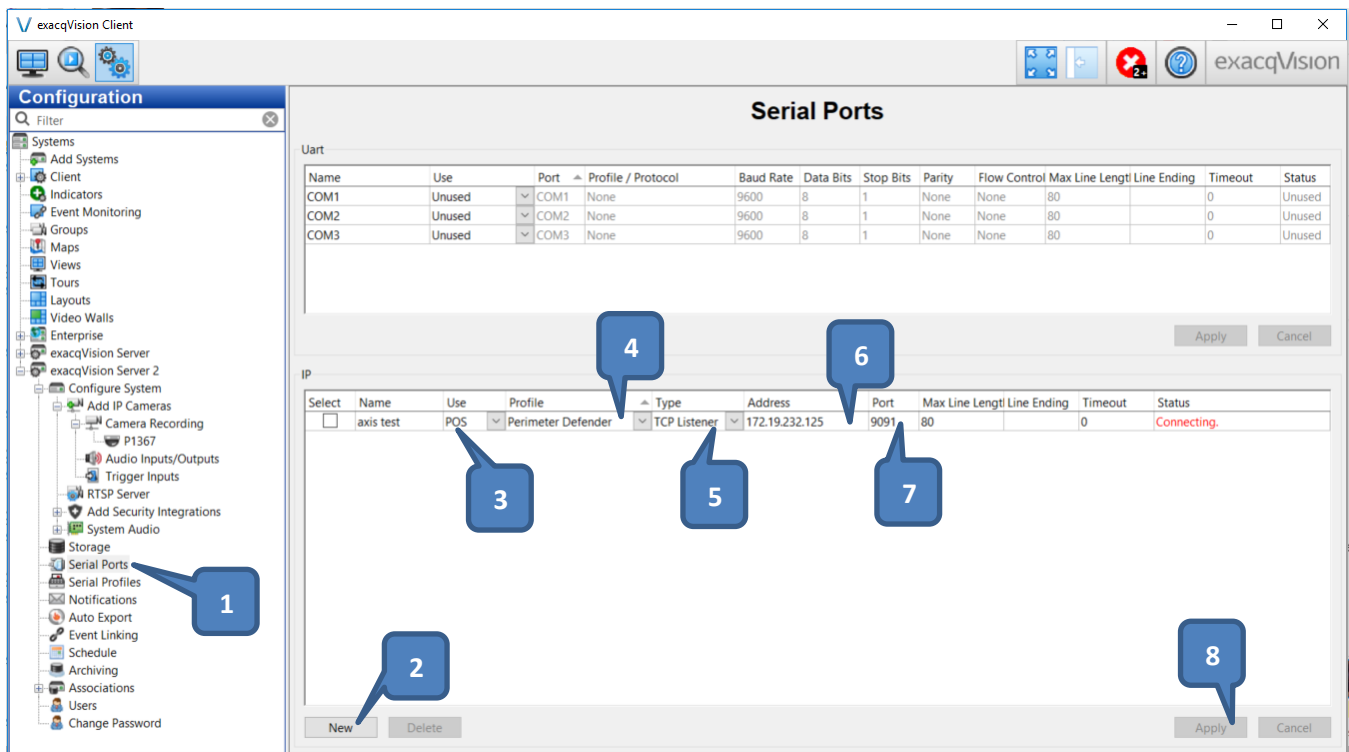
exacqVision Serial Profile Configuration

To create a Serial Profile, navigate to the section of the exacqVision Client shown in the screenshot above.

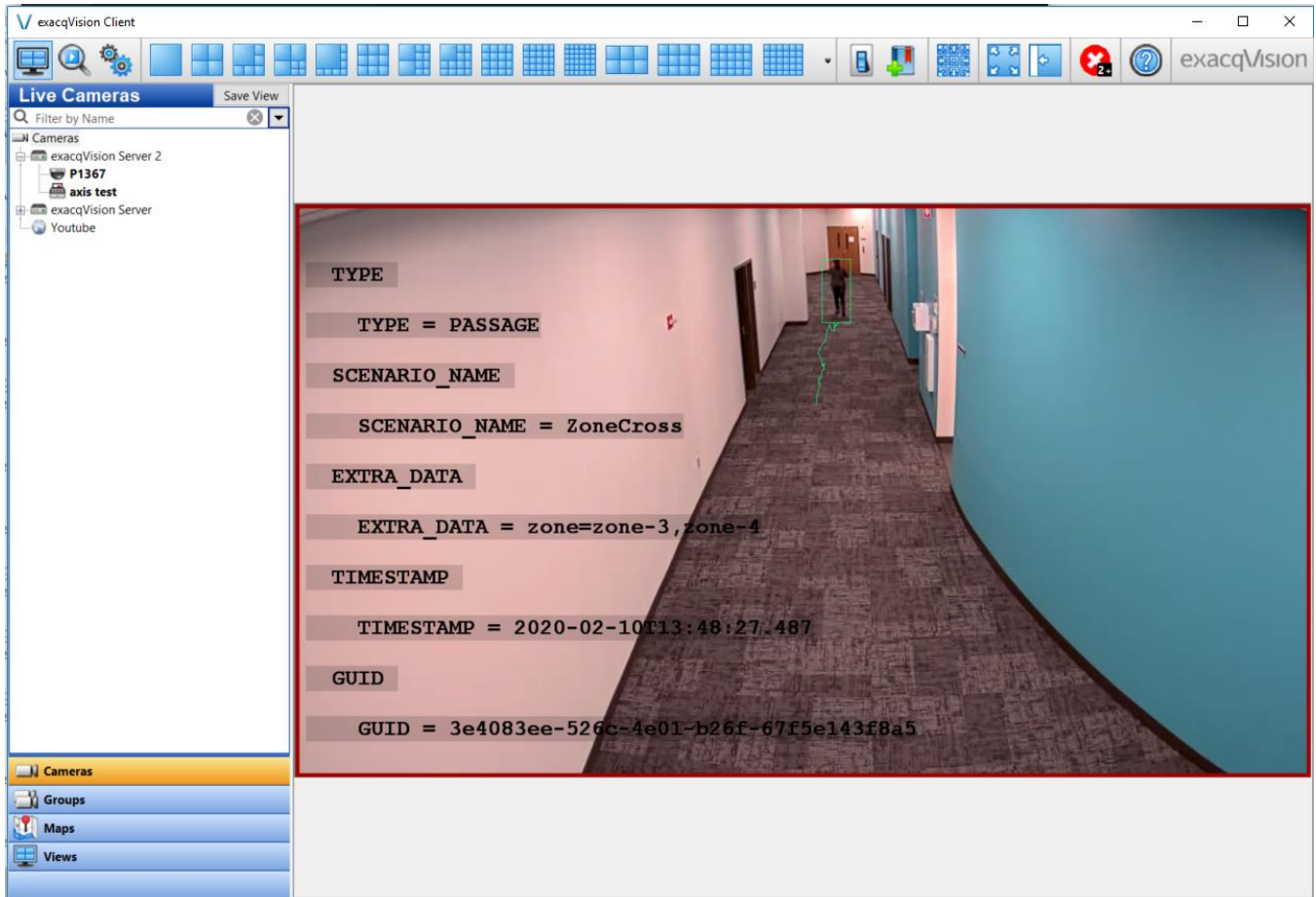
1. Click **New** in the bottom left corner.
2. Create a name for your profile that will be used on the Serial Ports page.
3. Though SOT and EOT can be used here, for this example they are unnecessary.
4. Select **Standard** from the Marker Type section.
5. Click **Apply**

ExacqVision Serial Port Configuration

1. Click on **Serial Ports** in the left navigation tree.
2. Click the **New** button in the bottom left corner, and enter a Name for the Serial Port.
3. Select **POS** from the Use dropdown menu.
4. Select the **Profile created for Perimeter Defender** in the Profile dropdown menu.
5. Select **TCP Listener** from the type dropdown menu.
6. Enter the **IP Address of the Axis Perimeter Defender Camera** in the Address field.
7. Enter the configured **port number** into the Port field. For this example, 9091 was used.
8. Click **Apply**.



The resulting data stream will appear in the Serial Profiles page. It can also be configured as a text overlay when viewing live video.



NOTE: For more information on configuring various aspects of serial data including String Replacement, Line Masking, and Event Keywords, see our [serial data guide](#).

Event Linking

ExacqVision can use the analytic events from Axis Perimeter Defender to trigger various actions.

To configure this:

1. Go to the **Event Linking** section of the exacqVision Configuration page.
2. Select **Analytics** under Event Type.
3. Select the Perimeter Defender licensed camera from the **Event Source** list.
4. Select the desired action from the Action **Type** list.
5. Choose the corresponding camera for that event from the Action **Target** list.
6. Determine your desired **Pre** and **Post** trigger timing.
7. Click **Apply**

Event Linking

Log	Event Type	Event Source	At Least	Action Type	Action Target	Pre Trigger	Post Trigger	Status
<input checked="" type="checkbox"/>	Soft Trigger	Soft Trigger 4	Immediate	Record Video	P1367 - Perimeter Defen...	1	1	Off
<input checked="" type="checkbox"/>	Analytics	P1367 - Perimeter Defender - PerimeterDefender	Immediate	Record Video	P1367 - Perimeter Defen...	0	0	Off
<input checked="" type="checkbox"/>	Soft Trigger	ACM Test Soft Trigger	Immediate	Record Video	P3375	5	5	Off
<input checked="" type="checkbox"/>	Video Moti...	P1367 - Perimeter Defender	Immediate	Output Trigger	Output 1	0	0	Off
<input checked="" type="checkbox"/>	Input Trigger	Input 1	Immediate	Record Video	Q3709-PVE - Right Dem...	0	0	Off
<input checked="" type="checkbox"/>	Analytics	P3375 - Tampering	Immediate	Notify	test	0	0	Off

Event Type

- Video Motion
- Video Loss
- Input Trigger
- Serial Port
- Serial Profile
- Health
- IP Camera Connection
- Soft Trigger
- Time Trigger
- Analytics**
- Source Group
- Outbound Connection
- Security Integration Connection
- Security Integration Alert
- Security Integration Alarm
- Serial Port Connection
- No Recording

Event Source

- P3375 - Tampering
- P3375 - Audio Trigger
- Q3709-PVE - Right Demo Test - Tampering
- Q3709-PVE - Left - Tampering
- Q3709-PVE - Center - Tampering
- P1367 - Perimeter Defender - Tampering
- P1367 - Perimeter Defender - Audio Trigger
- P1367 - Perimeter Defender - PerimeterDefender**

Action Type

- None
- Record Video**
- Record Audio
- Output Trigger
- Notify
- Auto Export
- PTZ Preset
- Security Trigger

Action Target

- P3375
- Q3709-PVE - Right Demo Test
- Q3709-PVE - Left
- Q3709-PVE - Center
- P1367 - Perimeter Defender**

Pre Trigger: 0 Seconds

Post Trigger: 0 Seconds

Log Settings
Maximum Days to Keep Logged Events: 30

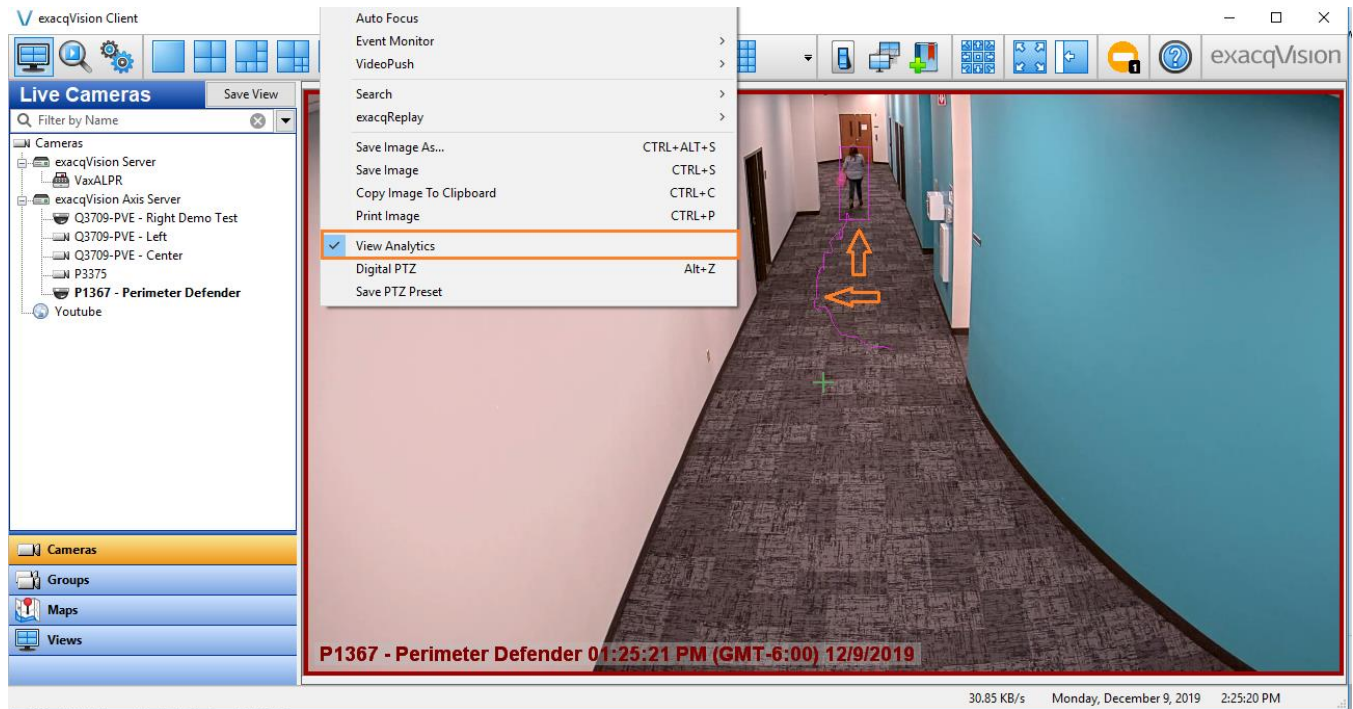
Buttons: New, Delete, **Apply**, Cancel



Live View

To view the bounding boxes and tracking lines for Perimeter Defender in exacqVision’s live view, right click on the video stream and select “View Analytics”.

NOTE: color and line thickness of analytic tracking can be adjusted in the “Analytics” tab of the camera configuration page in exacqVision.



Support Contacts

(Technical Support, Training tools, and more)

ExacqVision

Support Website: <https://exacq.com/support/>

AXIS

Support Website: <https://www.axis.com/learning-and-support>