

## 1 Requirements

The RS2 Access It! Universal integration works with any exacqVision system. This document assumes that the exacqVision client and server and the Access It! Universal client and server are installed and running.

### Software version requirements

- exacqVision Client version: 4.5 or later
- exacqVision Server version: 4.5 or later
- exacqVision license: Professional or greater
- RS2 Access It! Universal version: 3.0.11 or later

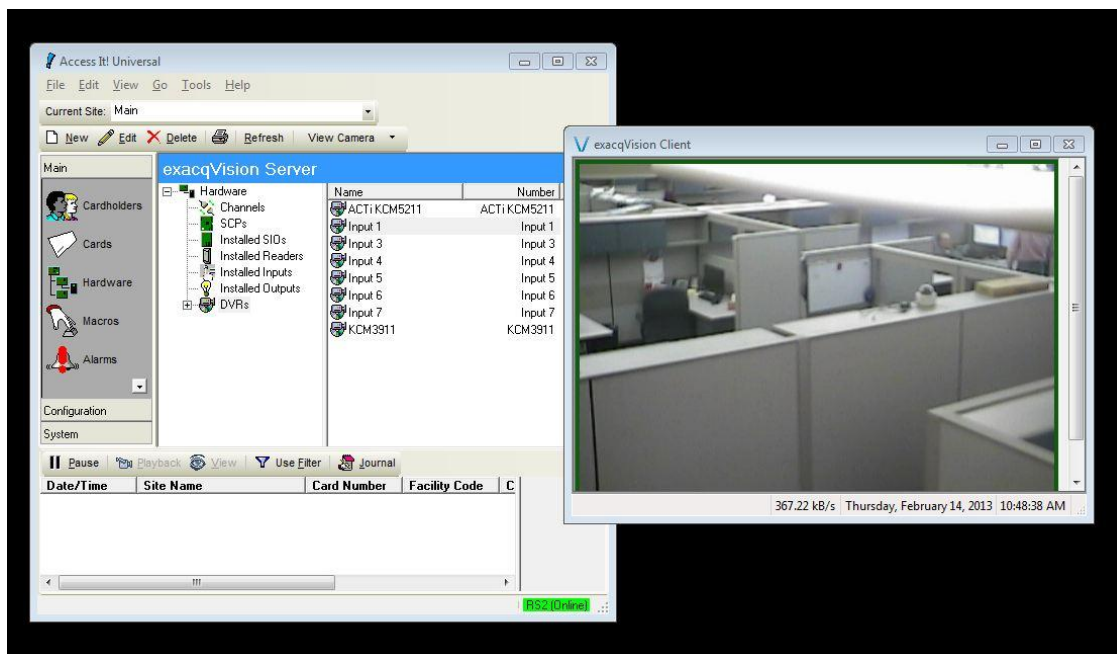
## 2 Installation

1. Download the RS2 exacqVision integration files from [www.RS2tech.com](http://www.RS2tech.com). (If necessary, obtain an account from RS2).
2. Open the “RS2 exacqVision Viewer Integration” document included in the file download.
3. Complete the installation starting with the procedure in “Software Setup” in the RS2 guide.

### NOTES:

- exacqVision client must be installed on the same workstation as the RS2 Access It! Universal client.
- The exacqVision server should have an account for which Access It! Universal will connect.

Here is an example of an integrated exacqVision camera named Input 1.



## 3 Details

### exacqVision's command line interface

**NOTE:** This is included for information purposes only. No user action is required.

When setup.exe is run for the RS2exacqVision integration, a file named evRS2.exe is saved in the exacqVision directory, normally **C:\Program Files(x86)\exacqVision\Client**. When an Access It! Universal user views cameras that have been integrated, evRS2.exe receives parameters from the running Access It! Universal client application and generates the eVCmdLine.xml file that conforms to Exacq's ev-CLI protocol. Then evRS2.exe calls exacqVision's CLI with the eVCmdLine.xml file as its argument. This launches the exacqVision client with the parameters specified in the eVCmdLine.xml file. An example of the command line call is shown here:

```
edvrclient.exe -FeVCmdLine.xml
```

## 4 Troubleshooting

### Account not configured correctly on the exacqVision server

An account should be created on the exacqVision server specifically for the RS2 Access It! Universal client software to log in to. Be sure this account has at least Live+Search permission.

### Connection to an exacqVision Server fails

Be careful not to confuse the exacqVision server username and password with the Windows username and password of the exacqVision server. The username and password that was supplied to Access It! Universal during the integration setup process should be the same credentials used for the account created in the exacqVision server for use with Access It! Universal. Do not use the username and password for the Windows operating system for this purpose.

### Access It! Universal client and exacqVision client need to co-exist

Any workstation with an Access It! Universal client installed must also have exacqVision client installed.