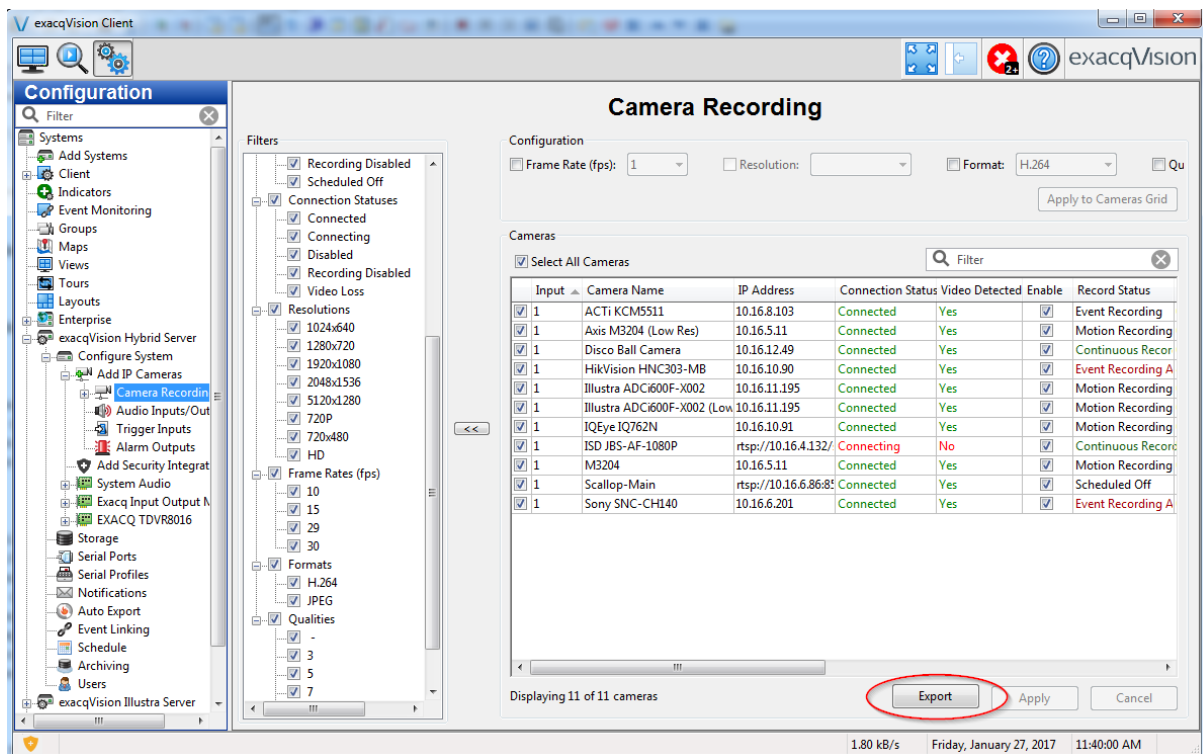


## Exporting an exacqVision Camera List to Excel

Beginning with exacqVision version 7.8, use the 'Export' button on the 'Camera Recording' configuration page.



If using 7.6 or lower, export an exacqVision camera list to Excel by completing the following steps:

1. Highlight the cells that you want to export from the camera list.

# exacqVision Support Portal

## 2. Right-click and select **Copy Selection to Clipboard**.

System Name	Camera Name	IP Address	Connection Status	Enable	Record Status	MAC Address	Type	Model	Firmware	Frame Rate	Resolution	Format	Quality
exacqVision Axis Server	AXIS M1025	10.16.9.100	Connected	<input checked="" type="checkbox"/>	Motion Recording	AC-CC-8E-0C-19-64	AXIS VAPIX	M1025	5.40.5.10	1920x1080	H.264	7	
exacqVision Axis Server	AXIS M3024	10.16.9.97	Connected	<input checked="" type="checkbox"/>	Motion Recording	00-40-8C-08-A2-C9	AXIS VAPIX	M3024	5.40.5.10	1920x1080	H.264	7	
exacqVision Axis Server	AXIS M3027-FHE Platform	10.16.9.97	Connected	<input checked="" type="checkbox"/>	Scheduled Off	00-40-8C-0F-FD-0E	AXIS VAPIX	M3027	5.33.1	1920x1080	H.264	7	
exacqVision Axis Server	AXIS M5014	10.16.9.42	Connected	<input checked="" type="checkbox"/>	Motion Recording	00-40-8C-09-77-85	AXIS VAPIX	M5014	5.30.3	1920x1080	H.264	7	
exacqVision Axis Server	AXIS P1316	10.16.9.36	Connected	<input checked="" type="checkbox"/>	Motion Recording	00-40-8C-00-07-07	AXIS VAPIX	P1316	5.30.3	1920x1080	H.264	7	
exacqVision Axis Server	AXIS P1316 (2)	10.16.9.36	Connected	<input checked="" type="checkbox"/>	Motion Recording	00-40-8C-00-07-07	AXIS VAPIX	P1316	5.30.3	1920x1080	H.264	7	
exacqVision Axis Server	AXIS P1317	10.16.9.143	Connected	<input checked="" type="checkbox"/>	Motion Recording	00-40-8C-05-3E-5A	AXIS VAPIX	P1317	5.40.17	1920x1080	H.264	7	
exacqVision Axis Server	AXIS P1318	10.16.9.84	Connected	<input checked="" type="checkbox"/>	Motion Recording	00-40-8C-05-3E-5A	AXIS VAPIX	P1318	5.40.17	1920x1080	H.264	7	
exacqVision Axis Server	AXIS P1318 (2)	10.16.9.84	Connected	<input checked="" type="checkbox"/>	Motion Recording	00-40-8C-05-3E-5A	AXIS VAPIX	P1318	5.40.17	1920x1080	H.264	7	
exacqVision Axis Server	AXIS P1317	10.16.9.143	Not Connected	<input type="checkbox"/>	Scheduled Off	00-40-8C-05-3E-5A	AXIS VAPIX	P1317	5.30.3	1920x1080	H.264	7	
exacqVision Axis Server	AXIS Q1765-Corridor	10.16.9.8	Connected	<input checked="" type="checkbox"/>	Motion Recording	00-40-8C-84-7B-19	AXIS VAPIX	Q1765	5.30.3	1920x1080	H.264	7	
exacqVision Axis Server	AXIS Q1765-LE-PT	10.16.9.188	Connected	<input checked="" type="checkbox"/>	Motion Recording	AC-CC-8E-0C-03-44	AXIS VAPIX	Q1765-LE-PT	5.33.2	1920x1080	H.264	7	
exacqVision Axis Server	AXIS Q1910	10.16.9.20	Connected	<input checked="" type="checkbox"/>	Scheduled Off	00-40-8C-A5-F8-2E	AXIS VAPIX	Q1910	5.30.2	1920x1080	H.264	7	
exacqVision Axis Server	AXIS Q6043-E	10.16.9.229	Connected	<input checked="" type="checkbox"/>	Motion Recording	00-40-8C-F4-00-A3	AXIS VAPIX	Q6043-E	5.33.1.3	1920x1080	H.264	7	
exacqVision Axis Server	M5014 (Stream 2)	10.16.9.42	Connected	<input checked="" type="checkbox"/>	Motion Recording	00-40-8C-09-77-85	AXIS VAPIX	M5014	5.30.3	1920x1080	H.264	7	
exacqVision Axis Server	Q1765 (Stream 2)	10.16.9.8	Connected	<input checked="" type="checkbox"/>	Motion Recording	00-40-8C-84-7B-19	AXIS VAPIX	Q1765	5.40.17	1920x1080	H.264	7	
exacqVision Axis Server	AD400-DESI	10.16.9.103	Connected	<input checked="" type="checkbox"/>	Motion Recording	00-30-9E-41-43-54	American Dynamics	AD400-DESI	3.06	1920x1080	H.264	7	
exacqVision Linux Server	Analogue - Back Door	-	Connected	<input checked="" type="checkbox"/>	Motion Recording	-	Analogue	Stretch VRC7016LX	7.5.1.69	1920x1080	H.264	8	
exacqVision Linux Server	Analogue - Front Door	-	Connected	<input checked="" type="checkbox"/>	Motion Recording	-	Analogue	Stretch VRC7016LX	7.5.1.69	1920x1080	H.264	8	
exacqVision Linux Server	Analogue - Side Hall	-	Connected	<input checked="" type="checkbox"/>	Motion Recording	-	Analogue	Stretch VRC7016LX	7.5.1.69	1920x1080	H.264	8	
exacqVision Linux Server	Analogue - Vestibule 1	-	Connected	<input checked="" type="checkbox"/>	Motion Recording	-	Analogue	Stretch VRC7016LX	7.5.1.69	1920x1080	H.264	8	
exacqVision Linux Server	Analogue - Vestibule 2	-	Connected	<input checked="" type="checkbox"/>	Motion Recording	-	Analogue	Stretch VRC7016LX	7.5.1.69	1920x1080	H.264	8	
exacqVision Linux Server	Analogue - West Door	-	Connected	<input checked="" type="checkbox"/>	Motion Recording	-	Analogue	Stretch VRC7016LX	7.5.1.69	1920x1080	H.264	8	
exacqVision Linux Server	Analogue - West Windows	-	Connected	<input checked="" type="checkbox"/>	Motion Recording	-	Analogue	Stretch VRC7016LX	7.5.1.69	1920x1080	H.264	8	
exacqVision Linux Server	AXIS M3027-FHE	10.16.9.97	Connected	<input checked="" type="checkbox"/>	Motion Recording	00-40-8C-0F-FD-0E	AXIS VAPIX	M3027-FHE	5.33.1	1920x1080	H.264	7	
exacqVision Linux Server	E-AD40C (1)	10.16.9.103	Connected	<input checked="" type="checkbox"/>	Motion Recording	8C-E7-48-54-01-47	Exacq E-series	E-AD40C	V1.2.0.846	1920x1080	H.264	8	
exacqVision Linux Server	E-AD40C (2)	10.16.9.103	Connected	<input checked="" type="checkbox"/>	Motion Recording	8C-E7-48-54-01-47	Exacq E-series	E-AD40C	V1.2.0.846	1920x1080	H.264	8	
exacqVision Linux Server	E-AD40C (3)	10.16.9.103	Connected	<input checked="" type="checkbox"/>	Motion Recording	8C-E7-48-54-01-47	Exacq E-series	E-AD40C	V1.2.0.846	1920x1080	H.264	8	

## 3. Open Notepad (notepad.exe).

## 4. In Notepad, press **Ctrl+V**. Alternatively, select **Paste** from the **Edit** menu.

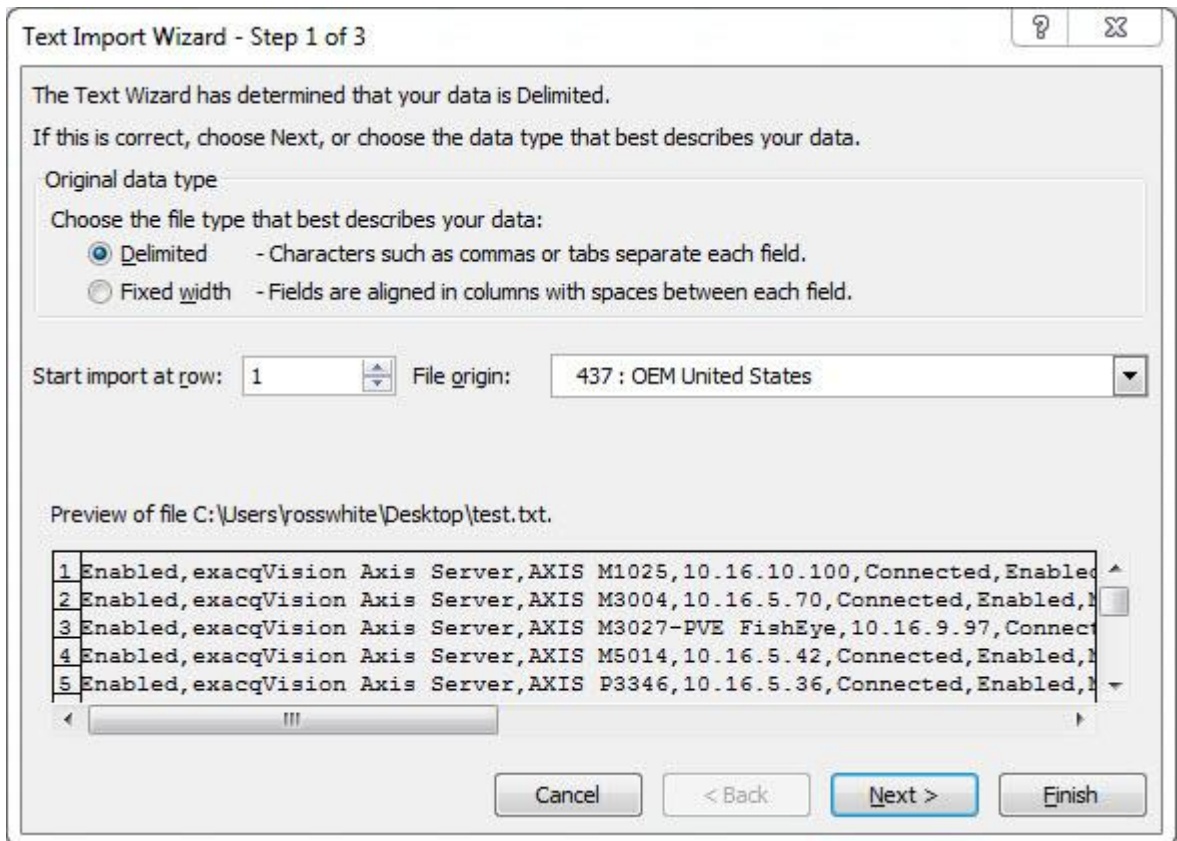


## 5. Save the file as a text file (extension .txt).

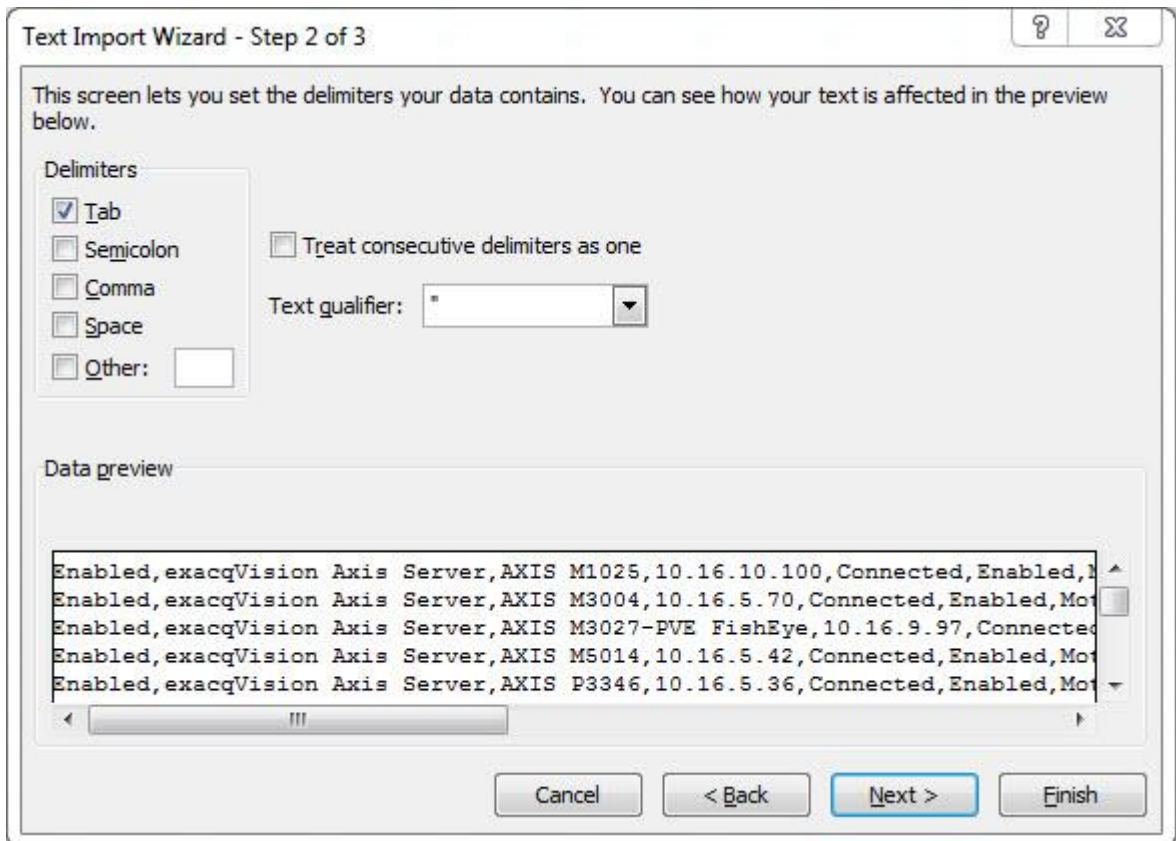
## 6. Open Excel.

## 7. In Excel, select **Open** from the **File** menu.

## 8. Browse to the .txt file you saved from Notepad and open it. The following wizard appears:



9. Select the **Delimited** option and click Next to open the next page of the wizard.



10. Under **Delimiters**, deselect the **Tab** option and select **Comma**.
11. Click **Finish**. The resulting spreadsheet separates all camera information into its associated columns. You can expand, sort, delete, and more using Excel's features.